

Thursday 30 April, 2026

Dates To Remember

TERM TWO 2026

Friday 1st May

SRC Pyjama Day

Friday 1st May

Team Kids - Lunchtime Robotics Club

Tuesday 5th May

Team Kids - Lunchtime Dance

Wednesday 6th May

Mothers Day Stall
Book Club orders DUE

Thursday 7th May

Mothers Day Stall

Friday 8th May

Interschool Sport Day Round 1 - 9am -11am
Year 7 2027 - Placement Applications Due

Friday 8th May

Mothers Day Event Prep, Yr 1 & 2 - 2.30pm

Monday 11th May

Assembly - 2.30pm

Tuesday 12th May

Year 1 Inform and Empower session 2

Wednesday 13th May

Guide Dog Visit (P-2) - 2:30pm
School Council 6pm

Friday 15th May

District Cross Country 9am - 12:30pm

Monday 18th - Friday 22nd May

Open Week - Prep 2027 tours each day
9.30am

SAVE THE DATE

Saturday 20th June

Trivia Night

Principal's Report

PJ DAY - TOMORROW

This is by far my favourite event and unfortunately we have interviews, so I won't be able to make the most of wearing PJs to work! But you all can. This was voted by the students as their Dojo reward for Term 1.

CROSS COUNTRY

We couldn't have picked a better day! Thank you to Mrs Black for organising our cross country event. A shout out to Miss Douglas who ran with the students and to all the parent helpers. A special mention to our school leaders who also assisted by running with younger year levels even though they had completed their own competition.

SCHOOL PHOTOS

It was great to see that all students were in the correct uniform for our photos on Tuesday. Advanced Life had a technical issue which meant that parents were unable to order sibling photos. As such, they will be taking siblings, graduation and special group photos on Tuesday the 12th of May.

ANZAC DAY

Our School Captains shared an overview of Anzac Day and led the one minute silence. The silence is a solemn, sacred pause for reflection, respect, and remembrance of those who have died or suffered in all wars, conflicts, and peace operations.



9807 8120



9888 1921



Facebook.com/MtWaverleyHeightsPS



Mountwaverley.heights.ps@edumail.vic.gov.au



Mountwaverleyheightsps.vic.edu.au

MWHPS BEANIES - Covering Heads, Conquering Cancer - For Elizabeth



Around a third of our students have been taught by Mrs Elizabeth Deylen, either having her as a Prep or Year 1 teacher. However, we realise that we have had a lot of new families join us over the past 18 months who may not know her. As we are donating profits to her from the Beanie sales, I thought I would tell you a little about Elizabeth and why she means so much to the staff and community.

Elizabeth joined our school in 2018, having worked previously in a special school setting. Over the past 8 years that she has been at MWHPS Elizabeth has been a rock star of a teacher and leader. Her knowledge on how students learn and her ability to support and grow others is phenomenal. Students love her because she is fair, kind and gives her time to truly listen and understand their perspective. Staff love her because she is non judgmental, direct, kind and supportive. Over the past 4 years, Elizabeth moved into a Learning Specialist role, where we were able to utilise her strengths. She has led a range of initiatives at the school but has been instrumental in leading wellbeing.

Last year at the age of 34 and with a one year old at home, Elizabeth was diagnosed with cancer. Chemotherapy began quickly, and in true Elizabeth fashion, she has continued to show incredible strength — even returning to work two days a week between treatments. Never one to complain, she has quietly shown us just how real and relentless this fight is. How she continues to show up is nothing short of extraordinary.

All profits from our Beanie sales will go towards Elizabeth's Go Fund Me Page. We want to wrap our arms around Elizabeth and her family in the same way she has always wrapped her arms around others — with care, generosity and unwavering support. The reality is that while she focuses on fighting this illness, the financial pressures of everyday life do not pause. Medical expenses, reduced capacity to work, and the ongoing costs of raising a young family can quickly become overwhelming. Once we have the details of the Go Fund Me Page, we are encouraging families to post/share this fund in your social media accounts. We know the generosity of Victorians, and hope to assist the family beyond our initial fundraiser.



Our School Captains chose the Beanie Pun - 'Covering Heads Conquering Cancer - for Elizabeth' and have a range of small actions that will be undertaken over the upcoming months.

Thank you to everyone who has already purchased a beanie. We are starting to process orders tomorrow!. **Don't forget to please write your child's name on your beanie!**



9807 8120



9888 1921



Facebook.com/MtWaverleyHeightsPS



Mountwaverley.heights.ps@edumail.vic.gov.au



Mountwaverleyheightsps.vic.edu.au

ENROLMENTS PREP 2027

Enrolments for Prep 2027 are now open. If you have a younger sibling who is due to start school next year, we ask that you submit an enrolment form. Enrolments for 2027 can be done either via paper or online.

If you also know of any families in our zone who have children starting school, please encourage them to submit an enrolment form.

We will be holding an Open week, with tours each morning, from Monday 18th May - Friday 22nd May. If you know of any families who would like to arrange a tour, please get them to contact the office.

To register online please use the following link - <https://students.educationapps.vic.gov.au/s/>

Please speak with Louise or Julie in the office if you have any questions or would like a paper form.

LATE ARRIVALS

We understand that sometimes things happen and children can arrive late for school. If your child arrives after 9am, please make sure that you come to the office to sign them in. Most classes take the roll as soon as students enter the classroom, so even if it is only 5 minutes they need to head to the office. Otherwise you will receive a notification that your child is absent.

PRINCIPAL CONFERENCE

Next week from Wednesday to Friday Carolyn and I will be attending our network conference. Should you have any issues please contact Emma Thomas who will be acting Principal in our absence.

Let's celebrate...

- The following classes who had all students arrive to school on time, last week: All Preps, 1S, 2J, 2M, 3K, 4S, 4C, Year 5's and Year 6's
- The incredible help from the House and School Captains for their amazing efforts helping the students on the cross country day
- All students who participated in Cross Country. Congratulations to all those that placed in the top 10. Well done!

Sharon Reiss-Stone

Principal



9807 8120



9888 1921



Facebook.com/MtWaverleyHeightsPS



Mountwaverley.heights.ps@edumail.vic.gov.au



Mountwaverleyheightsps.vic.edu.au

Assistant Principal's Report

CAR PARK

We've noticed that the car park has been quite busy over the past few weeks. As we do in the classroom, we felt it was a good time to revisit our expectations—particularly with the start of the new term.

CAR PARK RULES

All parents have the same goal – to get their child(ren) to and from school safely and on time. We need to be courteous to our fellow parents, maintaining our school values and leading by example to our child(ren).

Be Responsible – Be Respectful – Be Inclusive

Rules to Observe:

- **5km limit** within school grounds
- 40km limit along Solomon St directly outside school
- Car Park is directional. Arrows indicate the direction that traffic flows. Please observe the car park directions, following the arrows and the entry signs that apply
- Drop off/Pick up zones: Please respect each parent's need to do so and patiently wait until they move on. At the same time, "drop off" and "pick up" should be a limited time task, not taking more than a few minutes (any time longer would require parking). If your child is not ready for collection then you will need to loop back around or park
- Wait till you get to the drop off bay before allowing your children to exit the car
- Keep clear zone - clear!
- Do not park where there are no parking bays
- Parents are not to drive down the road alongside the building from Solomon St entrance, unless you need the disabled parking bay. Due to staff numbers increasing, there are no free spaces for parking.
- The gate to the **Staff Parking area** is **closed between 8.45-9am and 3.30 and 3.45pm**. This allows for children to safely walk to and from the school grounds. Only staff are to open and close these gates
- Solomon St entrance - P - Year 2 and parents of children in Years 3-6 who wish to drop their child off via the Solomon St entrance must park in the surrounding streets

We ask everyone to use the car park respectfully and considerately. Please be patient, follow signage, and show courtesy to other drivers, pedestrians, and staff. If you begin to feel frustrated or upset, we encourage you to pause, take a moment, and, if needed, park safely and walk for a short time before continuing. Keeping a calm and respectful approach helps ensure the car park remains a safe space for everyone.

Carolyn Datson

Assistant Principal



9807 8120



9888 1921



Facebook.com/MtWaverleyHeightsPS



Mountwaverley.heights.ps@edumail.vic.gov.au



Mountwaverleyheightsps.vic.edu.au

Mothers Day Prep, Year 1 and Year 2

Last week our Prep, Year 1 and Year 2 families were invited to our Mothers Day event on Friday 8th May.

Please RSVP by **Friday 1st of May** by completing the Google Form for catering purposes:

[Mother's Day Afternoon Tea RSVP Form](#)



JOIN US FOR OUR...

Mother's Day Afternoon Tea

2:35PM - PERFORMANCE IN PAC

2:45PM - 'WHY WE LOVE OUR MUMS' (IN CLASSROOMS)

2:55PM - 'YOU & ME' ACTIVITY

3:20PM - THANK YOU & MUFFINS

3:30PM - STUDENTS DISMISSED FROM CLASSROOMS

Friday 8th May 2026



9807 8120



9888 1921



Facebook.com/MtWaverleyHeightsPS



Mountwaverley.heights.ps@edumail.vic.gov.au



Mountwaverleyheightsps.vic.edu.au

SRC News

SRC EVENTS Term 2



Whole School Dojo Reward = PJ Day

Tomorrow Fri 1st May

Event 1: Education Week

Week 5: Friday 22nd May

Dress up as Future Career/Job

This day is a fundraiser for the EDGE & State School who provide education and uniforms to students.



Event 2: Guide Dog Day Visits

Week 4: Wed 13th May (P- 2)

Week 7: Wed 3rd June (3-6)

Event 3: SRC Superhero Day

Week 8: Friday 12th June

Activities/dress up: Dress up as one of our Resilient

Project superheroes:

- Mindfulness (Purple)
- Gratitude (Orange)
- Emotional Literacy (Red)
- Empathy (Green).



OR wear an accessory of a super hero (cape, mask, t-shirt, badge)



Term 2 Lunch time:

Staff vs Students (Yr 3/4) - Trivia

WHEN: TBC



9807 8120



9888 1921



Facebook.com/MtWaverleyHeightsPS



Mountwaverley.heights.ps@edumail.vic.gov.au



Mountwaverleyheightsps.vic.edu.au

Sustainability News



pumpkin stall

Tuesday 5th May
3:00pm to 3:45pm

**PRODUCE DONATIONS
ARE WELCOME!**

To donate leave them at the office during the week, to be sold at the stall.



9807 8120



9888 1921



Facebook.com/MtWaverleyHeightsPS



Mountwaverley.heights.ps@edumail.vic.gov.au



Mountwaverleyheightsps.vic.edu.au

PE News

Whole School House Cross Country

Congratulations to all the students who participated in the Whole School Cross Country Event last Friday 24th April. The weather was amazing and students were all out to try their best. A huge thank you to the parents who came along to assist on the day. A massive thank you to Jemma Douglas who was our 'rabbit' for the older students, she ran over 5km on the day to ensure that the students knew where to run! Below are the results from the day with the top 10 students in each age group/ year level listed as well as some photos from the day.

Prep Girls	Prep Boys
1st - Tiana PD 2nd - Abigail PT 3rd - April PT 4th - Hayley PT 5th - Maya PD 6th - Bailey PD 7th - Libby PD 8th - Aria PM 9th - Brooklyn PR 10th - Etta PM	1st - Liam W PD 2nd - Christian PR 3rd - Oliver PD 4th - Max PD 5th - Liam T PR 6th - Kieren PT 7th - Rishiv PR 8th - Nirvaan PT 9th - Vincent PR 10th - Verneth PM
Grade 1 Girls	Grade 1 Boys
1st - Natalia 1S 2nd - Macie 1M 3rd - Stella 1S 4th - Ayla 1S 5th - Aarya 1G 6th - Olivia 1M 7th - Danna 1M 8th - Hazel 1G 9th - Sophie 1M 10th - Emma 1M	1st - Theo 1G 2nd - Rhys 1G 3rd - Natanel 1M 4th - Petar 1G 5th - Achilleios 1M 6th - Josef 1G 7th - Zac 1S 8th - Emerson 1M 9th - Cody 1G 10th - Charles 1S
Grade 2 Girls	Grade 2 Boys
1st - Kayla C 2F 2nd - Aaliyah 2J 3rd - Isla A 2M 4th - Tara D 2F 5th - Rosie L 2J 6th - Lara S 2F 7th - Kira D 2F 8th - Adelaide 2M 9th - Milana 2M 10th - Nina 2F	1st - Tyson 2M 2nd - Oliver 2J 3rd - Sajan 2M 4th - Kabeer 2J 5th - Migo 2M 6th - Prish 2M 7th - Quentin 2J 8th - Ajay 2J 9th - Sam K 2M 10th - Dayne 2F



8/9 Year Old Girls	8/9 Year Old Boys
1st - Charlotte O 3A 2nd - Alia 3K 3rd - Aurelia 3M 4th - Emily 3K 5th - Diya 3A 6th - Selina 3A 7th - Angelina 3M 8th - Zoe B 3K 9th - Hayley 3K 10th - Alexandra 3K	1st - Miller 3M 2nd - Wesley 3M 3rd - Matteo 3A 4th - Owen 3K 5th - Xiabu 3A 6th - Dyattan 3M 7th - Naif 3A 8th - Jun 3A 9th - Christopher 3A 10th - Ezel 3M
10 Year Old Girls	10 Year Old Boys
1st - Veera 5M 2nd - Amberley 5M 3rd - Harper 4C 4th - Adithi 4S 5th - Arielle 4S 6th - Christina 5J 7th - Piper 4C 8th - Jacque 5J 9th - Zara 4M 10th - Allegra 4S	1st - Freddy 4C 2nd - Charlie 4S 3rd - Ari 4M 4th - Carter 4S 5th - Slater 4S 6th - Quentin 4M 7th - Jax 4C 8th - Eko 4C 9th - Reyaansh 4C 10th - Sho 4S
11 Year Old Girls	11 Year Old Boys
1st - Taliya 5M 2nd - Dasha 5J 3rd - Ivy 5J 4th - Alefiyah 6D 5th - Jennifer 5D 6th - Arya 6DT 7th - Mira 6G 8th - Samantha 5M 9th - Scarlett 6D 10th - Celine 5D	1st - Orian 6D 2nd - Harry 5D 3rd - Harrison 5J 4th - Guranjas 5M 5th - Emad 5J 6th - David 5M 7th - Oliver 5D 8th - Beau S 5D 9th - Samuel 6G 10th - Aiden A 5J
12 Year Old Girls	12 Year Old Boys
1st - Samantha 6DT 2nd - Pippa 6G 3rd - Charli 6DT 4th - Jenny 6D 5th - Keren 6D 6th - Lara 6D 7th - Zara 6DT 8th - Angela 6DT 9th - Kimberly 6G 10th - River 6DT	1st - Romeo 6D 2nd - Charlie 6DT 3rd - Siddy 6D 4th - Phoenix 6G 5th - Elijah 6D 6th - Jax 6G 7th - Connor 6D 8th - Viraj 6DT 9th - Felix 6G 10th - Harry 6DT

OVERALL RESULTS FROM THE DAY

4th Place - Opals - 3266 pts
 3rd Place - Dolphins - 3306 pts
 2nd Place - Wallabies - 3415 pts
 1st Place - Kookaburras - 3496 pts

CONGRATULATIONS TO KOOKABURRAS FOR WINNING THIS EVENT!



9807 8120



9888 1921



Facebook.com/MtWaverleyHeightsPS

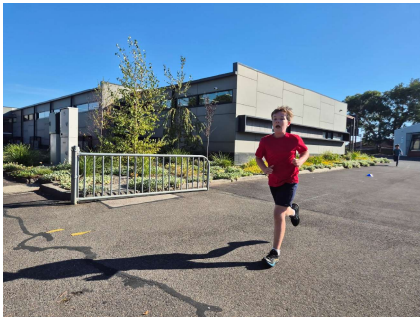


Mountwaverley.heights.ps@edumail.vic.gov.au



Mountwaverleyheightsps.vic.edu.au

Photos from Cross Country



9807 8120



9888 1921



Facebook.com/MtWaverleyHeightsPS



Mountwaverley.heights.ps@edumail.vic.gov.au



Mountwaverleyheightsps.vic.edu.au



Year 6 Weekly Interschool Sports

I am still on the look out for 2 parent helpers for the first two rounds of weekly interschool sport as well as 3 parent helpers for the 3rd round of weekly sport. Please see the dates below.

The first round of weekly sport will be held on Friday 8th May against Syndal South. The second round will be held on Friday 22nd May against Holy Family with the final weekly sport round held on Friday 29th May against Mount Waverley North. We are going to need 3 parent volunteers to help out coaching and supervising/supporting the teams this term as we have more sports that we are participating in. If there are any parents willing to help out for one of the rounds or multiple rounds can you please let me know via Compass. If we are unable to get 3 parents for each week we will be unable to participate, this would be disappointing for the students.

Kate Black

PE Teacher



9807 8120



9888 1921



Facebook.com/MtWaverleyHeightsPS



Mountwaverley.heights.ps@edumail.vic.gov.au



Mountwaverleyheightsps.vic.edu.au

Music News

JUNIOR CHOIR
• TUESDAY 1.40PM

SENIOR CHOIR
• THURSDAY 1.40PM

BAND
• FRIDAY 1.40PM



All Rehearsals
in the
MUSIC ROOM



9807 8120



9888 1921



Facebook.com/MtWaverleyHeightsPS



Mountwaverley.heights.ps@edumail.vic.gov.au



Mountwaverleyheightsps.vic.edu.au

Japanese News

FIRST PRIZE RAFFLE:
More than 40 Prizes

**A pair of return JAL Economy class tickets
MEL to TOKYO**

■ George Kamikawa on Main Stage
■ Free Face Painting ■ Many Performances,
Demonstrations, Food & other Stalls and more!

FREE ENTRY Outside and ...
Children up to 5 years old / Disabled Persons (+1 Carer) /
Pensioners / Persons in Kimono, Yukata or Full Cosplay

Ages 12 & above \$5, Ages 6-11 \$3,
Seniors Card Holders \$3

www.jcv-au.org/japanfestival

Kimono, Cosplay & Etegami Contest

Japan Australia

JAPAN FESTIVAL 結ぐ TSUMUGU Connecting communities, cultures, and the future

JAPAN

Box Hill Town Hall
1022 Whitehorse Rd, Box Hill
SUN 24 MAY 10AM - 5PM **2026 FESTIVAL**

Platinum Sponsor

JAPAN AIRLINES

ASAHI BEVERAGES

JFC

KOBAYASHI

Yakult

(in alphabetical order) MAJOR SPONSORS

Gold Sponsor

AON

Daiwa

Glen Waverley

Gulliver Australia

ISUZU TRUCKS

ITOEN

JANOME

For Earth, For Life
Kubota

LOGISTEED

Lunet

Mitsubishi Australia Ltd.

HITACHI CO.

MUFG

nanoblock

NEC

nesuto DOCKLANDS

OCEANIA SEAFOODS PTY. LTD.
SEAFOOD WHOLESALES

PENINSULA HOT SPRINGS

SUMITOMO FORESTRY

SUZUKI

TOKIOMARINE NICHIDO

TOLL

TOYOTA

ORGANISERS Japanese Chamber of Commerce & Industry Melbourne / Japanese Society of Melbourne
Japan Festival Organising Committee of Japan Club of Victoria Inc. (Reg. No. A003554B)

SUPPORTERS City of Whitehorse / The Japanese Language Speech Contest Victoria Inc.
Victorian Multicultural Commission / The Monash Japanese Club

We support Guide Dogs Victoria.

Parents Association News

Mother's Day Stall - Volunteers Needed!

The Mother's Day Stall will be held next Wednesday and Thursday, giving children the opportunity to shop for something special for Mum or a loved one. Please feel free to supply your own shopping bag, or bags will be available for purchase on the day. We recommend a \$15 spend limit.

As we prepare for our upcoming Mother's Day Stall, we would love the support of parent volunteers.

There are still volunteer spots available on Tuesday afternoon to set up (sneak peek anyone?), as well as throughout the stall on Thursday and Friday. It's always a fun and rewarding experience, so please join in if you're able.

The class schedule is listed below. While we will do our best to follow it, please note that it is subject to change.



[Mothers Day Stall Volunteer Sign Up](#)

Please note that a valid working with children check and 2026 signed code of conduct is required.



Wednesday 6th of May

Class	Time
Prep T and Year 5 Buddies	9:05- 9:30
Prep R and Year 5 Buddies	9:30-9:55
Prep D and Year 5 Buddies	9:55-10:20
Prep M and Year 5 Buddies	10:20-10:45
3K	10:45- 11:05
Recess	
3M	11:30- 11:50
3A	11:50-12:10
6G	12:10-12:30
6D	12:30-12:50
6T	12:50-1:10
2J	1:10-1:30
Lunch	
2M	2:30-2:50
2F	2:50-3:10
4C	3:10-3:30

Thursday 7th May

Class	Time
1G	9:10- 9:30
1M	9:30-9:50
1S	9:50-10:10
4S	10:10-10:30
4M	10:30- 11:00



9807 8120



9888 1921



Facebook.com/MtWaverleyHeightsPS



Mountwaverley.heights.ps@edumail.vic.gov.au



Mountwaverleyheightsps.vic.edu.au

School Beanie – Covering Heads, Conquering Cancer - For Elizabeth

Our school beanies are now available for purchase via the Canteen tab on Compass.

This year, our Year 6 students have proudly created the slogan “Covering Heads, Conquering Cancer - For Elizabeth”. A meaningful message that encourages our community to show support for Mrs Deylan as she undergoes cancer treatment. Funds raised from beanie sales will go directly to Mrs Deylan and her family during this time.

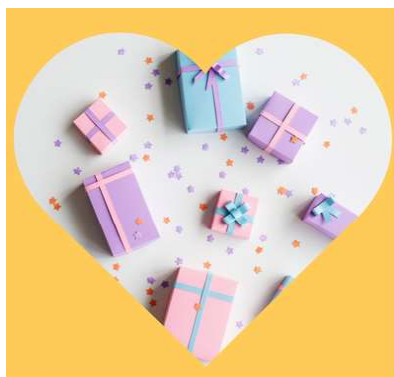
Beanie Public Service Announcement

Beanies will soon be distributed and include a care label inside with space to write your child’s name. **Please ensure your child’s name is clearly written on the beanie before wearing the beanie to school.** With many students wearing the same beanie, naming them will help prevent mix-ups or lost items.



Beanie Details:

- Size: One size fits all
- Price: \$20
- Delivery date: Starting tomorrow!



Parents' Association Key Dates

May

Wed 6	Mother's Day Stall
Thurs 7	Mother's Day Stall

June

Wed 3	2:30 pm - PA Meeting - MWHPS Location to be confirmed
--------------	---

With thanks,

Kerry Tan

PA President

mwhpspa@gmail.com



9807 8120



9888 1921



Facebook.com/MtWaverleyHeightsPS



Mountwaverley.heights.ps@edumail.vic.gov.au



Mountwaverleyheightsps.vic.edu.au

NEW



SCHOOL BEANIES

PRE-ORDER NOW THROUGH COMPASS!!



\$20

We're excited to introduce a winter beanie as a new and ongoing addition to our school uniform.

❤️ **Covering Heads Conquering Cancer - for Elizabeth** ❤️

All proceeds from beanie sales this year will go towards supporting Ms Elizabeth Deylan.

Mount Waverley Heights Primary School
Parents' Association Fundraiser



9807 8120



9888 1921



[Facebook.com/MtWaverleyHeightsPS](https://www.facebook.com/MtWaverleyHeightsPS)



Mountwaverley.heights.ps@edumail.vic.gov.au



[Mountwaverleyheightsps.vic.edu.au](https://www.mountwaverleyheightsps.vic.edu.au)

Team Kids

Mount Waverley Heights P.S NEWSLETTER



WHAT'S BEEN HAPPENING

Week 1 of the BIG skip Challenge saw over 40 students give it a go. Each week the challenge changes along with 3 levels, easy, medium and hard! Students develop persistence & perseverance while also getting out there and active!



IMPORTANT DATES

-  **Term Two Challenge**
The BIG Skip! TK partners w/ Dairy Farmers Aus.
-  **Friday, 8th of May**
Mothers Day 'Grab & Go' Breakfast @ 7-9am
-  **End of Term Two**
Winter Wonderland Party Celebration

TEAMKIDS CLUBS

ASC WEEK: 3



- MONDAY**  
S.T.E.M Club & Group Game
- TUESDAY**  
Cooking & Boardgame
- WEDNESDAY**  
Adventure Club & Epic Games
- THURSDAY**  
Sport & Community Project
- FRIDAY**  
Art Attack Club & Indigenous Game



Service Mobile: 0402 188 077
Office Phone: 1300 035 000

Service Email: MountWaverleyHeightsPS@teamkids.com.au
Office Email: info@teamkids.com.au

Term Two Activities

SCHOOL SOCCER CLASSES

AFTER-SCHOOL SESSIONS



TERM 2 TUESDAYS
3:45-4:45PM



**MT. WAVERLEY HEIGHTS PS,
SCHOOL OVAL**



PREP - GRADE 6

WHAT YOU'LL LEARN:

- Teamwork & Leadership
- Fundamental Soccer Skills
- Fun Games & Drills
- Building Friendships

**SCAN THE QR CODE AND CLICK
"BOOK NOW" TO REGISTER
FOR TERM 2**

**FREE TRIAL
FOR NEW STUDENTS!**



For more info contact socceracademynextgen@gmail.com or visit our website www.nextgensocceracademy.com.au



9807 8120



9888 1921



[Facebook.com/MtWaverleyHeightsPS](https://www.facebook.com/MtWaverleyHeightsPS)



Mountwaverley.heights.ps@edumail.vic.gov.au



Mountwaverleyheightsps.vic.edu.au



ENROL NOW

MUSIC LESSONS

GUITAR ONLINE ENROLMENTS
KEYBOARD CALL 0401951592
SINGING DON'T MISS OUT


www.genesismusicschool.com.au

www.genesismusicschool.com.au

PLEASE FILL OUT AND SUBMIT THE ENROLMENT FORM ON OUR WEBSITE

ONCE WE RECEIVE YOUR DETAILS, WE WILL CONTACT YOU.

IF YOU HAVE ANY QUESTIONS, FEEL FREE TO CONTACT US VIA EMAIL OR PHONE.



info@genesismusicschool.com.au



Basketball Training and Games for Prep, Year 1 & 2 students.

- A great starting point to playing in a team
- Focus on Fun & Skill Development
- Come and Try for FREE!!!
- Only \$50 for the term there after

'PUP PACK' Training
WHEN: TERM 2 - Starts Monday 27th April, 4.15 - 5.00pm
WHERE: Oakleigh Recreation Centre Park Rd, Oakleigh

#jointhepack



REGISTER ONLINE
ashwoodwolves.com.au

We belong

ART COMPETITION 2026

Deaf Children Australia's annual Art Competition supports, promotes, and celebrates the creative pursuits of young deaf and hard of hearing people. This year's theme is 'We belong'.

Submissions open now.

SUBMISSION DEADLINE 22 JUNE 2026

Exhibition in September, details to be announced.

CATEGORIES & ART GRANTS

8 to 11 Years 1st Prize \$500 Runner Up \$250	12 to 17 Years 1st Prize \$700 Runner Up \$300
18 to 23 Years 1st Prize \$1000 Runner Up \$500	Early Education Group Project (0 to 11 Years) 1st Prize \$800 Runner Up \$450

For more info go to:
deafchildrenaustralia.org.au
 or email us with any questions:
events@deafchildren.org.au

Deaf Children Australia.



AMS Music Centre

15 Hamilton Place
Mt Waverley Victoria 3149
Telephone: 03 9888 1433

700 Centre Road
Bentleigh East Victoria 3165
Telephone: 03 9041 7007

Learn Music at AMS Music Centre

AMS Music Centre in Mt Waverley offers high-quality music education for students of all ages and levels.

- With over 56 experienced and qualified teachers, we provide lessons across a wide range of instruments including piano, guitar, vocals and more, in a fun and supportive environment.
- Learning music helps build confidence, creativity and focus, while giving students the opportunity to develop their skills through individual or group lessons, as well as theory, aural and ensemble programs.
- Classes include individual and group lessons, theory, aural training, choir and ensemble programs.

15% DISCOUNT ON TRIAL LESSONS for new students

Please mention this ad to receive your discount.

Please contact us

Call us 03 9888 1433 | Email us info@amsmusiccentre.com.au | Web www.amsmusiccentre.com.au | Visit us 15 Hamilton Place, Mt Waverley VIC 3149

Inspiring a lifelong love of music
EXCELLENCE IN MUSIC EDUCATION

 Mount Waverley Heights Primary

CONTAINER DEPOSIT SCHEME ... HAS ARRIVED!



Zone ID: C200010735

CDS NUMBER