

Thursday 2 April, 2026

Dates To Remember

TERM TWO 2026

Monday 20th April

Term 2 Commences - 9am

Wednesday 22th April

Year 4 Cosmo Dome incursion

Friday 24th April

MWHPS Cross Country 9am - 11am

Monday 27th April

Assembly - 2.30pm

Tuesday 28th April

School Photos

Wednesday 29th April

Year 3 Reptile Encounters Incursion

Wednesday 29th April

Year 6 JMSS Mini Mathematicians 12.30pm

Friday 1st May

SRC Pyjama Day whole school

Wednesday 6th May

Mothers Day Stall

Thursday 9th May

Mothers Day Stall

Friday 8th May

Interschool Sport Day Round 1 - 9am -11am

Mothers Day Event - 2:30pm

Year 7 2027 - Placement Applications Due

Monday 11th May

Assembly 230pm

Principal's Report

AUSSIE OF THE MONTH

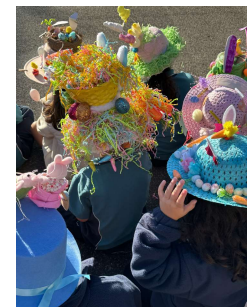
Congratulations to Connor G for being a dedicated upstander within the school community, frequently working to de-escalate conflicts and redirect peers toward positive behaviour.

Connor displays a strong growth mindset by actively seeking and applying feedback to improve the quality of his work. He also brings genuine joy and school spirit to the community, most notably through his memorable and enthusiastic dance performances to "Bird is the Word." I was able to see his dance prowess this week - I love a student with a great sense of humour who brings joy to others. Well done!



EASTER BONNET PARADE

Thank you to SRC and to everyone for making an Easter Hat/Crazy Hat for Monday's parade. It is always a fun way to see everyone's creations!



9807 8120



9888 1921



Facebook.com/MtWaverleyHeightsPS



Mountwaverley.heights.ps@edumail.vic.gov.au



Mountwaverleyheightsps.vic.edu.au



EASTER BUNNY VISIT

It was a scene of excitement and joy as our Preps and Year 1's had a visit from the Easter Bunny on Wednesday.



END OF TERM AWARD WINNERS

It was fantastic to recognise our end of term award winners at assembly on Monday. Congratulations to everyone who received an award.

Prep D - Marko K	2F - Kira D	4M - Tia A
Prep M - Avyaan T	2J - Aaliyah F	4S - Aalia E
Prep R - Liam T	2M - Ava I	5D - Will K
Prep T - Liam M	3A - Bella T	5J - Patrick K
1G - Kiaan B	3K - Alexandra S	5M - Taliya N
1M - Daiwik S	3M - Aashka H	6D - Vedh K
1S - Angelo A	4C - Victoria W	6G - Eryn J
		6T - Samantha A

Specialist Awards

Art - Zoe F, Hazel W-H, Rosie L, Cash M, Amara C, Eylah K, Pippa S

Japanese - Hayley P, Aarya C, Klay C, Mia B, Jaanvika A, Harrison C, Arya F



9807 8120



9888 1921



Facebook.com/MtWaverleyHeightsPS



Mountwaverley.heights.ps@edumail.vic.gov.au



Mountwaverleyheightsps.vic.edu.au

Music - Billie M, Hudson C, Kayla C, Bridget D, Mia Jane S, Christina D, Tanya L

PE - Libby C, Alexander L, Tyson N, Alina A-N, Allegra K, Stefanie M, Romeo Z

If you would like a copy of this photo, please contact the office as due to publicity permissions we are unable to publish the photo in our newsletter.

HOUSE POINT WINNERS - OPALS

Congratulations to Opals for winning the House Point competition for Term 1

CHOIR & BAND

Well done to our school band and choir who performed at Monday's assembly.

It is lovely to have so many students involved.



MULTICULTURAL DAY

WOW! What a day it has been! Thank you to our wonderful Greek Families (Joanna, Nicolette & Maria), our Yr 6 families that assisted in making our dragon boats (Amy, Eoin & Ruby, Romeo and Emily's grandparents for their performance and our School Council Committee members (Kaye & Prue) who ran sessions, helped in the preparation of the resources for the sessions or organised the delicious lunch. It was amazing to have so many of our parents and grandparents involved in the day.



9807 8120



9888 1921



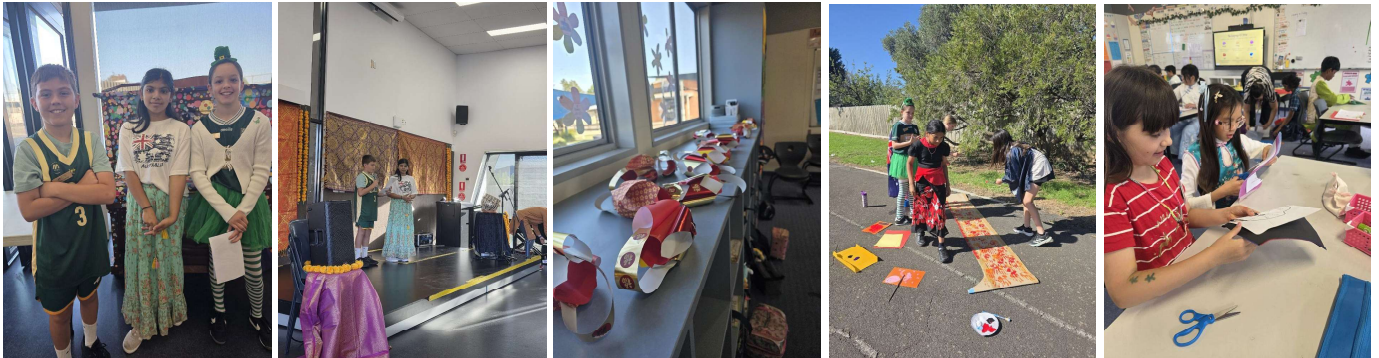
Facebook.com/MtWaverleyHeightsPS



Mountwaverley.heights.ps@edumail.vic.gov.au



Mountwaverleyheightsps.vic.edu.au



SCHOOL PHOTO DAY - TUESDAY 28 APRIL

School photos will be held on the second Tuesday back next term. Please see details below on how to order photos. Individual and group photos will be taken on the day. Sibling photos will only be taken if pre-booked. If you are unable to order online, envelopes will be available from Term 2.

order your school photos now

to order visit: www.advancedlife.com.au
enter code: **RCC Y8R QXK**



**or collect a cash order envelope
from your school office**



advancedlife
school photography & print specialists

Let's celebrate...

- The parents who donated Easter Eggs and all the families who purchased tickets. We had over 28 hampers to give away. Our largest one yet! Thank you
- PA for their fundraising efforts this term and to all the volunteers who supported the activities.
- A busy term full of activities and opportunities - Swimming, Twilight Sports, Easter celebrations, Multicultural Day and numerous excursions and incursions.
- Our wonderfully diverse culture. Great to celebrate our cultural background and to build an understanding of others.
- The festivities and commemorations this April - including Passover, Vaisakhi, Navavarsha, Aluth Avurudda & Songkran, Theravada New Year, Easter, Orthodox Easter



Sharon Reiss-Stone

Principal

Around the classes

Reading

- We have learnt the letter sounds s, a, t, p, i, n & m.
- We are learning our Tricky Words.
- We are learning about the 3 ways of reading. E.g: reading the picture, reading the words and retelling the story.
- We are learning different reading strategies to help with our reading.



Maths

- We are learning to trust the count.
- We are learning ways to make numbers up to 10.
- We are learning about patterns.
- We are learning to identify 2D shapes.
- We are learning about days of the week.



Reading

- Teach Your Monster to Read
- Word Searches
- Morning reading
- Our Big Book



Maths

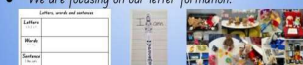
- Challenges
- Playing new games like race to 50/100
- Essential Assessment
- Learning numbers into the 100s
- Doing Place Value
- Counting by 10s



Prep


Writing

- We are learning to use s, a, t, p, i, n, & m in our writing.
- We are learning to write our Tricky Words.
- We are learning to include spaces in our writing.
- We are writing about our language experiences
- We are focusing on our letter formation.



Inquiry

- Exploring our community and who are the helpers in the community.
- Paramedic incursion.




Presented by

Year 1


Writing

- Free Writing
- Writing and posting Postcards
- Sound of the week



Inquiry & Wellbeing

- Light & Sound Incursion
- How light can travel. Transparent, Translucent, Opaque



Presented by Benji and Benjamin, 15

Reading

- Somebody Wanted But So Then strategy
- Problem/ Solution using story mountain (UH OH PHEW)
- Back up and reread/ make the bumpy smooth
- Prefaces and suffixes



Maths

- Place value games
- 2D shapes: Making 2D robots
- Graphs/ data collecting
- Seasons
- Calendars



Reading

- Reading the whole text before answering questions
- Using text clues and evidence to support our answers
- Finding information in texts
- Using our prior knowledge to help us answer inferential questions.
- Expanding Vocabulary
- Responding to texts



Maths

- Place Value and Number Patterns
- Measurement Length & Time
- Geometry 2D & 3D shapes
- Addition & Subtraction strategies
- Multiplication & Division
- Unpacking worded problems
- Money & Friends of 100
- Being resilient learners



Presented by Poppy L. Neave

Year 2

Writing

Narrative - Fables

- beginning - writing a strong start
- middle - including dialogue
- end - wow words



Inquiry

- Multicultural families
- Family Trees
- Past and present: toys, communication, technology, school, home life and games
- Mont DeLancey excursion




Presented by ????

Year 3


Writing

- Writing narratives based on Possum Magic, The Runaway Hug & Kipper at the Beach
- Word choice: nouns, adjectives, verbs and adverbs
- Compound sentences
- Revising
- Editing
- Power planning using different planning templates
- Spelling Dictation & Handwriting



Inquiry - First Contact

- First Nations people and their connection to land
- The Concept of Terra Nullius
- Life as a Convict
- Contact before Captain Cook
- Positive and negative interactions with the early settlers
- Making a tall ship
- Life after Contact
- Google Vids Project



Sustainability News

HELP THE MWHPS SUSTAINABILITY TEAM GROW!

GIVE YOUR POTS A SECOND LIFE!

WHAT WE NEED:

- SIZE:** (Medium pots) 20-40cm tall
- CONDITION:** Clean, sturdy, 'giftable' condition (no major cracks or chips)
- AESTHETIC:** Pots that look nice! (Ceramic, Terracotta, Patterns, Colors. No Plastic)

WHERE TO DONATE:

at the school office

COLLECTION DATES
Donations accepted from Week 1 Term 2 onwards.

WHY DONATE?
Reduce Waste
Support Greenery

PROPAGATION & SALE:
These pots will house propagated succulents! When ready, they will be for sale to the school community, with proceeds supporting our projects.

QUESTIONS? Ask office staff or parent representatives.

Thank you for helping us grow a greener future!

MWHPS SUSTAINABILITY TEAM



9807 8120



9888 1921



Facebook.com/MtWaverleyHeightsPS



Mountwaverley.heights.ps@edumail.vic.gov.au



Mountwaverleyheightsps.vic.edu.au

PE News

Gardiner District Summer Round Robin

Last Friday 27th March Grade 6 students competed in the Gardiner District Summer Round Robin. Students who had already played 3 weekly rounds of summer sport continued in their chosen sport. Although the weather was looking ominous, the day turned out to be perfect weather. The students had a fantastic time working together in their teams. All students' skills improved throughout the day with many teams having multiple wins. A big thank you to parent helpers Sophie and Amy who coached teams on the day. A huge congratulations to the Kickball team who finished runners up in their competition and Cricket and Boys Hot Shot Tennis teams who finished premiers in their competition. Both the Cricket and Boys Hot Shot Tennis teams will continue on later in the year to compete at the Monash Waverley Division competition.



Whole School House Cross Country

At the start of next term (Friday 24th April between 9-11am) the whole school will be participating in the House Cross Country event. Students will be able to wear their house colours on the day. The event will be held on site with students from Prep - Grade 2 running around inside the school grounds. Grade 3-6 students will be running around outside the school along Solomon St and Huntingdale Rd. There is an event that has been sent out via Compass this week with permission required for the event. Thanks to those parents who have already given permission, if you are yet to complete this can it be done over the holidays.

I am looking for parent helpers on the day to assist in the supervision and marking of laps completed by the students. If you are free and have a current WWCC can you please fill out the Google Form. <https://forms.gle/yMTMYCC5YLCLH6ay8>

I hope everyone has a safe, restful and enjoyable Easter and school holidays and look forward to seeing you again next term.

Kate Black

PE Teacher



9807 8120



9888 1921



Facebook.com/MtWaverleyHeightsPS



Mountwaverley.heights.ps@edumail.vic.gov.au



Mountwaverleyheightsps.vic.edu.au

Art News

This week we had a very special visitor in the Art room - Miss M's dog, Abbey, joined us at school! She was a calm and friendly presence, and the students absolutely loved spending time with her.

Throughout the day, students had the opportunity to gently interact with Abbey, practise respectful behaviour around animals, and enjoy a few extra smiles along the way. It was wonderful to see the positive impact she had on our classroom, bringing a sense of calm and connection to our learning.

A big thank you to our students for being so welcoming, gentle and respectful - Abbey felt very loved by all of you!



Jordana Macpherson

Art Teacher



9807 8120



9888 1921



Facebook.com/MtWaverleyHeightsPS



Mountwaverley.heights.ps@edumail.vic.gov.au



Mountwaverleyheightsps.vic.edu.au

Premiers Reading Challenge



Dear parent/carer,

The Victorian Premiers' Reading Challenge is now open and we're excited to be taking part!

All children from birth to Year 10 are welcome to join in.

This year's Challenge theme is 'Stories to discover. Stories to tell'. Stories can inspire and challenge us, and help us grow. They open our eyes to new worlds and new ways of thinking.

The number of books read can be varied for everyone's needs.

All children who complete the Challenge will receive a certificate of achievement signed by the Victorian Premier and former premiers.

To learn more about the Challenge, visit Premiers' Reading Challenge | vic.gov.au

You can also contact our Challenge Coordinator, Penny Fathers with any questions.

Happy reading!

Penny Fathers

Reading Challenge Co-ordinator



9807 8120



9888 1921



Facebook.com/MtWaverleyHeightsPS



Mountwaverley.heights.ps@edumail.vic.gov.au



Mountwaverleyheightsps.vic.edu.au

Parents Association News

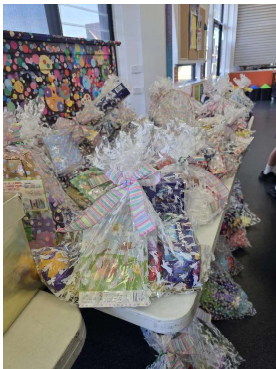
Easter Raffle - Thank you!

Thank you to everyone who purchased raffle tickets and generously donated the amazing goods for an incredible 28 hampers in total. There were plenty of happy winners!



With the support of our school community, the Parents' Association raised over \$2,300 for our school. A fantastic result.

A special thank you to Leanne Robertson and family for managing the raffle on behalf of the Parents' Association. Your time and effort are greatly appreciated.



Working With Children Check (WWCC) – Volunteers

Our school is incredibly fortunate to have such a supportive community, and we sincerely thank all of our volunteers who generously give their time to help with activities, events and programs throughout the year.

To assist on school grounds, all volunteers are required to hold a valid *Working With Children Check (WWCC)*. If you don't currently have one but think you may be able to help at any stage during the year, we encourage you to apply now. The process is quick and easy through the Victorian Government website, and it's free:

<https://service.vic.gov.au/services/working-with-children>

If you already have a WWCC or equivalent (VIT etc), please pop into the school office so staff can take a copy for their records. Each year, even if you have previously provided your details, you will also need to sign the current *School Code of Conduct*.



9807 8120



9888 1921



Facebook.com/MtWaverleyHeightsPS



Mountwaverley.heights.ps@edumail.vic.gov.au



Mountwaverleyheightsps.vic.edu.au

If your WWCC is currently linked to another organisation, you can easily *update your details* online to include or remove a school or association:

<https://www.service.vic.gov.au/services/working-with-children-check-update-details/home>

This is something that often comes up when there isn't enough time to arrange it before an event, so if you think you might like to help out at any stage, it's a great idea to get it organised now.

The PA also extends its appreciation for the support shown throughout the past term. We look forward to Term 2 and wish everyone a wonderful school holiday break, whether you're heading away or enjoying time closer to home.

With thanks,

Kerry Tan

PA President

mwhpsa@gmail.com

Parents' Association Key Dates

TERM 2	
Monday, April 27	PA Meeting - 7:00pm - Location, Matthew Flinders Hotel, Chadstone
Wed / Thurs, May 6&7	Mothers Day Stall - Further details soon.
Wednesday, June 3	PA Meeting - 2:30pm - Location, MWHPS





SCHOOL BEANIES

COMING SOON

\$20

Limited
Introductory
Price



We're excited to introduce a cosy winter beanie as an optional addition to our school uniform. More details will be shared soon in the School Newsletter, on Compass and through your class WhatsApp groups.

PRE-ORDERS OPEN SOON!

Mount Waverley Heights Primary School
Parents' Association Fundraiser



9807 8120



9888 1921



Facebook.com/MtWaverleyHeightsPS



Mountwaverley.heights.ps@edumail.vic.gov.au



Mountwaverleyheightsps.vic.edu.au

Team Kids

Mount Waverley Heights P.S NEWSLETTER



WHAT'S BEEN HAPPENING

We truly have had an egg-celent filled week!

Our end of Term One Highlights have been:

- Learning a *new boardgame* called *Twisty*. If you like strategy games, you'll love this one!
- *Easter Painting & Colouring Competitions*. Students loved the idea of sharing half the sheet with a peer, colouring/ painting it & seeing the two return to one and comparing the dynamic colours chosen by everyone.
- TK's *Golden Easter Egg Hunt*. Pippa S, Jun H, Hayley R, April C, Sawa N. & Charles S. were our BSC Winners. Special mentions went out to Jasleen S, Hazel W. & Miller S. for their incredible sportsmanship. @ ASC Liam T, Klay C, Mila R, Jasper Z, Guranjas A. & Kyla A. were our winners.

Join us for our Autumn Holiday Program because as we say at TeamKids, 'Let the fun begin'!

IMPORTANT DATES



 **Tuesday 7th – Friday 17th of April**

Autumn Holiday Program ! 7am - 6:30pm

 **Monday, 20th of April**

First Day of Term 2. BSC 7-9am & ASC 3:30-6:30pm

 **Term Two !**

The TK BIG Skip Challenge! Weekly skipping challenges. Partnered w/ Dairy Farmers Australia

TEAMKIDS CLUBS

ASC WEEK: **1, Term 2**



MONDAY

Cooking & Musical Game



TUESDAY

Indigenous Game & Lego



WEDNESDAY

Sport & Art Attack



THURSDAY

Group Game & Boardgame



FRIDAY

S.T.E.M & Epic Game



Service Mobile: 0402 18 077

Office Phone: 1300 035 000

Service Email: MountWaverleyHeightsPS@teamkids.com.au

Office Email: info@teamkids.com.au



9807 8120



9888 1921



Facebook.com/MtWaverleyHeightsPS



Mountwaverley.heights.ps@edumail.vic.gov.au



Mountwaverleyheightsps.vic.edu.au

Team Kids VIC - Mt Waverley Heights Primary



7:00 AM START
6:30 PM END

PLEASE ARRIVE BY 9AM ON EXCURSION DAYS



INHOUSE



INCURSION



EXCURSION

MON - 6TH APR	TUE - 7TH APR	WED - 8TH APR	THU - 9TH APR	FRI - 10TH APR
CLOSED				
	Shelter Survivors	Active Warriors	The Magic Faraway Tree	Squish-a-Scene
	Ready to become a master builder? Join us and learn how to create your very own indoor shelter using bricks. So let's use our imaginations and get building!	Get ready for high-energy action as kids dive into Boot Camp challenges, Nerf Zones and epic Team Building games! They'll run, dodge, climb and conquer obstacle courses while building confidence, resilience and teamwork skills. It's fast-paced, action-packed fun!	Today you're off to the movies to follow a family who move to the countryside and discover a magical tree with quirky residents. When the children are whisked away to fantastical lands, their adventures help bring the family closer together.*PG Rated, Allergy Alert	It's a little squish, a lot of play-activity, and a hands-on adventure in building your own 2D diorama with soft, squishy air-dry clay. Think jungle hideouts, underwater kingdoms and wildly imaginative worlds brought to life one glorious smooth at a time.
	Daily Fee \$118.00	Daily Fee \$109.00	Daily Fee \$133.00	Daily Fee \$114.00
	After Max CCS* \$11.80	After Max CCS* \$10.90	After Max CCS* \$13.30	After Max CCS* \$11.40

MON - 13TH APR	TUE - 14TH APR	WED - 15TH APR	THU - 16TH APR	FRI - 17TH APR
Wild West Wanderers	Beyond The Branches	Hoppers	Inflatable World	The Amazing Race
Saddle up, partners! Wild West Wanderers are galloping into TeamKids for a day of adventure, imagination, and big-time fun. Step into your own mini outback town to round up challenges, craft cowboy creations, and dive into high-energy games.	Adventure awaits at the top of the tree! Inspired by the Magic Faraway Tree, children will explore new lands, conquer challenges, play creatively, and make an enchanted keepsake. A perfect mix of teamwork, imagination, action and calm.	Today you're off to the movies to see what happens when an animal loving 19 year old uses technology to place her consciousness into a robotic beaver to uncover mysteries within the animal world beyond her imagination.*PG Rated, Allergy Alert	We're jumping for joy because TeamKids is going to Inflatable World, the home of some of the biggest indoor inflatables in Aus! We'll climb, leap & crawl through all the thrilling obstacles. *Socks required.	Get ready, set, go! In The Amazing Race, you'll dash, solve, and strategise your way through crazy challenges, tricky puzzles, and wild obstacles. It's fast, frantic, and totally amaze-ing! The ultimate adventure for little explorers and big imaginations!
Daily Fee \$95.00	Daily Fee \$118.00	Daily Fee \$133.00	Daily Fee \$139.00	Daily Fee \$109.00
After Max CCS* \$9.50	After Max CCS* \$11.80	After Max CCS* \$13.30	After Max CCS* \$13.90	After Max CCS* \$10.90

*Child Care Subsidies may apply. \$5 Admin Fee per family. Late Fees apply within 7 days per child. Payment plans available. **Experience/Activity Fee. Programs may be subject to change. Third Party Payment Fees apply. See Terms and Conditions for cancellation policy


FIND A VENUE
TEAMKIDS.COM.AU/VENUES

||

CHOOSE YOUR ADVENTURE
BOOK TODAY!

TEAMKIDS.COM.AU VERSION v20260311.3 1300 035 000

Term Two Activities



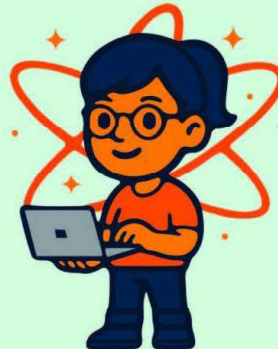


DIGIMAKER
Programming for young Makers

CODING PROGRAM

MOUNT WAVERLEY HEIGHTS PRIMARY SCHOOL

**Time to code.
Think Creatively.
Solve Problems.**




TERM 2 2026 - 8 weeks

Years: 3 to 6
Day: Tuesdays / Wednesdays
Time: 3:40PM – 4:40PM
Fees: \$320 (incl. GST)

JOIN NOW!

www.digimaker.com.au/enrol



9807 8120



9888 1921



Facebook.com/MtWaverleyHeightsPS



Mountwaverley.heights.ps@edumail.vic.gov.au



Mountwaverleyheightsps.vic.edu.au

SCHOOL SOCCER CLASSES

AFTER-SCHOOL SESSIONS



TERM 2 TUESDAYS
3:45-4:45PM



MT. WAVERLEY HEIGHTS PS,
SCHOOL OVAL



PREP - GRADE 6

WHAT YOU'LL LEARN:

- Teamwork & Leadership
- Fundamental Soccer Skills
- Fun Games & Drills
- Building Friendships

SCAN THE QR CODE AND CLICK
“BOOK NOW” TO REGISTER
FOR TERM 2

FREE TRIAL
FOR NEW STUDENTS!



For more info contact socceracademynextgen@gmail.com or visit our website www.nextgensocceracademy.com.au



9807 8120



9888 1921



[Facebook.com/MtWaverleyHeightsPS](https://www.facebook.com/MtWaverleyHeightsPS)



Mountwaverley.heights.ps@edumail.vic.gov.au



Mountwaverleyheightsps.vic.edu.au

We belong

ART
COMPETITION
2026

Deaf Children Australia's annual Art Competition supports, promotes, and celebrates the creative pursuits of young deaf and hard of hearing people.

This year's theme is 'We belong'.

Submissions open now.

SUBMISSION DEADLINE 22 JUNE 2026

Exhibition in September, details to be announced.

CATEGORIES & ART GRANTS

8 to 11 Years

1st Prize \$500

Runner Up \$250

12 to 17 Years

1st Prize \$700

Runner Up \$300

18 to 23 Years

1st Prize \$1000

Runner Up \$500

Early Education

Group Project

(0 to 11 Years)

1st Prize \$800

Runner Up \$450

For more info go to:

deafchildrenaustralia.org.au

or email us with any questions:

events@deafchildren.org.au



Deaf
Children
Australia.



9807 8120



9888 1921



[Facebook.com/MtWaverleyHeightsPS](https://www.facebook.com/MtWaverleyHeightsPS)



Mountwaverley.heights.ps@edumail.vic.gov.au



Mountwaverleyheightsps.vic.edu.au

Kids Unlimited

EXTRA CURRICULAR ACTIVITIES AT Mt Waverley Heights Primary

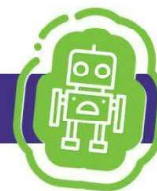
Dance



Move, Groove & Express!
Our Dance program lets kids show their style while learning cool moves like popping, locking, and trendy footwork. It's all about creativity, rhythm, and having fun with friends on the dance floor!

Day: TUESDAYS
Time: 1:40 – 2:30 pm
Starts on: 28 April

Robotics



Build, Program & Explore!
In this fun program, kids use LEGO WeDo and Spike kits to build and program their own robots—boosting creativity, teamwork, and problem-solving while having a blast!

Day: FRIDAYS
Time: 1:40 – 2:30 pm
Starts on: 1 May

**LEARN THE
MOVES.
FEEL THE
RHYTHM.**

**LEARN.
CREATE.
DOMINATE.**

Kids Unlimited

1300 424 377

info@kidsunlimited.com.au



9807 8120



9888 1921



[Facebook.com/MtWaverleyHeightsPS](https://www.facebook.com/MtWaverleyHeightsPS)



Mountwaverley.heights.ps@edumail.vic.gov.au



Mountwaverleyheightsps.vic.edu.au

BE SAFE AROUND SCHOOL CROSSINGS



- Ensure you use a designated school crossing when dropping off or picking up children
- Always use the school crossing when flags are displayed
- Some children's crossings have a supervisor - always follow their instructions
- If there is no supervisor, look and listen for traffic before crossing
- Only cross the road when safe to do so, and keep looking and listening while crossing.

IF YOU'RE A DRIVER/RIDER:

- Always watch out for children near schools
- Do not overtake a vehicle stopping/stopped at a crossing
- Stop if someone is about to cross or is crossing - even if there is no supervisor
- Stop if a hand-held 'Stop' sign is displayed
- Only proceed when all pedestrians, including the supervisor, are clear of the crossing
- Approach the crossing at a speed slow enough to stop safely if needed
- Always be aware of all parking signage and park legally.



9807 8120



9888 1921



Facebook.com/MtWaverleyHeightsPS



Mountwaverley.heights.ps@edumail.vic.gov.au



Mountwaverleyheightsps.vic.edu.au



MUSIC LESSONS

GUITAR ONLINE ENROLMENTS
 KEYBOARD CALL 0401951592
 SINGING DON'T MISS OUT


www.genesismusicschool.com.au

www.genesismusicschool.com.au

PLEASE FILL OUT AND SUBMIT THE ENROLMENT FORM ON OUR WEBSITE

ONCE WE RECEIVE YOUR DETAILS, WE WILL CONTACT YOU.

IF YOU HAVE ANY QUESTIONS, FEEL FREE TO CONTACT US VIA EMAIL OR PHONE.



info@genesismusicschool.com.au

Cooking, Creating & Growing Confidence

School Holiday Program

Ages 10-16

Already hearing "I'm bored"?
School holidays haven't even started!

This is a full day where young people will:

- cook together
- create things with their hands
- learn practical life skills
- spend time with peers their age



Dates: 7th, 9th, 14th, 16th April

Location: Monash Community Inn,

72 Clayton Rd, Clayton

8:00am – 4:00pm

Morning tea, lunch & afternoon tea included

Only \$99 per day

Limited places available

more info: www.heroesoftoday.org



Because sometimes all it takes is the chance to try



APRIL SCHOOL HOLIDAYS SOCCER CAMP

3 Days of Football, Fun & Skill Development

Open to players of all abilities – beginners welcome

WHAT'S INCLUDED

LIMITED SPOTS AVAILABLE - SECURE YOUR PLACE

\$300 for the full 3-day camp
 or **\$100** per day
 (day-by-day bookings available)



Scan the QR code to secure your spot today

EARLY BIRD SPECIAL
 Register before April 7th - 3-Day Camp Only **\$250**

LOCATION
 Egan Lee Reserve
 63 Wallace Road
 Knoxfield

PROGRAM DETAILS
 Wednesday 15th – Friday 17th April
 5-12 Years Old
 9:00am - 3:30pm

www.nextgensocceracademy.com.au



9807 8120



9888 1921



[Facebook.com/MtWaverleyHeightsPS](https://www.facebook.com/MtWaverleyHeightsPS)



Mountwaverley.heights.ps@edumail.vic.gov.au



Mountwaverleyheightsps.vic.edu.au



The Social Domain
Skills For Life

Speech Pathology | Occupational Therapy | Psychology | Social Skills Groups

SOCIAL SKILLS HOLIDAY PROGRAMS!



RUN BY SPEECH PATHOLOGISTS & OCCUPATIONAL THERAPISTS

8-10 APRIL
14-16 APRIL
Caulfield North

Group 1
5-8 years

Group 2
9-12 years

Skills Covered:

- ✓ Forming Friendships
- ✓ Conversational Skills
- ✓ Perspective Taking
- ✓ Flexible Thinking
- ✓ Problem Solving and Reasoning
- ✓ Resilience and Managing Feelings

Scan to express interest:



thesocialdomain.com.au | 1300 950 992 | admin@thesocialdomain.com.au

Come & Try CALISTHENICS at Emmanuel



DANCING - ACRO - BALLET
ACTING - APPARATUS - GAMES
TEAMWORK - FUN - PERFORMANCE

TINY TOTS (3-5 YEARS)
SATURDAYS 11:00 - 11:45AM

TINIERS (7 YEARS & UNDER)
SATURDAYS 9:00 - 10:45AM
MONDAYS 4:30 - 6:00PM

SUB JUNIORS (10 YEARS & UNDER)
SATURDAYS 12:00 - 3:00PM

REGISTER FOR A FREE TRIAL



For more info: admin@emmanuelcalisthenics.com.au or Christie 0403 313 990

MONASH COMIC CON



Saturday 11 April 2026 | 10am-3pm
Wheelers Hill Library



Full program

monlib.vic.gov.au/comic-con

KIDS | TEENS | ADULTS

Workshops | Cosplay | VR headsets | Trivia
Live music | Optimus Prime + Star Wars characters
D&D | Photo booth | Artist's Alley | +more!



9807 8120



9888 1921



Facebook.com/MtWaverleyHeightsPS



Mountwaverley.heights.ps@edumail.vic.gov.au



Mountwaverleyheightsps.vic.edu.au