

Thursday 26 March, 2026

Dates To Remember

TERM ONE 2026

Monday 30th March

Easter Hat parade - 9.10am
End Of Term Assembly - 9:30am

Tuesday 31st March

EMR Swimming

Wednesday 1st April

Easter Egg Hunt - 2:30pm

Thursday 2nd April

Multicultural Day
End Of Term 1 - 2:30pm

TERM TWO 2026

Monday 20th April

Term 2 Commences - 9am

Friday 24th April

MWHPS Cross Country 9am - 11am

Tuesday 28th April

School Photos

Wednesday 6th May

Mothers Day Stall

Friday 8th May

Interschool Sport Day Round 1 - 9am -11am
Mothers Day Event - 2:30pm
Year 7 2027 - Placement Applications Due

Friday 18th May

District Cross Country 10am - 12:30pm

Principal's Report

STOP WORK ACTION -

Thank you to all our families for kindly making alternate arrangements for Tuesday's stop work action. We also appreciated those who completed the form to let us know that their child would be attending school. Your support helped make a challenging day much more manageable. Thank you.

TOILETS

Our new toilets will be ready to use from day one Term 2. They look lovely, and we hope students take pride in them and care for them better than our current facilities.

I have had a chat with (Yr 2-6) girls and boys this week regarding the use of toilet facilities. Our admin team are being notified of issues up to 10 times a day. They are also cleaning them at the same rate! Girls' sanitary products are being thrown or stuck all over the toilets, whole toilet rolls are being flushed, used toilet paper is being put in hand basins, basin plugs pushed down and water left running which flood the toilet block, food in toilet bowls and urine on the floor. Just a few ongoing issues!

We would love for you to have a discussion with your child/ren around using toilet facilities appropriately and how they can ensure that they leave the cubicle clean. Thank you in advance.



Our new toilets - almost complete..



9807 8120



9888 1921



Facebook.com/MtWaverleyHeightsPS



Mountwaverley.heights.ps@edumail.vic.gov.au



Mountwaverleyheightsps.vic.edu.au

END OF TERM ASSEMBLY - MONDAY 30 MARCH

Arrangements are....

- 9:15am - 9:30am Crazy Hat or Easter Bonnet Parade
- 9:30am - 10:30am End of Term Assembly

END OF TERM LUNCH - ITALIAN

We have three delicious pasta dishes to choose from - Spaghetti meatballs, carbonara or the vegetarian mediterranean option. Purchasing lunch is optional. A great way to finish the term and to support our local restaurant - Temple Of Spice. **Orders are due by Friday March 27.**

MULTICULTURAL DAY - THURSDAY APRIL 2nd

Notification of this event was uploaded to Compass today

| | | |
|--|---|--|
| 9am - 10 am | Parents are welcome to attend Dream Space (weather permitting) | Whole School Performance by Bhangra Beats - Classical Indian to Bollywood Music and Dance |
| 10:30am - 12:20pm | Classroom Activities | Students will rotate through a range of activities: P-2 -Indigenous Activity, Exploring lanterns across a range of cultures & Greek Dancing Yr 3-5s - Mangrook Game (Indigenous culture activity), Netherlands Activity, Mexican Art Yr 6s - Chinese Dragon Boats (Double session) |
| SPECIAL LUNCH ORDER DAY (12:20pm-1:00pm) | Parents are welcome to attend | Student performances on the deck in the Dream Space |
| 1:00pm - 1:50pm | Classroom Activities | (As above) |
| 2:00pm - 2:30pm | Parents are welcome to attend Dream Space, then we will move to the oval | Performances from Chinese Dance Performance Group (Grandparents of the Zou family) Dragon Boat Race on the oval |

Let's celebrate...

- The following class/es who had all students arrive to school on time, last week: Prep M and 5D
- A fun last week of Term planned.

Sharon Reiss-Stone

Principal



9807 8120



9888 1921



Facebook.com/MtWaverleyHeightsPS



Mountwaverley.heights.ps@edumail.vic.gov.au



Mountwaverleyheightsps.vic.edu.au

Assistant Principal's Report

WELLBEING

MENTAL HEALTH AND WELLBEING LEADER INITIATIVE

Children's mental health plays a key role in how they grow and learn. When children feel emotionally well, they're better able to handle challenges, build relationships, and reach their full potential. However, not every child experiences this sense of wellbeing.

This year we will be implementing the Mental Health in Primary School Initiative. Mrs Deylen and Miss Douglas are our schools Mental Health and Wellbeing Leaders (MHWL).

MHWLs must be teachers not Allied Health, who work across the school to implement a whole-school approach to mental health and wellbeing. MHWLs

receive comprehensive training from the MHiPS training team at University of Melbourne's, Faculty of Education.



The role of the Mental Health and Wellbeing Leader (MHWL) is to build the capability of the whole school with regard to mental health and wellbeing (identification, promotion and prevention), provide support to staff to better identify and support students with mental health needs, establish clear pathways for referral for students requiring assessment and intervention, and monitor and evaluate student progress.

The MHWL role is quite different to a Student Support Services officer, Allied health professionals or psychologist – it is not a clinical role and is not designed for direct intervention or mental health assessment. The role is designed to provide a proactive focus for the promotion and prevention of mental health and wellbeing through assessment and implementation of context-relevant programs, approaches and initiatives based on a broad and extensive knowledge of the needs of the school.

The MHiPS initiative empowers our leaders to take on the role of Mental Health and Wellbeing, increasing our school's capacity to support students' emotional health. Together, we are creating a community where children and families feel supported every step of the way.

If you have any questions please contact me or our MHWL, Elizabeth and Jemma.

Carolyn Datson

Assistant Principal



9807 8120



9888 1921



Facebook.com/MtWaverleyHeightsPS



Mountwaverley.heights.ps@edumail.vic.gov.au



Mountwaverleyheightsps.vic.edu.au

Literacy News

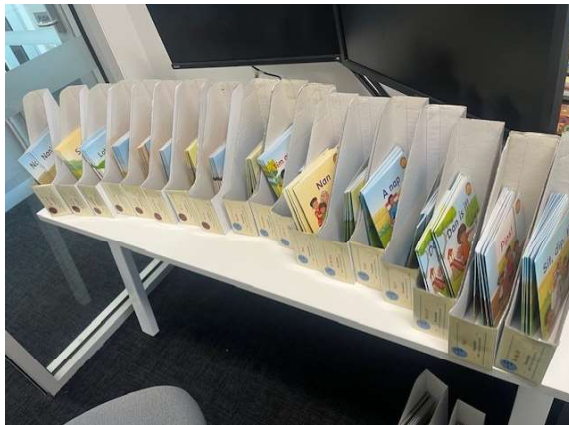
Toward the end of last year and over the Summer break, Mrs Teoh, Mrs Geddes and myself completed an online phonics course. The course affirmed a lot of what we already do at Mount Waverley Heights, but has also helped us to identify areas we can improve. We have decided that it is important to invest in resources that will allow us to implement some of the key ideas learnt from the course. These resources will complement the junior and middle school reading programs.

Using the Library Fund that parents so generously donate to, we have been able to purchase 274 guided reading sets to be utilised in reading. These include:

- 180 sets to be used in the P-2 area
- 8 graphic novel sets for P-2
- 36 chapter books for 2-3
- 50 high interest books for senior students
- Alongside those readers, we have purchased some teacher reference books and sets of sound and 'tricky word' cards to be utilised by the junior school. Students will also have access to an online library of books for the next 12 months, which we will be using in the classroom.



A sample of what was purchased



Most of these resources are now in circulation for teachers and students to use, with only about 50 sets to still make.

Thank you to all who contributed to the library fund and allowed us to purchase these resources.

Emma Thomas

Leading Teacher



9807 8120



9888 1921



Facebook.com/MtWaverleyHeightsPS



Mountwaverley.heights.ps@edumail.vic.gov.au



Mountwaverleyheightsps.vic.edu.au

Multicultural Day

Join us on **April 2nd** to celebrate MWHPS' **multicultural** day! Under the banner of our theme "**Different Cultures, One Community**" we invite everyone to participate in a day of learning, sharing, and fun! Wear your traditional clothing or your flags colours to represent your culture. We will have lots of fun activities planned and a yummy Italian Pasta lunch if you choose to order.

CONQUER CHALLENGE INSPIRE

DIFFERENT CULTURES ONE COMMUNITY

THE WHOLE SCHOOL SHARES A VARIETY OF CULTURES, BUT WE HAVE LEARNT TO BE A COMMUNITY.

MULTICULTURAL DAY IS ALL ABOUT DRESSING IN YOUR CULTURAL CLOTHES AND LEARNING ABOUT DIFFERENT TRADITIONS.



9807 8120



9888 1921



Facebook.com/MtWaverleyHeightsPS



Mountwaverley.heights.ps@edumail.vic.gov.au



Mountwaverleyheightsps.vic.edu.au

Allied Health News

Allied Health Update

Medicare expansion for speech pathology starts in March 2026

- Medicare's MBS M10 item group allied health services (for complex neurodevelopmental conditions and eligible disabilities) has expanded to include **stuttering, speech sound disorders, and cleft lip and/or palate**, for children and young people aged under 25.
- Referrals must be from a GP, consultant physician or specialist.
- see more on: <https://www.speechpathologyaustralia.org.au/Public/Members/News-and-publications/Articles/2026/02-February/medicare-expansion-for-speech-pathology.aspx>



- Under this Medicare item, children can be offered up to **8 assessment and 20 treatment sessions** (life time cap) with a range of allied health professionals, including speech pathologists for conditions such as stuttering, speech sound disorders, and cleft lip/palate.
- This expansion provides an \$87.25 rebate per session under the M10 item group to improve access to services.
- Children can still access GP-referred Chronic Disease Management (CDM) plan for specific, chronic conditions (up to five sessions per year).
- If you have any questions, please reach out to your GP or the allied health team.



9807 8120



9888 1921



Facebook.com/MtWaverleyHeightsPS



Mountwaverley.heights.ps@edumail.vic.gov.au



Mountwaverleyheightsps.vic.edu.au

PE News

Twilight Sports

What a fabulous whole school event Twilight Sports was last Wednesday night. Well done to all students who participated in the night. It was great to see so many students and families attend the event. A huge congratulations to Opals for winning the overall night. Thank you to the staff who helped run the events on the night and the House Captains who assisted with the Prep - Grade 2 students on the night!

Girls Only Basketball Clinic

On Monday 23rd March the Grade 3-6 girls were able to participate in a clinic run by Basketball Victoria. 2 coaches came and ran a clinic with all the girls involved. They went through different skills involved in basketball and from what I heard everyone had a fabulous time. Below are a few photos from the Grade 6 session.



Kate Black

PE Teacher

PLAY
basketball

- Great for all ages
- Welcomes all abilities
- Fast and fun exercise
- Make friends
- Builds confidence
- Learn teamwork skills
- Develop leadership skills
- Play indoors & outdoors

SCAN THE QR CODE TO FIND OUT MORE

BASKETBALL VICTORIA
basketballvictoria.com.au



9807 8120



9888 1921



Facebook.com/MtWaverleyHeightsPS



Mountwaverley.heights.ps@edumail.vic.gov.au



Mountwaverleyheightsps.vic.edu.au

Parents Association News

Easter Hat Parade and Raffle - Thank you!

A big thank you to everyone who has returned raffle tickets and donated chocolates and Easter goodies. Your generosity is greatly appreciated and has helped us create more than 20 fantastic hampers for our raffle.

We are busily wrapping hampers and getting everything ready for Monday. We can't wait to see you there! The raffle will be drawn at the school assembly following the Easter Hat Parade.

Don't forget to bring along your Easter hat creations on Monday. We're looking forward to seeing all the colourful and creative designs on parade!

Thank you again for your support and good luck to everyone in the draw!



9807 8120



9888 1921



Facebook.com/MtWaverleyHeightsPS



Mountwaverley.heights.ps@edumail.vic.gov.au



Mountwaverleyheightsps.vic.edu.au

Parents' Association Meeting - Everyone Welcome!

Just a reminder that everyone is welcome to come along to our upcoming Parents' Association meeting. This is a relaxed and informal opportunity to stay connected with what's happening at the school, share ideas, and hear about upcoming events and initiatives.

Next Meeting:

Monday, March 30

2:30pm - 3:30pm

MWHPS - Exact location to be confirmed, simply check in with the school office on arrival and they will direct you.

Whether you're able to attend regularly or just drop in occasionally, everyone is welcome. Your involvement helps support our school community, and we would love to see you there!

| TERM 1 | |
|-------------------|---|
| Monday, March 30 | Easter Hat Parade 9:10am - Parents Welcome |
| Monday, March 30 | Easter Raffle Draw - Assembly, after Easter Hat Parade |
| Monday, March 30 | PA Meeting - 2:30pm - Location, MWHPS |
| TERM 2 | |
| Monday, April 27 | PA Meeting - 7:00pm - Location, Matthew Flinders Hotel, Chadstone |
| Wednesday, June 3 | PA Meeting - 2:30pm - Location, MWHPS |

Sneak Peek!

We're excited to share a first look at a new ongoing addition to our school uniform!

We could call it a winter item... but let's be honest, this is Melbourne, and you'll probably get wear out of it all year round!

Scroll over to the next page for a sneaky reveal...

Full details coming very soon!

With thanks,

Kerry Tan

PA President

mwhpspa@gmail.com



9807 8120



9888 1921



Facebook.com/MtWaverleyHeightsPS



Mountwaverley.heights.ps@edumail.vic.gov.au



Mountwaverleyheightsps.vic.edu.au



SCHOOL BEANIES

COMING SOON

\$20
Limited
Introductory
Price



We're excited to introduce a cosy winter beanie as an optional addition to our school uniform. More details will be shared soon in the School Newsletter, on Compass and through your class WhatsApp groups.

PRE-ORDERS OPEN SOON!

Mount Waverley Heights Primary School
Parents' Association Fundraiser



9807 8120



9888 1921



Facebook.com/MtWaverleyHeightsPS



Mountwaverley.heights.ps@edumail.vic.gov.au



Mountwaverleyheightsps.vic.edu.au

Team Kids

Mount Waverley Heights P.S NEWSLETTER



WHAT'S HAPPENING AT TK IN THE LAST WEEK OF TERM ONE ?

Join us for an egg-celent filled week!

Monday's Art Attack will include an easter themed colouring competition with a funky twist!

Tuesday's Sports Club will serve up some serious energy with a friendly game of Tennis. Students Vs. Teachers. Good luck to the Students!

Wednesday's Golden Easter Egg Hunt will be at BSC (@ 8:30am) & ASC (@ 4:15pm). Join in on an adventure around the school for our colourful Easter Eggs. Brain Bending Prizes to be won!

Never LEGO of your dreams and Celebrate the last day of Term 1 at TK's **Lego Party!** Don't be Jelly (hint, hint) ... you won't leave empty handed thanks to **Cooking Club!**

As we say at TeamKids, 'Let the fun begin'!

IMPORTANT DATES



📅 Wednesday, 1st of April

The Golden Easter Egg Hunt!

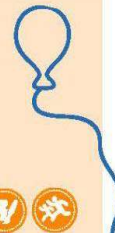
📅 Thursday, 2nd of April

Last day of Term 1. ASC @ 2:30 – 6:30pm

📅 Tuesday 7th - Friday 17th of April

Autumn Holiday Program is out!
Operation Hours are 7am – 6:30pm

TEAMKIDS CLUBS ASC WEEK: 10





MONDAY

Art Attack & Epic Games  

TUESDAY

S.T.E.M & Sports Club  

WEDNESDAY

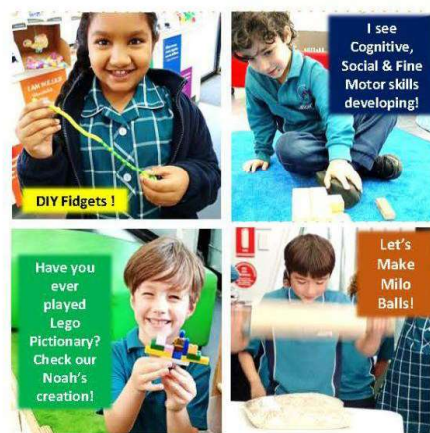
Golden Easter Egg Hunt  

THURSDAY

Cooking & Lego Party  

FRIDAY

Good Friday - Public Holiday



Service Mobile: 0402 18 077
Office Phone: 1300 035 000

Service Email: MountWaverleyHeightsPS@teamkids.com.au
Office Email: info@teamkids.com.au



9807 8120



9888 1921



[Facebook.com/MtWaverleyHeightsPS](https://www.facebook.com/MtWaverleyHeightsPS)



Mountwaverley.heights.ps@edumail.vic.gov.au



Mountwaverleyheightsps.vic.edu.au

Team Kids VIC - Mt Waverley Heights Primary

7:00 AM START | PLEASE ARRIVE BY 9AM ON EXCURSION DAYS
6:30 PM END

INHOUSE
 INCURSION
 EXCURSION

| MON - 6TH APR | TUE - 7TH APR | WED - 8TH APR | THU - 9TH APR | FRI - 10TH APR |
|---------------|--|---|--|---|
| CLOSED | | | | |
| | Shelter Survivors | Active Warriors | The Magic Faraway Tree | Squish-a-Scene |
| | Ready to become a master builder? Join us and learn how to create your very own indoor shelter using bricks. So let's use our imaginations and get building! | Get ready for high-energy action as kids dive into Boot Camp challenges, Nerf Zones and epic Team Building games! They'll run, dodge, climb and conquer obstacle courses while building confidence, resilience and teamwork skills. It's fast-paced, action-packed fun! | Today you're off to the movies to follow a family who move to the countryside and discover a magical tree with quirky residents. When the children are whisked away to fantastical lands, their adventures help bring the family closer together. *PG Rated, Allergy Alert | It's a little squish, a lot of clay-activity, and a hands-on adventure in building your own 2D diorama with soft, squishy air-dry clay. Think jungle hideouts, underwater kingdoms and wildly imaginative worlds brought to life one glorious smooth at a time. |
| | Daily Fee \$118.00 | Daily Fee \$109.00 | Daily Fee \$133.00 | Daily Fee \$114.00 |
| | After Max CCS* \$11.80 | After Max CCS* \$10.90 | After Max CCS* \$13.30 | After Max CCS* \$11.40 |

| MON - 13TH APR | TUE - 14TH APR | WED - 15TH APR | THU - 16TH APR | FRI - 17TH APR |
|---|---|---|---|---|
| | | | | |
| Wild West Wanderers | Beyond The Branches | Hoppers | Inflatable World | The Amazing Race |
| Saddle up, partners! Wild West Wanderers are galloping into TeamKids for a day of adventure, imagination, and big-time fun. Step into your own mini outback town to round up challenges, craft cowboy creations, and dive into high-energy games. | Adventure awaits at the top of the tree! Inspired by the Magic Faraway Tree, children will explore new lands, conquer challenges, play creatively, and make an enchanted keepsake. A perfect mix of teamwork, imagination, action and calm. | Today you're off to the movies to see what happens when an animal loving 19 year old uses technology to place her consciousness into a robotic beaver to uncover mysteries within the animal world beyond her imagination. *PG Rated, Allergy Alert | We're jumping for joy because TeamKids is going to Inflatable World, the home of some of the biggest indoor inflatables in Aus! We'll climb, leap & crawl through all the thrilling obstacles. *Socks required. | Get ready, set, go! In The Amazing Race, you'll dash, solve, and strategise your way through crazy challenges, tricky puzzles, and wild obstacles. It's fast, frantic, and totally amaze-ing! The ultimate adventure for little explorers and big imaginations! |
| Daily Fee \$95.00 | Daily Fee \$118.00 | Daily Fee \$133.00 | Daily Fee \$139.00 | Daily Fee \$109.00 |
| After Max CCS* \$9.50 | After Max CCS* \$11.80 | After Max CCS* \$13.30 | After Max CCS* \$13.90 | After Max CCS* \$10.90 |

*Child Care Subsidies may apply. \$5 Admin Fee per family. Late Fees apply within 7 days per child. Payment plans available. **Experience/Activity Fee. Programs may be subject to change. Third Party Payment Fees apply. See Terms and Conditions for cancellation policy

FIND A VENUE
TEAMKIDS.COM.AU/VENUES

CHOOSE YOUR ADVENTURE
BOOK TODAY!

TEAMKIDS.COM.AU VERSION v20260311.5 1300 035 000

Term Two Activities



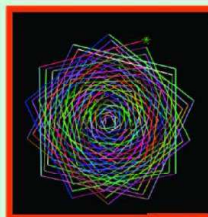
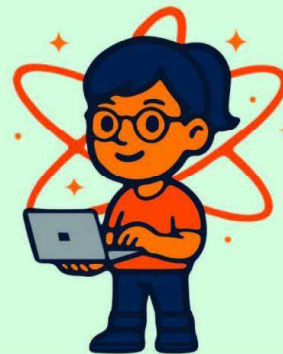
DIGIMAKER

Programming for young Makers

CODING PROGRAM

MOUNT WAVERLEY HEIGHTS PRIMARY SCHOOL

**Time to code.
Think Creatively.
Solve Problems.**



TERM 2 2026 - 8 weeks

Years: 3 to 6

Day: Tuesdays / Wednesdays

Time: 3:40PM – 4:40PM

Fees: \$320 (incl. GST)

JOIN NOW!

www.digimaker.com.au/enrol



9807 8120



9888 1921



Facebook.com/MtWaverleyHeightsPS



Mountwaverley.heights.ps@edumail.vic.gov.au



Mountwaverleyheightsps.vic.edu.au

SCHOOL SOCCER CLASSES

AFTER-SCHOOL SESSIONS



TERM 2 TUESDAYS
3:45-4:45PM



MT. WAVERLEY HEIGHTS PS,
SCHOOL OVAL



PREP - GRADE 6

WHAT YOU'LL LEARN:

- Teamwork & Leadership
- Fundamental Soccer Skills
- Fun Games & Drills
- Building Friendships

SCAN THE QR CODE AND CLICK
“BOOK NOW” TO REGISTER
FOR TERM 2

FREE TRIAL
FOR NEW STUDENTS!



For more info contact socceracademynextgen@gmail.com or visit our website www.nextgensocceracademy.com.au



9807 8120



9888 1921



[Facebook.com/MtWaverleyHeightsPS](https://www.facebook.com/MtWaverleyHeightsPS)



Mountwaverley.heights.ps@edumail.vic.gov.au



Mountwaverleyheightsps.vic.edu.au

We belong

ART
COMPETITION
2026

Deaf Children Australia's annual Art Competition supports, promotes, and celebrates the creative pursuits of young deaf and hard of hearing people.

This year's theme is 'We belong'.

Submissions open now.

SUBMISSION DEADLINE 22 JUNE 2026

Exhibition in September, details to be announced.

CATEGORIES & ART GRANTS

8 to 11 Years

1st Prize \$500

Runner Up \$250

12 to 17 Years

1st Prize \$700

Runner Up \$300

18 to 23 Years

1st Prize \$1000

Runner Up \$500

Early Education

Group Project

(0 to 11 Years)

1st Prize \$800

Runner Up \$450

For more info go to:

deafchildrenaustralia.org.au

or email us with any questions:

events@deafchildren.org.au



Deaf
Children
Australia.



9807 8120



9888 1921



[Facebook.com/MtWaverleyHeightsPS](https://www.facebook.com/MtWaverleyHeightsPS)



Mountwaverley.heights.ps@edumail.vic.gov.au



Mountwaverleyheightsps.vic.edu.au

Kids Unlimited

EXTRA CURRICULAR ACTIVITIES AT Mt Waverley Heights Primary

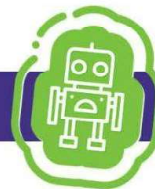
Dance



Move, Groove & Express!
Our Dance program lets kids show their style while learning cool moves like popping, locking, and trendy footwork. It's all about creativity, rhythm, and having fun with friends on the dance floor!

Day: TUESDAYS
Time: 1:40 – 2:30 pm
Starts on: 28 April

Robotics



Build, Program & Explore!
In this fun program, kids use LEGO WeDo and Spike kits to build and program their own robots—boosting creativity, teamwork, and problem-solving while having a blast!

Day: FRIDAYS
Time: 1:40 – 2:30 pm
Starts on: 1 May

**LEARN THE
MOVES.
FEEL THE
RHYTHM.**

**LEARN.
CREATE.
DOMINATE.**

Kids Unlimited

1300 424 377

info@kidsunlimited.com.au



9807 8120



9888 1921



[Facebook.com/MtWaverleyHeightsPS](https://www.facebook.com/MtWaverleyHeightsPS)



Mountwaverley.heights.ps@edumail.vic.gov.au



Mountwaverleyheightsps.vic.edu.au

BE SAFE AROUND SCHOOL CROSSINGS



- Ensure you use a designated school crossing when dropping off or picking up children
- Always use the school crossing when flags are displayed
- Some children's crossings have a supervisor - always follow their instructions
- If there is no supervisor, look and listen for traffic before crossing
- Only cross the road when safe to do so, and keep looking and listening while crossing.

IF YOU'RE A DRIVER/RIDER:

- Always watch out for children near schools
- Do not overtake a vehicle stopping/stopped at a crossing
- Stop if someone is about to cross or is crossing - even if there is no supervisor
- Stop if a hand-held 'Stop' sign is displayed
- Only proceed when all pedestrians, including the supervisor, are clear of the crossing
- Approach the crossing at a speed slow enough to stop safely if needed
- Always be aware of all parking signage and park legally.



9807 8120



9888 1921



Facebook.com/MtWaverleyHeightsPS



Mountwaverley.heights.ps@edumail.vic.gov.au



Mountwaverleyheightsps.vic.edu.au



ENROL NOW

MUSIC LESSONS

GUITAR ONLINE ENROLMENTS
 KEYBOARD CALL 0401951592
 SINGING DON'T MISS OUT

www.genesismusicschool.com.au

ASHWOOD WOLVES BASKETBALL CLUB



PLAY BASKETBALL WINTER SEASON 2026

WE ARE LOOKING FOR YEAR 1, 2 OR 3 GIRLS WHO MIGHT WANT TO JOIN A BASKETBALL TEAM.

COME TRAIN WITH US TO HELP YOU PREPARE!

IT'S FREE!!



COME AND TRAIN EVERY MONDAY* *#jointhepack*

4.15-5.30PM • Excludes Public Holidays

OAKLEIGH RECREATION CENTRE
 COURT 5, PARK RD, OAKLEIGH

TO REGISTER YOUR INTEREST OR FOR MORE INFORMATION, TEXT EVERT ON 0413 032 158

Cooking, Creating & Growing Confidence

School Holiday Program

Ages 10-16

Already hearing "I'm bored"?
 School holidays haven't even started!

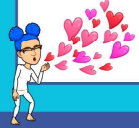
This is a full day where young people will:

- cook together
- create things with their hands
- learn practical life skills
- spend time with peers their age



Dates: 7th, 9th, 14th, 16th April
 Location: Monash Community Inn,
 72 Clayton Rd, Clayton
 8:00am - 4:00pm

Morning tea, lunch & afternoon tea included
 Only \$99 per day
 Limited places available
 more info: www.heroesoftoday.org



Because sometimes all it takes is the chance to try

APRIL SCHOOL HOLIDAYS SOCCER CAMP



3 Days of Football, Fun & Skill Development

Open to players of all abilities – beginners welcome

WHAT'S INCLUDED

▲ LIMITED SPOTS AVAILABLE - SECURE YOUR PLACE

\$300 for the full 3-day camp
 or **\$100** per day
 (day-by-day bookings available)




Scan the QR code to secure your spot today

EARLY BIRD SPECIAL
 Register before April 7th - 3-Day Camp Only **\$250**

LOCATION
 Egan Lee Reserve
 63 Wallace Road
 Knoxfield

PROGRAM DETAILS
 Wednesday 15th - Friday 17th April
 5-12 Years Old
 9:00am - 3:30pm

www.nextgensocceracademy.com.au



The Social Domain
Skills For Life

Speech Pathology | Occupational Therapy | Psychology | Social Skills Groups

SOCIAL SKILLS HOLIDAY PROGRAMS!



RUN BY SPEECH PATHOLOGISTS & OCCUPATIONAL THERAPISTS

8-10 APRIL
14-16 APRIL
Caulfield North

Group 1
5-8 years

Group 2
9-12 years

Skills Covered:

- ✓ Forming Friendships
- ✓ Conversational Skills
- ✓ Perspective Taking
- ✓ Flexible Thinking
- ✓ Problem Solving and Reasoning
- ✓ Resilience and Managing Feelings

Scan to express interest:



thesocialdomain.com.au | 1300 950 992 | admin@thesocialdomain.com.au

Come & Try CALISTHENICS at Emmanuel



DANCING - ACRO - BALLET
ACTING - APPARATUS - GAMES
TEAMWORK - FUN - PERFORMANCE

TINY TOTS (3-5 YEARS)
SATURDAYS 11:00 - 11:45AM

TINIERS (7 YEARS & UNDER)
SATURDAYS 9:00 - 10:45AM
MONDAYS 4:30 - 6:00PM

SUB JUNIORS (10 YEARS & UNDER)
SATURDAYS 12:00 - 3:00PM

REGISTER FOR A FREE TRIAL



For more info: admin@emmanuelcalisthenics.com.au or Christie 0403 313 990

MONASH COMIC CON



Saturday 11 April 2026 | 10am-3pm
Wheelers Hill Library



monlib.vic.gov.au/comic-con

KIDS | TEENS | ADULTS

Workshops | Cosplay | VR headsets | Trivia
Live music | Optimus Prime + Star Wars characters
D&D | Photo booth | Artist's Alley | +more!