

Thursday 19 March, 2026

Dates To Remember

TERM ONE 2026

Monday 23rd March

Girls Basketball Clinic - 9am-1:30pm 5/6 girls

Wednesday 25th March

School Council - AGM - 6pm

Friday 27th March

Interschool Sport Gala Day 9am - 2:30pm

Monday 30th March

End Of Term Assembly - 9:30am

Tuesday 31st March

EMR Swimming

Wednesday 1st April

Easter Egg Hunt - 2:30pm

Thursday 2nd April

Multicultural Day

End Of Term 1 - 2:30pm

TERM TWO 2026

Monday 20th April

Term 2 Commences - 9am

Friday 24th April

MWHPS Cross Country 9am - 11am

Tuesday 28th April

School Photos

Wednesday 6th May

Mothers Day Stall

Principal's Report

TWILIGHT SPORTS -

Thanks to Kate for organising a fun sports night for our community yesterday. We couldn't have picked a better night. Congratulations to the Opals in taking out the trophy!



CODING CHALLENGE COMPETITION

Congratulations to the 56 students who entered the coding competition last year. Results have finally come through and we are super proud of all the students who entered. Well done to the following students who received a first, second or third place.



9807 8120



9888 1921



Facebook.com/MtWaverleyHeightsPS



Mountwaverley.heights.ps@edumail.vic.gov.au



Mountwaverleyheightsps.vic.edu.au

First Place	Zachary K, Charlee N
Second Place	Dasha S
Third Place	Max, Orian, Arya, Amelia, Jana, Oliver, Taylia, Fung



SCHOOL LEADERS CONFERENCE

All our House and School Captains attended the ‘Dream & Lead Conference’ in the city on Wednesday. It is a great way for our leaders to explore what leadership is, how to lead and what qualities and characteristics are essential in leaders.



STOP WORK ACTION - TUESDAY

Tomorrow I will notify families if their child’s teacher is participating in the ‘Stop Work’ action. At this stage, approximately half of our teaching staff are expected to take part, with final numbers to be confirmed tomorrow.

We will be unable to secure enough Casual Relief Teachers (CRTs) to replace all staff involved. As a result, students in **affected classes will be advised not to attend school**. However, we understand this may create challenges for some families—particularly those working in critical services. In these cases, we ask that you complete the form provided, so we can place your child in an alternative class for the day.

We strongly encourage families to make alternative arrangements where possible. The form, which will be sent out with tomorrow's notification, will allow families to indicate if their child will be attending despite their teacher's absence. This information will assist us in planning effectively for the day.

A modified program will run on the day.

YEAR 7 OPEN DAYS

To all our Year 5 and 6 parents, I strongly encourage you to attend the Open Days Secondary Schools are offering. It is a great way to get a feel for the school and to compare opportunities.

KEY DATES:

22 April	Enrolment Packs sent out to families
8 May	Yr 7 Applications Due to MWHPS
24 June	Yr 6 Parents will receive placement offers
17 July	Appeals to the Secondary School due. Parents/carers may lodge an appeal with their preferred secondary school. Parents/carers must use the 'Appeal Form' provided with the Year 7 placement outcome. August 4 - Secondary Schools will inform you of the appeal outcome
11 August	Parents/Carers to return their ' Year 7 Placement Acceptance Form ' to MWHPS
18 August	Parents may appeal to the Regional Director. By 16 October, Regions will notify parents/carers of the outcome of the appeal
8th December	Public School Orientation Day - Students to attend their secondary school for the day

UNIFORM POLICY

Just a reminder that students are still required to wear their MWHPS branded tops. Recent government changes relate only to items worn below the waist, which no longer need to be branded.

As MWHPS has never required branded shorts or tracksuit pants, this change does not impact our current uniform. We will continue to require branded tops, dresses, and jackets to maintain a strong sense of school identity and pride.



9807 8120



9888 1921



Facebook.com/MtWaverleyHeightsPS



Mountwaverley.heights.ps@edumail.vic.gov.au



Mountwaverleyheightsps.vic.edu.au

NAPLAN

Unfortunately, technological disruptions during the NAPLAN assessments have been challenging. I have been particularly impressed with the level of resilience and emotional intelligence demonstrated throughout the testing period. Well done to all Year 3 and Year 5 students and teachers.

MULTICULTURAL DAY - THU APRIL 2nd

Notification of this event was uploaded to Compass today

9-10 am	Parents are welcome to attend Dream Space (weather permitting)	Whole School Performance by Bhangra Beats - Classical Indian to Bollywood Music and Dance
10.30-12.20 pm	Classroom Activities	Students will rotate through a range of activities: P-2 -Indigenous Activity, Exploring lanterns across a range of cultures & Greek Dancing Yr 3-5s - Mangrook Game (Indigenous culture activity), Netherlands Activity, Mexican Art Yr 6s - Chinese Dragon Boats (Double session)
SPECIAL LUNCH ORDER DAY (12.20-1.00)	Parents are welcome to attend	Student performances on the deck in the Dream Space
1.00-1.50 pm	Classroom Activities	(As above)
2.00-2.30 pm	Parents are welcome to attend Dream Space, then we will move to the oval	Performances from Chinese Dance Performance Group (Grandparents of the Zou family) Dragon Boat Race on the oval

Did you know?

- Melbourne is one of the world's most multicultural cities
- Over 55% of residents born overseas represent 160 countries
- Over 150 languages are spoken, with 46% of people speaking a language other than English at home.
- It boasts the largest Greek population outside of Greece
- Approximately 80 different faiths are practiced across the city

Did you know? Our school has...

- Representation from 57 different countries (at our last count!)
- One of the largest number of Indigenous students in Monash
- Mandarin, Cantonese and Hindi are the most spoken language in our community



9807 8120



9888 1921



Facebook.com/MtWaverleyHeightsPS



Mountwaverley.heights.ps@edumail.vic.gov.au



Mountwaverleyheightsps.vic.edu.au

Let's celebrate...

- The following class who had all students arrive to school on time, last week: **2F and 2M**
- Let's celebrate all our students who represented the school in coding. Incredible outcome!
- Massive thank you to PA and everyone who assisted in selling, cooking or preparing for our sausage sizzle. Many hands make light work. Thank you
- NAPLAN is over!
- Our Irish families who celebrated St Patrick's Day on Tuesday



Sharon Reiss-Stone

Principal



9807 8120



9888 1921



Facebook.com/MtWaverleyHeightsPS



Mountwaverley.heights.ps@edumail.vic.gov.au



Mountwaverleyheightsps.vic.edu.au

Assistant Principal's Report

WELLBEING

To further support our students and enhance the work of our school-based Allied Health team, we work closely with Deakin University. Through this collaboration, Masters of Counselling students join us on placement, bringing additional support to our students.

Sometimes students experience challenges with friendships, connections, learning behaviours, social and emotional regulation, and managing stress. Teachers recommend students to engage with the Deakin Counsellors based on discussions with their parents. The Deakin Counsellors support students by helping them develop practical strategies they can use in everyday life to cope with these challenges and feel more confident managing school and personal demands. Their focus is not on diagnosis or ongoing counselling, but on giving students the opportunity to develop strategies and confidence to understand and manage the many emotions and experiences that come with growing up.

The Master of Counselling degree is a post-graduate counselling qualification which is fully accredited by the Australian Counselling Association and Psychotherapy and Counselling Federation of Australia. The teaching and learning program, including placement periods, are guided by the National Standards for Counselling and Psychotherapy.

The Masters students have each completed a previous university qualification in a similar field and learn and practice the following: Professional Placement, LifeSpan and Developmental Counselling, Counselling diverse communities, Counselling in Family and Domestic Violence, Counselling in Grief and Loss, Counselling in Trauma, Counselling in Mental Health, Counselling therapies, Group Counselling and Ethical and Legal issues in Counselling.

Finally, the Masters students are supported by Clinical Supervision which is a supervisor who provides confidential and private guidance as needed across any placement.

This term we welcome, both Mykelti and Ashley who have demonstrated a strong capacity to sit with clients and work with whatever presenting issue arises. They will be with us one day a week for the term.

Welcome Mykelti and Ashley!

Carolyn Datson

Assistant Principal



9807 8120



9888 1921



Facebook.com/MtWaverleyHeightsPS



Mountwaverley.heights.ps@edumail.vic.gov.au



Mountwaverleyheightsps.vic.edu.au

Music News

Change in rehearsal timetable:

Wednesday - Junior Choir 1.40pm

Thursday - Senior Choir 1.40pm

Friday - Band 1.40pm

This year I am excited to announce the participation of our choirs in the following events:

Victorian State School Spectacular - Senior Choir

KMEIA Junior Choral Festival - Junior Choir

Members of our choirs will be busy performing in school and community events throughout the year. Weekly attendance is required to participate in these events. All enquiries via Compass only.

Kind regards,
Ellie

THE VICTORIAN STATE SCHOOLS

SPECTACULAR

Eleanor Hardie

Music Teacher



9807 8120



9888 1921



Facebook.com/MtWaverleyHeightsPS



Mountwaverley.heights.ps@edumail.vic.gov.au



Mountwaverleyheightsps.vic.edu.au

Multicultural Day

Join us on **April 2nd** to celebrate MWHPS' **multicultural** day! Under the banner of our theme "**Different Cultures, One Community**" we invite everyone to participate in a day of learning, sharing, and fun! Wear your traditional clothing or your flags colours to represent your culture. We will have lots of fun activities planned and a yummy Italian Pasta lunch if you choose to order.

CONNECT CHALLENGE INSPIRE

**DIFFERENT
CULTURES
ONE COMMUNITY**

THE WHOLE SCHOOL SHARES A VARIETY OF CULTURES, BUT WE HAVE LEARNT TO BE A COMMUNITY.

MULTICULTURAL DAY IS ALL ABOUT DRESSING IN YOUR CULTURAL CLOTHES AND LEARNING ABOUT DIFFERENT TRADITIONS.



9807 8120



9888 1921



Facebook.com/MtWaverleyHeightsPS



Mountwaverley.heights.ps@edumail.vic.gov.au



Mountwaverleyheightsps.vic.edu.au

Parents Association News

Twilight Sports BBQ – Thank You

A big thank you to everyone who helped make our Twilight Sports BBQ such a success. We truly couldn't have done it without the support of our wonderful volunteers, those who kindly lent us eskies, and the incredible help from Louise, Julie and Meg in the office.

We'd especially like to acknowledge the many volunteers who gave their time, including those who generously stayed beyond their allocated slots to fill gaps where needed. Your support is an essential part of what makes these events possible.

A sincere thank you also to the teachers, who were incredibly helpful at the end of the evening in packing everything down.

Finally, a special thank you to our PA members who worked tirelessly behind the scenes and throughout the event, and to TeamKids staff member Fathima, who kindly popped in to lend a hand.

We hope everyone had a fantastic night!



9807 8120



9888 1921



Facebook.com/MtWaverleyHeightsPS



Mountwaverley.heights.ps@edumail.vic.gov.au



Mountwaverleyheightsps.vic.edu.au

Easter Hat Parade and Raffle - Donations Needed!

All raffle tickets have now been sent home with students. Please check school bags if you haven't seen them yet. Once tickets are sold (or if you have any unsold), please return them to the school office as soon as possible.

We are also collecting donations of chocolates and Easter goodies to help create our raffle hampers. Any contributions are greatly appreciated and help make the hampers extra special.

Please return raffle tickets (with money) and any Easter hamper donations to the school office by **next Wednesday, March 25**. If you would like additional raffle tickets, the lovely office staff will be happy to assist.

It's also time to start thinking about your easter hat creations! We look forward to seeing all the amazing hats at the parade!

The raffle will be drawn at the school assembly on Monday, March 30, following the Easter Hat Parade.

Big thanks to Leanne Robertson for managing the raffle and for all the PA members supporting behind the scenes.

With thanks,
 Kerry Tan
 PA President
mwhpspa@gmail.com



Parents' Association Key Dates

TERM 1	
Wednesday, March 25	Final day to return raffle tickets and money
Wednesday, March 25	Final day for Easter Donations
Monday, March 30	Easter Hat Parade 9:10am - Parents Welcome

Monday, March 30	Easter Raffle Draw - Assembly, after Easter Hat Parade
Monday, March 30	PA Meeting - 2:30pm - Location, MWHPS
TERM 2	
Monday, April 27	PA Meeting - 7:00pm - Location, Matthew Flinders Hotel, Chadstone
Wednesday, June 3	PA Meeting - 2:30pm - Location, MWHPS

Mount Waverley Heights Primary School

Easter Hat Parade

Join us for our Easter celebration and let your creativity shine!
 Design and make your own Easter hat at home and wear it in the parade.
 No time to craft?
 No problem!
 You can also rock any funny, wild, or crazy hat.
 We can't wait to see your amazing creations!

Monday March 30th, 9:00am



9807 8120



9888 1921



Facebook.com/MtWaverleyHeightsPS



Mountwaverley.heights.ps@edumail.vic.gov.au



Mountwaverleyheightsps.vic.edu.au

Team Kids

Mount Waverley Heights P.S NEWSLETTER

WHAT'S BEEN HAPPENING

Student's **Harmony Week** Highlights!

- "I'm really good at playing Seven Stones!" – Yichen X
- "These Spinach Pancakes are so good!" – Aidan N
- "Mmmm the Pancake is yummy!" – Jovie T
- "The hello Handprints should be displayed near the front door for everyone to see!" – Alexandra S
- "I know how to say hello in Cantonese" – Harrison M
- "Making flat bread is so easy! Can I have the recipe? It smells really nice" – James H

COMING UP ...

The End of Term **Golden Easter Egg Hunt** will be at BSC (@ 8:30am) & ASC (@ 4:15pm) on *Wednesday the 1st of April*. Join in on an adventure around the school for our colourful Easter Eggs. Prizes to be won!

As we say at TeamKids, 'Let the fun begin'!

IMPORTANT DATES

Wednesday, 1st of April

Join us for our Golden Easter Egg Hunt!

Thursday, 2nd of April

Last day of Term 1. ASC @ 2:30 – 6:30pm

Tuesday 7th - Friday 17th of April

Autumn Holiday Program is out!
Operation Hours are 7am – 6:30pm

TEAMKIDS CLUBS

ASC WEEK: **9** 

- MONDAY**
Indigenous Games 
- TUESDAY**
Art Attack 
- WEDNESDAY**
Cooking Club 
- THURSDAY**
S.T.E.M 
- FRIDAY**
Super Sports Club 



Service Mobile: 0402 18 077 | **Service Email:** MountWaverleyHeightsPS@teamkids.com.au
Office Phone: 1300 035 000 | **Office Email:** info@teamkids.com.au

Team Kids VIC - Mt Waverley Heights Primary

7:00 AM START
6:30 PM END

PLEASE ARRIVE BY 9AM ON EXCURSION DAYS



INHOUSE



INCURSION



EXCURSION

MON - 6TH APR	TUE - 7TH APR	WED - 8TH APR	THU - 9TH APR	FRI - 10TH APR
CLOSED				
	Shelter Survivors	Active Warriors	The Magic Faraway Tree	Squish-a-Scene
	Ready to become a master builder? Join us and learn how to create your very own indoor shelter using bricks. So let's use our imaginations and get building!	Get ready for high-energy action as kids dive into Boot Camp challenges, Nerf Zones and epic Team Building games! They'll run, dodge, climb and conquer obstacle courses while building confidence, resilience and teamwork skills. It's fast-paced, action-packed fun!	Today you're off to the movies to follow a family who move to the countryside and discover a magical tree with quirky residents. When the children are whisked away to fantastical lands, their adventures help bring the family closer together. *PG Rated, Allergy Alert	It's a little squish, a lot of clay-activity, and a hands-on adventure in building your own 2D diorama with soft, squishy air-dry clay. Think jungle hideouts, underwater kingdoms and wildly imaginative worlds brought to life one glorious smooth at a time.
	Daily Fee \$118.00	Daily Fee \$109.00	Daily Fee \$133.00	Daily Fee \$114.00
	After Max CCS* \$11.80	After Max CCS* \$10.90	After Max CCS* \$13.30	After Max CCS* \$11.40

MON - 13TH APR	TUE - 14TH APR	WED - 15TH APR	THU - 16TH APR	FRI - 17TH APR
Wild West Wanderers	Beyond The Branches	Hoppers	Inflatable World	The Amazing Race
Saddle up, partners! Wild West Wanderers are galloping into TeamKids for a day of adventure, imagination, and big-time fun. Step into your own mini outback town to round up challenges, craft cowboy creations, and dive into high-energy games.	Adventure awaits at the top of the tree! Inspired by the Magic Faraway Tree, children will explore new lands, conquer challenges, play creatively, and make an enchanted keepsake. A perfect mix of teamwork, imagination, action and calm.	Today you're off to the movies to see what happens when an animal loving 19 year old uses technology to place her consciousness into a robotic beaver to uncover mysteries within the animal world beyond her imagination. *PG Rated, Allergy Alert	We're jumping for joy because TeamKids is going to Inflatable World, the home of some of the biggest indoor inflatables in Aus! We'll climb, leap & crawl through all the thrilling obstacles. *Socks required.	Get ready, set, go! In The Amazing Race, you'll dash, solve, and strategise your way through crazy challenges, tricky puzzles, and wild obstacles. It's fast, frantic, and totally amaze-ing! The ultimate adventure for little explorers and big imaginations!
Daily Fee \$95.00	Daily Fee \$118.00	Daily Fee \$133.00	Daily Fee \$139.00	Daily Fee \$109.00
After Max CCS* \$9.50	After Max CCS* \$11.80	After Max CCS* \$13.30	After Max CCS* \$13.90	After Max CCS* \$10.90

*Child Care Subsidies may apply. \$5 Admin Fee per family. Late Fees apply within 7 days per child. Payment plans available. **Experience/Activity Fee. Programs may be subject to change. Third Party Payment Fees apply. See Terms and Conditions for cancellation policy

FIND A VENUE
TEAMKIDS.COM.AU/VENUES

||

CHOOSE YOUR ADVENTURE
BOOK TODAY!

TEAMKIDS.COM.AU VERSION v20260311.5 1300 035 000

Term Three Activities



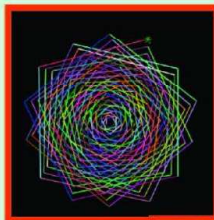
DIGIMAKER

Programming for young Makers

CODING PROGRAM

MOUNT WAVERLEY HEIGHTS PRIMARY SCHOOL

**Time to code.
Think Creatively.
Solve Problems.**



TERM 2 2026 - 8 weeks

Years: 3 to 6

Day: Tuesdays / Wednesdays

Time: 3:40PM – 4:40PM

Fees: \$320 (incl. GST)

JOIN NOW!

www.digimaker.com.au/enrol



9807 8120



9888 1921



Facebook.com/MtWaverleyHeightsPS



Mountwaverley.heights.ps@edumail.vic.gov.au



Mountwaverleyheightsps.vic.edu.au

Kids Unlimited

EXTRA CURRICULAR ACTIVITIES AT
Mt Waverley Heights Primary

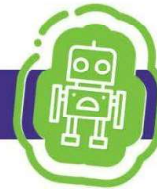
Dance



Move, Groove & Express!
Our Dance program lets kids show their style while learning cool moves like popping, locking, and trendy footwork. It's all about creativity, rhythm, and having fun with friends on the dance floor!

Day: TUESDAYS
Time: 1:40 – 2:30 pm
Starts on: 28 April

Robotics



Build, Program & Explore!
In this fun program, kids use LEGO WeDo and Spike kits to build and program their own robots—boosting creativity, teamwork, and problem-solving while having a blast!

Day: FRIDAYS
Time: 1:40 – 2:30 pm
Starts on: 1 May

**LEARN THE
MOVES.
FEEL THE
RHYTHM.**

**LEARN.
CREATE.
DOMINATE.**

Kids Unlimited

1300 424 377

info@kidsunlimited.com.au



9807 8120



9888 1921



[Facebook.com/MtWaverleyHeightsPS](https://www.facebook.com/MtWaverleyHeightsPS)



Mountwaverley.heights.ps@edumail.vic.gov.au



Mountwaverleyheightsps.vic.edu.au

Open Days



**AMIGA
Montessori**

explore learn discover

JOIN US FOR OUR OPEN DAY



Discover the AMIGA
Montessori difference

Tours, Engaging Activities,
Inspiring Classrooms, Food
& so much more

How does AMIGA make you
feel?

INFORMATION



Mount Waverley

- Saturday 21st of March
- 10.00am - 12.00pm
- 2-6 Hardner Road,
Mount Waverley
- (03) 7503 0568

Burwood

- Saturday 28th of March
- 10.00am - 12.00pm
- 1 Sparks Ave,
Burwood
- (03) 7036 3389



9807 8120



9888 1921



Facebook.com/MtWaverleyHeightsPS



Mountwaverley.heights.ps@edumail.vic.gov.au



Mountwaverleyheightsps.vic.edu.au



SPORTS ACADEMY INFORMATION EVENING

If you're currently researching secondary school options for your son, come along to our **Sports Academy Information Evening** to learn more about our Sports Academy program, important enrolment guidelines and how your son can apply for our **2028 Sports Academy class**.

Date: Monday 30 March, 2026

Time: 6:30pm to 7:30pm

Location: 10 Bosco St Chadstone 3148

Register: www.salesian.vic.edu.au/book-a-tour/
or via the QR Code



9807 8120



9888 1921



Facebook.com/MtWaverleyHeightsPS



MtWaverley.heights.ps@edumail.vic.gov.au



MtWaverleyheightsps.vic.edu.au

BE SAFE AROUND SCHOOL CROSSINGS



- Ensure you use a designated school crossing when dropping off or picking up children
- Always use the school crossing when flags are displayed
- Some children's crossings have a supervisor - always follow their instructions
- If there is no supervisor, look and listen for traffic before crossing
- Only cross the road when safe to do so, and keep looking and listening while crossing.

IF YOU'RE A DRIVER/RIDER:

- Always watch out for children near schools
- Do not overtake a vehicle stopping/stopped at a crossing
- Stop if someone is about to cross or is crossing - even if there is no supervisor
- Stop if a hand-held 'Stop' sign is displayed
- Only proceed when all pedestrians, including the supervisor, are clear of the crossing
- Approach the crossing at a speed slow enough to stop safely if needed
- Always be aware of all parking signage and park legally.



9807 8120



9888 1921



Facebook.com/MtWaverleyHeightsPS



Mountwaverley.heights.ps@edumail.vic.gov.au



Mountwaverleyheightsps.vic.edu.au



ENROL NOW

MUSIC LESSONS

GUITAR ONLINE ENROLMENTS
 KEYBOARD CALL 0401951592
 SINGING DON'T MISS OUT

www.genesismusicschool.com.au

ASHWOOD WOLVES BASKETBALL CLUB



PLAY BASKETBALL WINTER SEASON 2026

WE ARE LOOKING FOR YEAR 1, 2 OR 3 GIRLS WHO MIGHT WANT TO JOIN A BASKETBALL TEAM.

COME TRAIN WITH US TO HELP YOU PREPARE!

IT'S FREE!!



COME AND TRAIN EVERY MONDAY* *#jointhepack*

4.15-5.30PM • Excludes Public Holidays

OAKLEIGH RECREATION CENTRE
 COURT 5, PARK RD, OAKLEIGH

TO REGISTER YOUR INTEREST OR FOR MORE INFORMATION, TEXT EVERT ON 0413 032 158

Cooking, Creating & Growing Confidence

School Holiday Program
 Ages 10-16

Already hearing "I'm bored"?
 School holidays haven't even started!

This is a full day where young people will:

- cook together
- create things with their hands
- learn practical life skills
- spend time with peers their age



Dates: 7th, 9th, 14th, 16th April
 Location: Monash Community Inn,
 72 Clayton Rd, Clayton
 8:00am - 4:00pm

Morning tea, lunch & afternoon tea included
 Only \$99 per day
 Limited places available
 more info: www.heroesoftoday.org



Because sometimes all it takes is the chance to try


The Social Domain
Skills For Life

Speech Pathology | Occupational Therapy | Psychology | Social Skills Groups

SOCIAL SKILLS HOLIDAY PROGRAMS!

RUN BY SPEECH PATHOLOGISTS & OCCUPATIONAL THERAPISTS

8-10 APRIL
14-16 APRIL

 Caulfield North

Group 1
5-8 years

Group 2
9-12 years

Skills Covered:

- ✓ Forming Friendships
- ✓ Conversational Skills
- ✓ Perspective Taking
- ✓ Flexible Thinking
- ✓ Problem Solving and Reasoning
- ✓ Resilience and Managing Feelings

Scan to express interest:



 thesocialdomain.com.au
  1300 950 992
  admin@thesocialdomain.com.au

Come & Try
CALISTHENICS
at Emmanuel






DANCING - ACRO - BALLET
 ACTING - APPARATUS - GAMES
 TEAMWORK - FUN - PERFORMANCE

TINY TOTS (3-5 YEARS)
SATURDAYS 11:00 - 11:45AM

TINIERS (7 YEARS & UNDER)
SATURDAYS 9:00 - 10:45AM
MONDAYS 4:30 - 6:00PM

SUB JUNIORS (10 YEARS & UNDER)
SATURDAYS 12:00 - 3:00PM

REGISTER FOR A FREE TRIAL



For more info: admin@emmanuelcalisthenics.com.au or Christie 0403 313 990