

Thursday 7 December, 2023

Dates To Remember

TERM FOUR

Friday 8th December

Prep Transition 4 - 9.30am - 12.30pm

Monday 11th December

End of Term Assembly 9am

Tuesday 12th December

Year 1 Scotchmans Creek excursion

Wednesday 13th December

Meet 2024 classes

Wednesday 13th December

Grade 6 Graduation

Thursday 14th December

Twilight Sports make-up 9am - 11am

Monday 18th December

Yr 6 awards & Leadership 2024 assembly 9am

Christmas Concert 5 - 7pm

Tuesday 19th December

Year 6 Fun Day

Wednesday 20th December

Last Day of school for 2024 - 1.30pm finish

2024

TERM ONE

Monday 29th January

Staff return - Curriculum Day for students

Tuesday 30th January

Year 1 - Year 6 commence 9am
Prep students no school this week -
assessment interviews

Principal's Report

COLOUR RUN -

WOW! What an event! It was so much fun and it was a joy to watch our students get into the spirit of getting splattered and sprayed! Thank you once again to our organisers Jo Ryan and Anna Burke and to all the parents who volunteered on the day. It was a battle between who was enjoying the event the most - the parents who were spraying water and paint or the students running the course!



ANIMAL DRESS UP DAY

Thank you to all the students who dressed up on Monday to celebrate reaching our school wellbeing goal.



PREP WELCOME BBQ

Thank you to all our families who came along to our welcome BBQ. It was a lovely informal evening and the weather was beautiful too!



PREP ORIENTATION MORNING

Tomorrow from 9.30-12.30pm our new 2024 preps will be spending the morning with us. It is a great opportunity to orientate our new students and begin to build connections and confidence in the school setting.

MEET YOUR 2024 CLASS

Next Wednesday students will be able to meet their teacher and new classmates for the coming year. They will be spending time in their new class from 11.45-1.30pm.

PA SURVEY

Parents Association (PA) would like to gather some feedback around student events and fundraising. We would love you to complete this very short questionnaire, that will help guide future events.

<https://forms.gle/iMri1fWULYYMN4uy5>

STAFFING 2024

Just in case you didn't see it last week....

YEAR			
PREP	Alicia Geddes/Mrs Morris	Jemma Douglas	Meghan Savell (Livingstone PS)
Year 1	Elizabeth Deylen	Alison Shuttleworth (Wallarano PS)	Emma Blake
Year 2	Penny Fathers	Sophie Eastman	Julianne Marshall
Year 3	Scott DeMarchi	Luke Marrone	Alison Orchard (NZ)
Year 4	Jessica May (Beverley Hills PS)	Lucas Ryan	Charlotte Moore (Learn to Soar)
Year 5	Sandra Douglas	Luke Morris	
Year 6	Callum Marini	Kristina Vujovic	
Specialists	Japanese - Masahiro Yamazaki	PE - Kiralee Molnar/Kate Black	Music - Tessa Canning/Kate Black Art - Jordana Macpherson
Learning Specialists	Elizabeth Deylen	Sandra Douglas	Angela Marsland - New math role(Beverley Hills PS)
Leading Teacher	Emma Thomas		

END OF TERM ASSEMBLIES

Traditionally our end of Term 4 assembly has been huge and has required students to sit for a very long time. This year, we will be holding two end of year assemblies. Both assemblies will be held at 9.15am.

- Monday Dec 11 - End of term award winners
- Monday Dec 18 - Year 6 awards and announcement of 2024 school leaders

All are welcome to attend both assemblies!

TWILIGHT SPORTS - Make up event

Our sports teachers will be running a Twilight Sports make up day on Thursday Dec 14 from 9-11am. Parents are most welcome to come down and watch.

XMAS CONCERT

Our school's Xmas concert will be held on Monday Dec 18 from 5-7pm. Please see details from Miss Canning further in the newsletter.

SECOND HAND UNIFORM

If any families who are leaving us at the end of the year have uniforms they would like to donate to our 2nd hand store, it would be much appreciated. We do ask that uniforms are washed and not torn. All donated uniform can be dropped to the office, or sent via the tubs.

LOST PROPERTY

We currently have a lot of jackets and containers in lost property with no names on them. Please come and have a look through to see if any might belong to your child. Any containers not collected will be thrown out and jackets donated to the 2nd hand store.

Let's celebrate...

- All our events and incursions this week - eSafe Kids, MCG Tour, Road Safety, Earth Experience!
- Reaching our Dojo reward
- Welcoming our new Preps and their families

Sharon Reiss-Stone

Principal

Assistant Principal's Report

WELLBEING

As holidays approach, here is an activity that you can do with family and/ or friends. Working on gratitude helps us to be thankful and appreciate what we have in our lives, rather than focusing on what we don't have or what we want. When we practise being grateful, we start to scan the world to look for positives - this only takes 21 days! Practising gratitude every day increases our levels of energy, helps us feel happier and more focussed, determined and optimistic.

TRY IT AT HOME FAMILY ACTIVITY:

FAMILY TREE OF GRATITUDE

WHAT TO DO:

- As you are sitting around the table after dinner or another time that suits you, have a chat about the things or people you are grateful for.
- Give everyone a leaf (template provided or draw your own) to write or draw someone or something they are grateful for.
- You may choose to do more than one leaf each.
- Once you have all written or drawn the things or people you are grateful for, share them with each other.
- Use the brown paper and leaves to create your own 'family tree of gratitude' somewhere in your home. You can continue to add to this or replace leaves every now and then.

YOU WILL NEED:

- Time together as a family.
- Leaf template or create your own.
- Brown paper (could be brown paper bags scrunched up).
- Pencils and textas.

Family Gratitude habit builder:

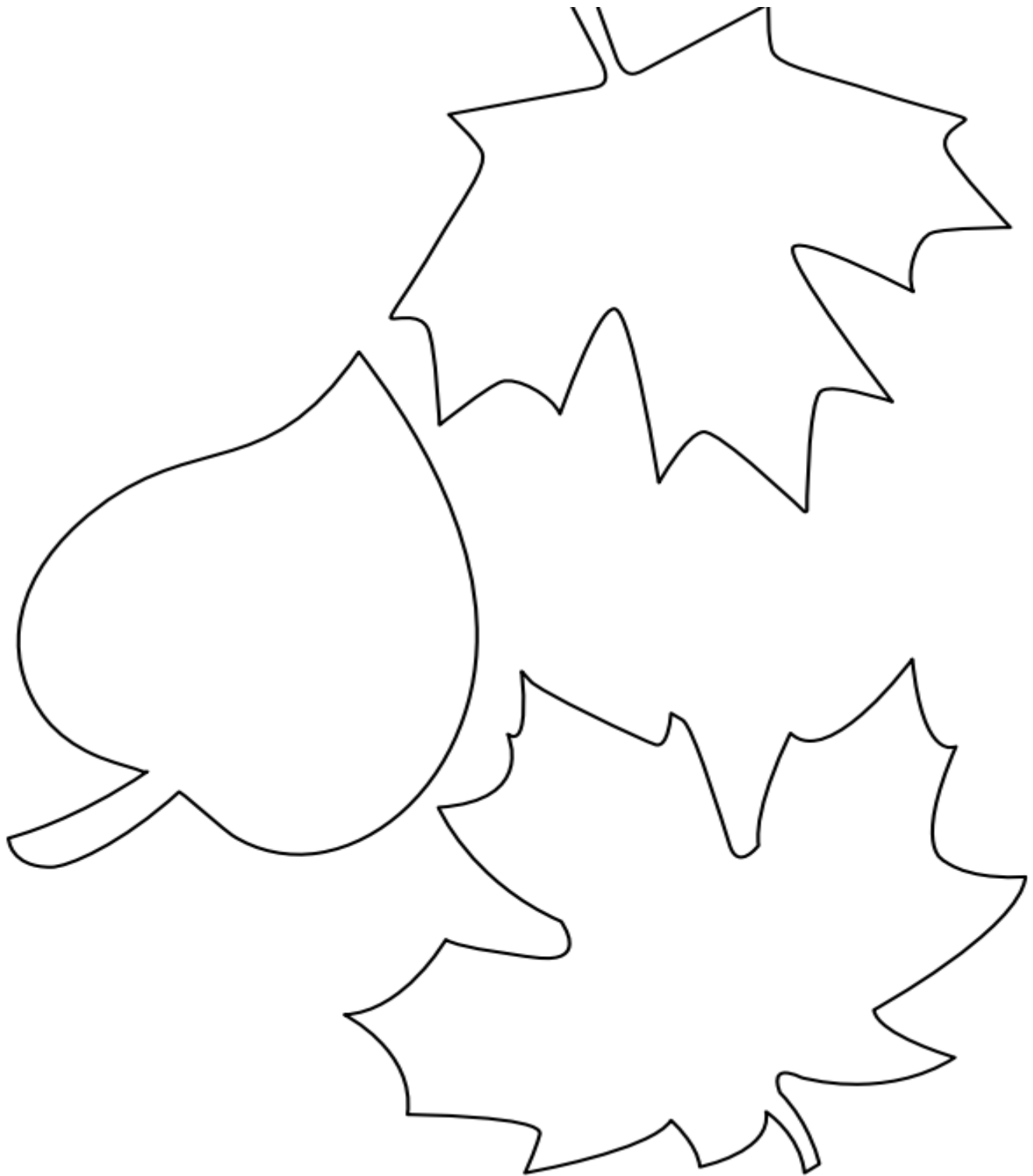
When you are sitting around the dinner table, each person shares 3 things from their day that they are grateful for.

We would love to see what you are doing at home. Please share some photos or let your child's teacher know what you have enjoyed.



For more activities to complete as a family check out theresilienceproject.com.au/at-home





Carolyn Datson

Assistant Principal

 **9807 8120**



mountwaverley.heights.ps@education.vic.gov.au



www.mountwaverleyheightsps.vic.edu.au



[Facebook.com/MtWaverleyHeightsPS](https://www.facebook.com/MtWaverleyHeightsPS)

Music News

Christmas Concert 2023 Monday 18th of December at 5 pm

The Christmas Concert will be held on Monday, December 18th. The students have been working very hard to learn their items and are extremely excited about performing for you!



Details for the concert will be as follows:

4.45 pm: Enjoy a sausage sizzle in the Dreamspace and bring a picnic rug/ camping chair to sit on. Please note: chairs must only be placed on the asphalt area and cannot be used in the blue area of the Dreamspace as students will be using this space. Cash or card will be available.

5:15 pm: Students are to report to their class teacher in the Dreamspace near the stage. The children will remain in their class groups for the entire concert. If you would like to provide your child with a sausage, please do this before the concert starts or after their musical item within the transitional music (see running order below).

If the weather is deemed unsuitable, we will reschedule the performance to Wednesday, December 20th at 9.15 am. A notification will be sent out via Sentral by 3.30 pm if this should occur.

5.30 pm: Concert will begin - sit back and enjoy and feel free to sing along!

7 pm (approx) The concert will conclude with a special visitor!

Costumes:

The students will need to wear **green**, **red**, or Christmas-themed **T-shirt**. They are welcome to come dressed in Christmas costumes if they have them and a Christmas hat or headpiece that will be secure while singing and dancing. Students are required to wear closed-toed shoes and will wear their normal uniform for school during the day.

Running Order

1	Music Club
2	Prep
3	Grade 1
4	Grade 2
5	Grade 3
6	Grade 4
7	Grade 5
8	Grade 6
9	Staff Number
10	Principal Speech

Thank you for your support and we look forward to an evening full of Christmas spirit!

Tessa Canning

Music Teacher



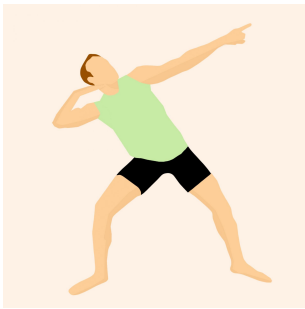
PE News

WHOLE SCHOOL SPORTS MORNING SAVE THE DATE!

All students will be participating in a whole school sports morning on **Thursday 14th December** between **9:00 - 11:00am**.

This event is being held as Twilight Sports was cancelled due to bad weather in Term 1.

Parents are invited to come along and watch. **Students can dress in their house colours** for the day and they will compete in their houses with rotations through athletics events.



Term 1 and 2 PE CALENDAR 2024

<u>Date</u>	<u>Event</u>	<u>Years involved</u>
February 5th - 15th - No Friday	Swimming Program	Year 3-6
February 15th	District Swimming Carnival	Selected students Year 4-6
February 16th, 23rd, March 8th	Weekly sport	Selected Year 5's, All Year 6
March 25th	Interschool Sport Gala Day	Selected Year 5's, All Year 6
March 20th	Twilight Sports	Community Event
April 19th	Cross Country	Whole School
April 24th	District Tennis Trial	Selected Year 5/6 students
May 19th	District Cross Country	Selected Year 4-6

Some dates for your calendar. We have a very busy term 1 and 2 in 2024.

Year 3 - 6 parents, can you please fill out the swimming forms ASAP as we need to give numbers to the pool at the end of this week.



A very big thank you to all those parents who helped with our events this year, your help has not gone unnoticed.

Japanese News

UNKO Museum is coming to Melbourne in January!

Tickets for this Japanese Kawaii Poop Museum are now on Sale!

<https://unkomuseumexperience.com/>



Unko Museum, translated as the “Cute Poop Museum” is a delightful and interactive exhibit adorned with super adorable and colourful Kawaii decor. The installations, displays, and immersive attractions within the museum revolve around the theme of ‘adorable poop’, creating a world where this unlikely subject becomes a work of the eccentric genius.

Date: From January 2024

Duration: 30-60 minutes depending on your pace through the experience

Location: 360 Bourke St Melbourne 3000, Melbourne

Age requirement: All ages!



Sensei

Japanese language teacher

Around the Classes

Wednesday 6th December

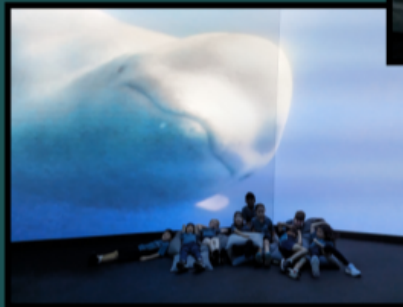
BBC EARTH EXPERIENCE



The Year 2s hopped on a bus to go to the BBC Earth Experience at the Melbourne Convention and Exhibition Center.



We were surrounded by giant screens that played a documentary about animals from each of the seven continents.



We then took a walk through the city to Birrarung Marr where we had our lunch and a play.



YEAR 2 2023



Some of the animals we learnt about at the BBC Earth Experience:



Second Hand Uniform Shop

Did you know you can purchase 2nd Hand Uniforms at Mount Waverley Heights PS?

The 2nd hand uniform shop provides a valuable service to our school community, and to the environment. If your child/ren have outgrown their uniform and don't have siblings to pass them on to, please consider donating them to the 2nd hand uniform shop where they can be purchased at a heavily discounted price by other families in our community.

Simply send your clean items to school with your child and they will be sent to the office via the class tub each morning.

To Donate Uniform Items:

- Send items to school via the tub system or, drop them into the office
- All donated items should be freshly washed and in good condition
- Items should be free from stains, rips and tears
- Items should not be missing buttons and zips must work



To purchase 2nd hand Items:

- All items for sale are \$10 each
- Join the Mount Waverley Heights Primary Community FB page:
<https://www.facebook.com/groups/2926654220921706/>
- View the weekly post showing all available items
- Comment on the post if you would like to purchase – Child name/class/item/size
- Make payment via:
 - Bank Transfer (contact the school office and details can be given), use your child's name and class as reference.
 - Cash payment (correct amount please, no change given) in an envelope in the Tub. Include name and class on the envelope.
- Payments must be received by school no later than specified in the facebook post. Items not paid for by due date, will be returned to the available list for the following week.



Parent's Association News

Hi everyone,

Christmas concert BBQ

There will be a BBQ at the Christmas concert. It'll be great to have a bite and watch our child(ren) perform to us! Families will be able to buy food and refreshments before and during the event.

We need some BBQ helpers - would you be able to help for an hour? There are still slots available, especially for setup and pack up times. Please sign up to help here: <https://volunteersignup.org/DE4QE>

Thank you to those who've already signed up.

PA survey

We welcome your thoughts on past and future fundraising events so please go to this short survey to give feedback and answer some questions: <https://forms.gle/ZfVP2mNmuSeEQ2G39>. You can remain anonymous if you like.

Small Ideas discount card

If you haven't already signed up to one, now is a great time to get one in time for the holidays or buy it as a gift. There are plenty of discounts for family and children's activities, and it pays for itself in a few uses! Check their website or Facebook page for details.

If your membership is due to renew, please cancel it and buy again via the link if possible.

The school will benefit if you purchase via our link. It won't cost you any extra either.

<https://smallideas.com.au/fundraisers/support/?id=30493>



Many thanks for reading!

Parent's Association

Extend News

MOUNT WAVERLEY HEIGHTS PRIMARY SCHOOL

Monday 8 January to Monday 29 January
8.00am – 6.00pm
Session Fee \$90.95*

Please provide morning tea and a healthy, nut free packed lunch for your child.
*Early Bird Rate – Book 14 days in advance.

Activity
Incursion
Excursion

DISCOVER. LEARN. PLAY. **SUMMER**
EXTEND SQUAD
FANTABULOUS school holiday experiences!

PAY FROM JUST \$9.10 AFTER CCS!

*CCS is applied to the full fee, including incursion and excursion costs, making it affordable for all families!

MONDAY 8 JANUARY

TABLOID SPORTS & PAPER ROLL SEAHORSE PUPPETS
Get ready for the tabloid olympics! Compete in a range of challenges and games to see who wins!

Session Fee Only

TUESDAY 9 JANUARY

LEGO COLOUR HUNT & FRIENDSHIP BRACELETS
Treasure hunt with a twist! Find the missing LEGO blocks and match them with the correct colors, collect them all and you win!

Session Fee Only

WEDNESDAY 10 JANUARY

FLY A KITE & BUTTERFLY CHROMATOGRAPHY
Gather your supplies and create your own beautiful kite, once it's complete, head outside and take to the skies!

Session Fee Only

THURSDAY 11 JANUARY

SLIMY SEA CRAFTS
Explore the ocean depths with the gooey goodness of slime and let your creativity flow by creating layered sand art!

Session Fee + \$15

FRIDAY 12 JANUARY

KIDS CLAY PINCH POTS & SURVIVAL TAG
Grab a fistful of clay, it's sculpting time! Create your very own pinch pot for home!

Session Fee Only

MONDAY 15 JANUARY

LEGO STAMPING & PANCAKE SPAGHETTI
Dip straight into the paint with your Lego pieces and make your best art work!

Session Fee Only

TUESDAY 16 JANUARY

BACK TO SCHOOL
Start the school year in style! Bring your creative flair and design a lunch box, sustainable sandwich wrap and bag tag!

Session Fee + \$15

WEDNESDAY 17 JANUARY

RACE TRACKS & YARN CRAFT
Make a car ramp! It's an amazing STEM activity that teaches through play.

Session Fee Only

THURSDAY 18 JANUARY

INFLATABLE WORLD
Join us for a day at the Biggest Indoor Inflatable Playground in Australia! It's all about having fun with your friends.

Session Fee + \$45.25

FRIDAY 19 JANUARY

GLITTER PAPER & GUITAR CRAFT WORKSHOP
Glitter makes everything special. Create your own glitter artwork with the help of your fantastic Educators!

Session Fee Only

MOUNT WAVERLEY HEIGHTS PRIMARY SCHOOL

Monday 8 January to Monday 29 January
8.00am – 6.00pm
Session Fee \$90.95*

Please provide morning tea and a healthy, nut free packed lunch for your child.
*Early Bird Rate – Book 14 days in advance.

Activity
Incursion
Excursion

DISCOVER. LEARN. PLAY. **SUMMER**
EXTEND SQUAD
FANTABULOUS school holiday experiences!

PAY FROM JUST \$9.10 AFTER CCS!

*CCS is applied to the full fee, including incursion and excursion costs, making it affordable for all families!

MONDAY 22 JANUARY

ATHLETICS & WACKIES
Unleash your inner athlete in the ultimate test of fitness with events such as hurdles, running races and much more!

Session Fee Only

TUESDAY 23 JANUARY

AFL
Take after your favourite footy stars and join your friends for an exciting game of AFL!

Session Fee + \$22

WEDNESDAY 24 JANUARY

BOUNCE
Bounce is the perfect playground to develop your freestyle tricks these school holidays!

Session Fee + \$49.45

THURSDAY 25 JANUARY

HULA HOOP RELAY & IN THE GARDEN
Grab some hula hoops and head outside! We're having a relay race.

Session Fee Only

FRIDAY 26 JANUARY

PUBLIC HOLIDAY

MONDAY 29 JANUARY

HEADS, SHOULDERS, KNEES AND CONE ACTIVITY & SPONGE BOATS
Put your brain and body to the ultimate test with this game of reaction and fitness fun!

Session Fee Only



WHAT DO I NEED TO KNOW FOR SUMMER VACATION CARE?

What food should I pack for my child?

Please pack a healthy, nut free morning snack and lunch as you would for a normal school day. The service will provide a delicious and healthy afternoon snack.

Please ensure a refillable water bottle is packed for your child.

What should my child wear to vacation care?

Your child should wear long pants (trackies or leggings), a shirt that covers their shoulders (no singlets), a hat and a warm jacket if it is cold. Your child must also wear closed shoes (no thongs or sandals).

If the children are doing art or a messy activity, please wear old clothing or pack an art smock.

What if I have a question about Child Care Subsidy?

We are approved to process your Child Care Subsidy payments from the federal government. However, we are not in control of how much subsidy is paid by the government to each family.

If you have questions about Child Care Subsidy please contact Services Australia on 136 150.

Can my child attend services in a different state?

If you are enrolled with Extend, you can attend an Extend service anywhere in Australia where a service is available.

You do not need to regularly attend the school itself to attend a holiday program. All primary school aged children are welcome.

Where do I find excursion bus times?

If you have already booked your vacation care sessions, log in to your LookedAfter account, go to your booking calendar and click on the excursion session. Information regarding the session will pop up and you will find the bus time listed under 'Service'.

If you are booking a session, follow the usual booking process. You will find the information under 'Service'.

How will CCS help you save money during vacation care?

CCS covers up to 90% of the session fee, incursion fee and excursion fee based on the household income.

For example, a family eligible for 64% CCS will only pay 36% of the remaining session fee. This means for a 10 hour session costing \$100, the family will pay the gap fee of \$36 with the remaining \$64 covered by CCS. That's \$3.60 per hour!

GENESIS MUSIC SCHOOL

MUSIC LESSONS

Want to learn how to play an instrument? Sign up now!

CALL 0421 426 674 FOR ENQUIRIES

ENROL
GENESISMUSICSCHOOL.COM.AU

Learn at your own pace and improve your skills in playing various instruments under the guidance of our expert musicians.



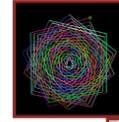
COMPUTER PROGRAMMING CLUB!
@ Mount Waverley Heights Primary School

In a world where technology touches every aspect of our lives, it is crucial that our children understand how it works. To accomplish this objective, there is an exciting coding club running at the school.



DEVELOP SKILLS

- Creativity
- Logical Thinking
- Problem solving



LEARN

- Computer Science Concepts
- Fundamentals of programming Loops, Events, Randomness and more

PROGRAMMING LANGUAGES

- Scratch
- Python
- Javascript
- ... and many more



MAKE

- Games
- Web pages
- Apps

Digimaker structured program runs each term and is charged on a per-term basis. Students will use school computer during the lesson.

8 WEEK TERM PROGRAM

Program for Term 1 2024 is as follows:

Year levels: 3 to 6
Term Fee: \$240 incl GST

AFTER SCHOOL	BATCH 1
3:40pm – 4:40pm	Tuesdays 6 th Feb to 26 th Mar 2024
AFTER SCHOOL	BATCH 2
3:40pm – 4:40pm	Wednesdays 7 th Feb to 27 th Mar 2024

Fill out the form online by **Thursday 14th Dec 2023**



www.digimaker.com.au/enrol

Digimaker will confirm your child's spot via email**

** All important emails from Digimaker will be sent from info@digimaker.com.au. Please ensure this address is whitelisted in your Junk Email filter or added as a Trusted contact.

HOLIDAY E-LEARNING PROGRAM
2 HOURS OF FUN FILLED CODING
FULLY SUPERVISED OVER ZOOM
(5 DAYS A WEEK)

Summer HOLIDAY COURSE

8 - 19 January

NAPLAN Preparation

- Date: 8 - 19 Jan (Mon - Fri, 10 days)
- Detail: Foundation + Public Speaking + NAPLAN Practice Test + Computer based NAPLAN Trial Test

Year **3 & 5** In 2024

Scholarship Preparation

- Date: 8 - 19 Jan (Mon - Fri, 10 days)
- Detail: Foundation + Public Speaking + ACER & Edu style Trial Test (Video Explanation)

Year **4 & 6** In 2024

Selective School Preparation

- Date: 15 - 19 Jan (Mon-Fri, 5 days)
- Detail: New ACER style Selective Trial Test + Lesson

Year **8** In 2024

Timing for all above classes is from 9 am to 3.30 pm (6.5 hours with breaks). Free after class care service available from 3.30 pm to 5 pm for working parents.

Computer based Trial Test
Unique 5 Steps System

Trial Test | Report | Review the test | Report Analysis | No-Open-Ended Questions

CS Education
Oakleigh Campus

0481 841 415
3/6 Atherton Road, Oakleigh, VIC 3166
oakleigh@cseducation.com.au

34 Branches in Australia | www.cseducation.com.au

AUDITION for the Australian Youth Choir 2024.

Enrolments for 2024 are now open to boys and girls from 8 years of age.

An opportunity to develop:

- singing
- musicianship; choral repertoire
- confidence
- self-esteem
- new friendships

Weekly rehearsals in Canterbury during school Term with concerts included in the year.

AUDITION NOW FOR 2024
Appointments are available throughout December by contacting us on:

EMAIL: office2@niypaa.com.au

CALL: 98362877 (leave a message for a return call)

Est. 1975, the Australian Youth Choir is a division of National Institute of Youth Performing Arts Australia (NIYPAA) ABN 28 007 124 629

9807 8120



mountwaverley.heights.ps@education.vic.gov.au

www.mountwaverleyheightsps.vic.edu.au

Facebook.com/MtWaverleyHeightsPS

SCOUT CHRISTMAS TREES!



1st West Waverley Scouts

Weekends 2nd-17th Dec 9am – 3pm

Mount Waverley Heights Primary School
entrance next to 546 Huntingdale Rd, Mt Waverley

Freshly cut, various sizes, prices from \$65

Preorder
1stwestwaverleyscouts.com.au/



Contact 0409 003 514



 9807 8120



mountwaverley.heights.ps@education.vic.gov.au



www.mountwaverleyheightsps.vic.edu.au



[Facebook.com/MtWaverleyHeightsPS](https://www.facebook.com/MtWaverleyHeightsPS)