

Thursday 23 November, 2023

Dates To Remember

TERM FOUR

Friday 24th November

Prep Fire Safety incursion Visit 1
Book Club Due

Monday 27th November

Assembly 2.30pm

Wednesday 29th November

Year 1 Scotchmans Creek Excursion

Wednesday 29th November

School Council Dinner - 6pm

Thursday 30th November

Internal Transition 2.30- 3.30

Friday 1st December

COLOUR RUN

Friday 1st December

Prep Fire Safety incursion Visit 2

Monday 4th December

Whole school Animal Dress-up day

Tuesday 5th December

Prep MCG Tour

Wednesday 6th December

Prep Road Safety Incursion
Year 2 Earth Experience Excursion

Wednesday 6th December

Prep 2024 Welcome BBQ - 5.30 - 7pm

Friday 8th December

Prep Transition 4 - 9.30 - 12.30pm

Wednesday 13th December

Grade 6 Graduation

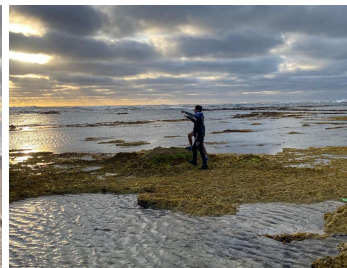
Monday 18th December

Christmas Concert 5 - 7pm

Principal's Report

YEAR 6 CAMP

Thank you to our Year 6 teachers Callum and Kristina, Bec (ES member) and our parent helpers (Darren Pountney and Felicity O'Keefe). It takes many hands to make light work on camp and we are very appreciative of all our parent helpers. By all accounts they had a wonderful time in Warrnambool, enjoying a range of outdoor activities. It is great to offer our students different experiences - from the city, to the country, to the beach!





2024 STUDENT LEADERSHIP SPEECHES

Congratulations to all students who applied for a 2024 leadership position. You should feel really proud of having a go. As I always say to my own children, take every opportunity in life. You never know where it leads you and you will never look back thinking - I should have! Take risks and keep putting yourself in uncomfortable situations. It promotes personal growth - regardless of the outcome.



Leadership Selection Process: House Captains are selected by their peers based on a preferential voting system. School Captains will be short listed by their peers and then those shortlisted will present to the teaching staff on Tuesday Nov 28 at 3.45pm. Teachers will then have an opportunity to discuss and reflect on the oral presentations, as well as each students' attitude, behaviour and how they embody our school expectations - Be Respectful, Be Responsible and Be Inclusive. We look forward to announcing our school leaders at the final whole school assembly on Monday Dec 18.

REPORTS

Teachers are busy conducting assessments and writing student reports. These will be ready to view on Sentral from Thursday Dec 14.

INTERNAL TRANSITION DAY 2

Next Thursday, students will be participating in the second internal transition session. At this session, the students start to complete an activity that will be displayed in or near their 2024 classroom.

PARENT CONTRIBUTIONS

School Council met last week to discuss parent contributions. They decided not to increase the contributions, due to the rise in living costs. As such, **all contributions will remain the same as the 2023 school year.** We make every effort to keep the cost of items and activities to a minimum and affordable for all parents. On behalf of the School Council we request your support in providing a quality education for all students by paying these contributions. They are of vital importance in the running, maintenance and planning of our school.

School contributions were distributed last week via Sentral. Please note that contributions are due by **February 16th 2024.** If you wish to discuss a payment plan option, please see Louise at the school office to organise.

PORTABLE

If you haven't seen it, our newMod 10 portable has been installed. Thank you to everyone for the way you calmly and respectfully managed getting your children to and from school. It was fantastic.



COLOUR RUN

Don't forget to purchase white items for our upcoming colour run! One more day for fundraising! I believe Year 3's are in the lead for the most money raised but it is a tight call. Here are the top 10 students who are in the lead to slime myself and Mrs Datson..... This list could also change...24 hours to go...

George K	3B
Caden C	2F
Jessie B	3B
Sam B	PD
Jax T	3M
Francesco G	3D
Wolfe R	PM
Dyattan K	PK
Veera B	2E
Kian D	3B

Please note that students will be **sprayed with water and colour**, so don't forget to **pack a towel**. If your child is heading to after school care, please pack a change of clothes.

END OF TERM ASSEMBLIES

Traditionally our end of Term 4 assembly has been huge and has required students to sit for a very long time. This year, we will be holding two end of year assemblies. Both assemblies will be held at 9.15am.

- Monday Dec 11 - End of term award winners
- Monday Dec 18 - Year 6 awards and announcement of 2024 school leaders

All are welcome to attend both assemblies!

TWILIGHT SPORTS - Make up event

Our sports teachers will be running a Twilight Sports make up day on Thursday Dec 14 from 9-11am. Parents are most welcome to come down and watch.

XMAS CONCERT

Our school's Xmas concert will be held on Monday Dec 18 from 5-7pm. Please write this into your calendars! More details to follow.

LIBRARY

The library will close for borrowing from Monday 4th December. Next week will be the last week for borrowing. Please ensure you return all library books as soon as possible after that date so that a stocktake of all library books can be taken.

LOST PROPERTY

We currently have a lot of jackets and containers in lost property with no names on them. Please come and have a look through to see if any might belong to your child. Any containers not collected will be thrown out and jackets donated to the 2nd hand store.

Let's celebrate...

- Our courageous Year 5 students who nominated to be a leader for 2023!
- Our awesome staff and parents for attending our Year 6 camp in Warrnambool. Thank you

Sharon Reiss-Stone

Principal



9807 8120



mountwaverley.heights.ps@education.vic.gov.au



www.mountwaverleyheightsps.vic.edu.au



[Facebook.com/MtWaverleyHeightsPS](https://www.facebook.com/MtWaverleyHeightsPS)

Assistant Principal's Report

WELLBEING

EMOTIONAL LITERACY

Did you know ...

- There are 27 main human emotions.
- We experience at least 1 emotion 90% of the time.
- And frequently experience positive & negative emotions at the same time.

If you're interested in learning more about Emotional Literacy check out 'The Imperfects podcast'. In the below episode Dr Emily talks about the concept of Emotional Awareness, and explains why it's not only important to identify your unpleasant emotions, but why it's even more important to express them when they arise.

[Dr Emily - you are Not Your Emotions](#)

Below is a link to more of 'The Imperfects' podcast episodes on The Resilience Project website or you can listen wherever you listen to your podcasts.

<https://theresilienceproject.com.au/at-home/podcasts/>

Developing emotional literacy and emotions is a big job for school aged children. Playing with your child is an important part of practising their emotional skills – and sometimes just to let their emotions out. Play at school develops these skills but play at home and with parents plays an important and special role in a child's development. What you model in terms of regulating emotions, dealing with rules and managing emotions.

<https://raisingchildren.net.au/school-age/play-media-technology/play-school-age-development/emotions-play-school-age>

Talking about school and emotions

'How was school?' can be a big question for your child to answer. To answer, your child has to sum up a whole day of activities and emotions. That's hard for adults let alone children to do. There are many things you can do to get your child talking about school.

<https://raisingchildren.net.au/school-age/school-learning/school-homework-tips/talking-about-school>

Just a reminder that it is the last week to have your say as part of our SWPBS reflection.

<https://forms.gle/k37uuaJNwypX6fVz6>

Thanks to all of you who have provided feedback.

Carolyn Datson

Assistant Principal

Colour Fun Run

ONE WEEK LEFT TO RAISE MONEY FOR OUR SCHOOL

Last chance to make a difference! This is your LAST week to collect donations or donate yourself for our Colour Fun Run 🏃‍♂️ If you haven't already, let's kick off our fundraising efforts and make our kids goal for a fantastic new playground a reality 🎉💰 Fundraising closes Wednesday 22 November.

There is still time to register if you haven't already and still time to score some fantastic incentive prizes and raise more to help our school. We can't do it without your support. Even if each family raised just \$20 it would have such a huge impact on what we could do.

Register and fundraise at <https://myprofilepage.com.au>

Extra incentives

We've decided to add some extra class based incentives to encourage everyone to get involved.

Highest registrations:

The first three classes to simply register 80% of their class will win a zooper dooper for each student!

Highest fundraising:

The year level (grade) that raises the most money for the school combined will win a free dress day!

If you have any questions please reach out to the school.

HOW TO CREATE A MY PROFILE PAGE

1. Type <http://www.myprofilepage.com.au> into your internet URL search bar

www.myprofilepage.com.au Tip: Google Chrome is the preferred internet browser for the website.

2. Click Register to create a Parent log in

3. Create a Parent Log In

The parent/guardian sign up information to create a log into the website.



4. Create a Profile Page

1. Enter First and Last Name
2. Search your Group! You will need to type 4-5 letters of the group's Name for the group to pop up for selection.
3. Select Class
4. Click Next Step

5. Select your fundraising goal target! This can be edited anytime throughout the fundraiser. **CLICK CREATE PAGE**

Congratulations!

Your Profile Page is now created for your group! Check out your profile and make additional edits!

1. Create a Profile Avatar
2. Edit your fundraising story
3. Check out how you can earn bonus donations by clicking the coin chest
4. Share your page to friends and family! This is the only way to obtain donations for your group.
5. Self-Donate! This is submitting an online donation yourself to the profile

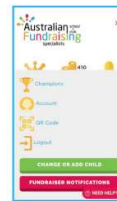
Can I create more profile pages?

YES! If you have more than 1 child, you can create additional profiles on the same parent log in.

1. Simply click the 2 horizontal lines top right if using a mobile device.
2. Click the Change/Add Child Button
3. Complete the Create a Profile Page again



Need Help? The team at Australian Fundraising can help between Monday-Friday 8am-4pm aest. Simply click the NEED HELP button and pop through a ticket for help.



HAPPY FUNDRAISING!

PE News

Cricket Gala Day

Written by Caitlin, Katarina, Aarna, Neil, Surya and Sam.



On Friday, the 17 November we went to the SDSSA Cricket Gala. The equipment was provided by Woolworths Cricket Blast. A selection of students in Year 5/6 attended the day and played four or five games in a round robin format. Overall we took 70+ wickets and over 1000+ runs. Our school had 4 teams, 3 boys teams with 8 students in each and the girls had 14 students. We did very well and won most of our games, we enjoyed it very much and made friends with the other teams. The schools that were participating were Glen Waverley, Pinewood and Burwood East. Our games took place at Lum Reserve. The girl's team played two games against Pinewood, two against Burwood East and one game against Glen Waverley.

We cheered for one another really loudly and supported each other in any way we could. The boys teams had some really tough matches. Team Two won one and Team Three won two. Team one versed teams that were exceptionally good at cricket. Unfortunately they didn't win any of their games but still put up an amazing effort. Overall we did really well and had lots of fun! All of the schools were very nice. They would congratulate us if we won and they would give us good luck for our next game. This was a great day and we had a lot of fun, we got amazing wickets and made amazing friends, I hope we get to experience something so fun next year as well!

The teachers and parents that attended were Miss Vujovic, Mr Marini, Christine and Georgette. Thank you all parents and teachers for attending and supporting us on our cricket day. We couldn't have had this amazing day without you! We would also like to acknowledge the other schools, as they played really well and with amazing sport



HOOPTIME GIRLS FINALS

On the 14th of November selected girls got the opportunity to participate in Hooptime (winning the first stage).

We started out playing Surrey Hills and were still adapting so we got smashed. The end score turned out to be 18-2 with Katarina scoring all of our points.

Next, we versed Essex Heights and won our first game. The score was 9-2 with Nela scoring 8 and Zoe scoring 1 as a free shot. However in the end we were all really proud of our efforts as a team.

Then we played against MLC and got absolutely demolished with an end score of 31-5. In the end Nela ended up scoring all our points.

After that, we versed St Doms where we lost 9-5 and again Nela scored all our points.

In our second last game we played against Camberwell and lost 20-11. Again Nela scored all our points.

And finally in our last game, we versed Essex Heights again in a consolation game where we lost 17-10. In the end, Nela scored 8 points and Zoe scored 2 free shots.

In the end, lots of people got hurt but we were all really strong and brave and we all persevered through the tough times.

We were all really proud of our efforts and some of our highlights included winning, eating lollies and just generally playing basketball.

We would all like to thank Mr Ryan and Mrs Molnar for helping us train and making this day possible. We would also like to thank Kelly Pountney, Jennifer Huynh and Darren Pountney for driving us to Nunawading and cheering us on no matter what.



Prep - Grade 2

The students have been working hard over the past few weeks on developing their 2 handed strike. Students have been using a foam bat, foam ball and hitting the ball from a tee. Students have been practising their fielding skills and overarm throwing and catching skills once the ball has been hit.



WHOLE SCHOOL SPORTS MORNING SAVE THE DATE!

All students will be participating in a whole school sports morning on **Thursday 14th December** between **9:00 - 11:00**.

This event is being held as Twilight Sports was cancelled due to bad weather in Term 1.

Parents are invited to come along and watch. Students can dress in their house colours for the day and they will compete in their houses with rotations through different athletic events.

Music News



Save The Date *Christmas Concert*

18th of December 2023

5 pm till 7 pm

**Details to follow
All are welcome!**

 **9807 8120**



mountwaverley.heights.ps@education.vic.gov.au



www.mountwaverleyheightsps.vic.edu.au



[Facebook.com/MtWaverleyHeightsPS](https://www.facebook.com/MtWaverleyHeightsPS)

Whole School

ANIMAL

DRESS UP DAY

When: Monday, December 4th (Week 10)

Why? Whole school reward for achieving 25000
dojo points!



9807 8120



mountwaverley.heights.ps@education.vic.gov.au



www.mountwaverleyheightsps.vic.edu.au



[Facebook.com/MtWaverleyHeightsPS](https://www.facebook.com/MtWaverleyHeightsPS)

Second Hand Uniform Shop

Did you know you can purchase 2nd Hand Uniforms at Mount Waverley Heights PS?

The 2nd hand uniform shop provides a valuable service to our school community, and to the environment. If your child/ren have outgrown their uniform and don't have siblings to pass them on to, please consider donating them to the 2nd hand uniform shop where they can be purchased at a heavily discounted price by other families in our community.

Simply send your clean items to school with your child and they will be sent to the office via the class tub each morning.

To Donate Uniform Items:

- Send items to school via the tub system or, drop them into the office
- All donated items should be freshly washed and in good condition
- Items should be free from stains, rips and tears
- Items should not be missing buttons and zips must work



To purchase 2nd hand Items:

- All items for sale are \$10 each
- Join the Mount Waverley Heights Primary Community FB page:
<https://www.facebook.com/groups/2926654220921706/>
- View the weekly post showing all available items
- Comment on the post if you would like to purchase – Child name/class/item/size
- Make payment via:
 - Bank Transfer (contact the school office and details can be given), use your child's name and class as reference.
 - Cash payment (correct amount please, no change given) in an envelope in the Tub. Include name and class on the envelope.
- Payments must be received by school no later than specified in the facebook post. Items not paid for by due date, will be returned to the available list for the following week.



Parent's Association News

Big discounts for the family!

Enjoy great savings on 500+ attractions and fun activities for your family, all year round across Victoria (and abroad)!

For just \$38.45 you can get an annual, digital membership for the family which offers **hundreds** of discount vouchers which makes eating out, birthday parties, school holidays, sports/art classes and other Melbourne attractions affordable for everyone. Some of the vouchers available include Village cinemas, Gold Coast theme park pass, Funfields, Gumbuya World, Lollipops, Boost Juice, and plenty more are added on a regular basis.



The best thing is if you use the link below then the school will get \$10 per membership purchased which makes for a great fundraiser. It won't cost you extra either. **Why not ask friends and relatives if they would like one, too or purchase one as a (Christmas) gift? The more we sell, the more money we make for our school and the kids benefit too.**

You can start using it immediately once signed up and have fun!

SIGN UP LINK: <https://smallideas.com.au/fundraisers/support/?id=30493>

Pro tip: Join their Facebook page to see the latest offers as they are regularly adding more.

For existing Small Ideas members:

Before you are due to renew your membership, please cancel the auto-renewal and rejoin with the school's link above so we reap the rewards. You can find your renewal date at the bottom of the homepage when logged in.

To cancel, please contact them via email or phone.

Phone: 1300 88 10 15

Email : info@smallideas.com.au

A big thank you for helping us raise money and supporting local businesses.

Parent's Association

Year 6 Icy Poles

What for?
For graduation!

When?
Tuesday and
Thursday
lunchtime!



ICY POLES!

How much?
one dollar

Extend News



**JOIN US FOR THE REST OF TERM 4
FOR OUT OF THIS WORLD FUN**



Extend is offering a galaxy-load of fun for the rest of Term 4! Participate in sustainability, outdoor activities, group games, arts and crafts, and countless other opportunities to create, play and bond! All housed in a warm and vibrant atmosphere.

Finish off your school term with Extend today!

Go to extend.com.au and join our super service!

 9807 8120



mountwaverley.heights.ps@education.vic.gov.au



www.mountwaverleyheightsps.vic.edu.au



[Facebook.com/MtWaverleyHeightsPS](https://www.facebook.com/MtWaverleyHeightsPS)

MOUNT WAVERLEY HEIGHTS PRIMARY SCHOOL

Monday 8 January to Monday 29 January
8.00am – 6.00pm
Session Fee \$90.95*
Please provide morning tea and a healthy, nut free packed lunch for your child.
*Early Bird Rate – Book 14 days in advance.



DISCOVER. LEARN. PLAY. SUMMER EXTEND SQUAD

FANTABULOUS school holiday experiences!

PAY FROM JUST \$9.10 AFTER CCS!

*CCS is applied to the full fee, including incursion and excursion costs, making it affordable for all families!



TABLOID SPORTS & PAPER ROLL SEAHORSE PUPPETS
Get ready for the tabloid olympics! Compete in a range of challenges and games to see who wins!

Session Fee Only



LEGO COLOUR HUNT & FRIENDSHIP BRACELETS
Treasure hunt with a twist! Find the missing LEGO blocks and match them with the correct colors, collect them all and you win!

Session Fee Only



FLY A KITE & BUTTERFLY CHROMATOGRAPHY
Gather your supplies and create your own beautiful kite, once it's complete, head outside and take to the skies!

Session Fee Only



SLIMY SEA CRAFTS
Explore the ocean depths with the gooey goodness of slime and let your creativity flow by creating layered sand art!

Session Fee + \$15



KIDS CLAY PINCH POTS & SURVIVAL TAG
Grab a fistful of clay, it's sculpting time! Create your very own pinch pot for home!

Session Fee Only



LEGO STAMPING & PANCAKE SPAGHETTI
Dip straight into the paint with your Lego pieces and make your best art work!

Session Fee Only



BACK TO SCHOOL
Start the school year in style! Bring your creative flair and design a lunch box, sustainable sandwich wrap and bag tag!

Session Fee + \$15



RACE TRACKS & YARN CRAFT
Make a car ramp! It's an amazing STEM activity that teaches through play.

Session Fee Only



INFLATABLES WORLD
Join us for a day at the Biggest Indoor Inflatables Playground in Australia! It's all about having fun with your friends.

Session Fee + \$45.25



GLITTER PAPER & GUITAR CRAFT WORKSHOP
Glitter makes everything special. Create your own glitter artwork with the help of your fantastic Educators!

Session Fee Only

MOUNT WAVERLEY HEIGHTS PRIMARY SCHOOL

Monday 8 January to Monday 29 January
8.00am – 6.00pm
Session Fee \$90.95*
Please provide morning tea and a healthy, nut free packed lunch for your child.
*Early Bird Rate – Book 14 days in advance.



DISCOVER. LEARN. PLAY. SUMMER EXTEND SQUAD

FANTABULOUS school holiday experiences!

PAY FROM JUST \$9.10 AFTER CCS!

*CCS is applied to the full fee, including incursion and excursion costs, making it affordable for all families!



ATHLETICS & WACRIES
Unleash your inner athlete in the ultimate test of fitness with events such as hurdles, running races and much more!

Session Fee Only



AFL
Take after your favourite footy stars and join your friends for an exciting game of AFL!

Session Fee + \$22



BOUNCE
Bounce is the perfect playground to develop your freestyle tricks these school holidays!

Session Fee + \$49.45



HULA HOOP RELAY & IN THE GARDEN
Grab some hula hoops and head outside! We're having a relay race.

Session Fee Only



PUBLIC HOLIDAY



HEADS, SHOULDERS, KNEES AND CANE ACTIVITY & SPONGE BOATS
Put your brain and body to the ultimate test with this game of reaction and fitness fun!

Session Fee Only



WHAT DO I NEED TO KNOW FOR SUMMER VACATION CARE?

DISCOVER. LEARN. PLAY. SUMMER
EXTEND SQUAD
FANTASTIC school holiday experiences!

What food should I pack for my child?

Please pack a healthy, nut free morning snack and lunch as you would for a normal school day. The service will provide a delicious and healthy afternoon snack.

Please ensure a refillable water bottle is packed for your child.

What should my child wear to vacation care?

Your child should wear long pants (trackies or leggings), a shirt that covers their shoulders (no singlets), a hat and a warm jacket if it is cold. Your child must also wear closed shoes (no thongs or sandals).

If the children are doing art or a messy activity, please wear old clothing or pack an art smock.

What if I have a question about Child Care Subsidy?

We are approved to process your Child Care Subsidy payments from the federal government. However, we are not in control of how much subsidy is paid by the government to each family.

If you have questions about Child Care Subsidy please contact Services Australia on 136 150.

Can my child attend services in a different state?

If you are enrolled with Extend, you can attend an Extend service anywhere in Australia where a service is available.

You do not need to regularly attend the school itself to attend a holiday program. All primary school aged children are welcome.

Where do I find excursion bus times?

If you have already booked your vacation care sessions, log in to your LookedAfter account, go to your booking calendar and click on the excursion session. Information regarding the session will pop up and you will find the bus time listed under 'Service'.

If you are booking a session, follow the usual booking process. You will find the information under 'Service'.

How will CCS help you save money during vacation care?

CCS covers up to 90% of the session fee, incursion fee and excursion fee based on the household income.

For example, a family eligible for 64% CCS will only pay 36% of the remaining session fee. This means for a 10 hour session costing \$100, the family will pay the gap fee of \$36 with the remaining \$64 covered by CCS. That's \$3.60 per hour!



9807 8120



mountwaverley.heights.ps@education.vic.gov.au



www.mountwaverleyheightsps.vic.edu.au



[Facebook.com/MtWaverleyHeightsPS](https://www.facebook.com/MtWaverleyHeightsPS)

GENESIS MUSIC SCHOOL

MUSIC LESSONS

Want to learn how to play an instrument? Sign up now!

CALL 0421 426 674 FOR ENQUIRIES

ENROL
GENESISMUSICSSCHOOL.COM.AU

Learn at your own pace and improve your skills in playing various instruments under the guidance of our expert musicians.

The Social Domain
Skills For Life

SOCIAL SKILLS HOLIDAY PROGRAM

Run by Speech Pathologists

Group 1 5-7 years **Group 2** 8-11 years

Dates: Wednesday 10th and Friday 12th of January

📍 **64 Glenferrie Road, Malvern**

Topics Covered

- ✔ Conversation Skills
- ✔ Perspective Taking
- ✔ Forming and Maintaining Friendships
- ✔ Handling Teasing and Bullying
- ✔ Problem Solving and Reasoning
- ✔ Resilience and Managing Feelings

📞 1300 950 992 ✉ hello@thesocialdomain.com.au

Summer HOLIDAY COURSE

8 - 19 January

NAPLAN Preparation

- Date: 8 - 19 Jan (Mon - Fri, 10 days)
- Detail: Foundation + Public Speaking + NAPLAN Practice Test + Computer based NAPLAN Trial Test

Year **3 & 5** In 2024

Scholarship Preparation

- Date: 8 - 19 Jan (Mon - Fri, 10 days)
- Detail: Foundation + Public Speaking + ACER & Edu style Trial Test (Video Explanation)

Year **4 & 6** In 2024

Selective School Preparation

- Date: 15 - 19 Jan (Mon-Fri, 5 days)
- Detail: New ACER style Selective Trial Test + Lesson

Year **8** In 2024

Timing for all above classes is from 9 am to 3.30 pm (8.5 hours with breaks). Free after class care service available from 3.30 pm to 5 pm for working parents.

Computer based Trial Test
Unique 5 Steps System

- 1 Trial Test
- 2 Report
- 3 Review the test
- 4 Report Analysis
- 5 Repeat Instruct Questions

CS Education 📞 **0481 841 415**

Oakleigh Campus 📍 3/6 Atherton Road, Oakleigh, VIC 3166

📧 oakleigh@cseducation.com.au

34 Branches in Australia www.cseducation.com.au

AUDITION for the Australian Youth Choir 2024.

Enrolments for 2024 are now open to boys and girls from 8 years of age.

An opportunity to develop:

- singing
- musicianship; choral repertoire
- confidence
- self-esteem
- new friendships

Weekly rehearsals in Canterbury during school Term with concerts included in the year.

AUDITION NOW FOR 2024

Appointments are available throughout December by contacting us on:

EMAIL: office2@nivpaa.com.au

CALL: 98362877 (leave a message for a return call)

Est. 1975, the Australian Youth Choir is a division of National Institute of Youth Performing Arts Australia (NIYPAA) ABN 28 007 124 629

CHRISTMAS TREE SALE!



- *Freshly Cut*
- *Various sizes available*
- *Prices from \$55*

1st West Waverley Scout Group Fundraiser

All monies raised will go towards repairing our Scout Hall roof and lighting.



**25 Nov to 17 Dec 2023
(SAT & SUN ONLY)**

9am to 3pm,
or until sold out.

**Mount Waverley Heights
Primary School car park**

Entrance next to 546
Huntingdale Road, 3149



VISIT:

<https://1stwestwaverleyscouts.com.au/> or scan the QR below.



 9807 8120



mountwaverley.heights.ps@education.vic.gov.au



www.mountwaverleyheightsps.vic.edu.au



Facebook.com/MtWaverleyHeightsPS