

Dates To Remember

TERM THREE

Monday 17th July
Assembly - 2.40pm

Wednesday 26th - Friday 28th July
Year 5 Narmbool Camp

Wednesday 26th July
Book Club DUE

Friday 28th July
100 Days of Prep

Monday 31st July
Assembly - 2.40pm

Wednesday 2nd August
School Council 6pm

Monday 7th August
Hooptime - selected Year 3 and 4 students

Monday 7th - Friday 11th August
ICAS - Digital Technologies

Tuesday 8th August
Year 1 excursion - Museum of Play and Art

Wednesday 9th August
Prep Incursion - Toys in Motion

Monday 14th August
Assembly - 2.40pm

Monday 14th - Thursday 17th August
ICAS - English

Thursday 13 July, 2023

WELCOME BACK!

We hope you enjoyed the past couple of weeks with your children. It was rather a cold and chilly holiday, but it was still lovely to have some time off.

BEACON SCHOOL GRADUATION

On the last day of Term 2 we celebrated our Beacon School Graduation with a special tech day and assembly. We were also awarded this very special trophy to recognise our achievements. A big thank you to Datacom, hp and google.



Datacom and Hp are sponsoring National Tree Day, as they strive to develop more sustainable practices. As such, we are the recipient of some funds for plants. National Tree Day will be celebrated on Friday August 4th. More details to follow.

CURRICULUM DAY

On Monday, whilst families were enjoying an extended mid year break, the teachers were busy working with Dr James Russo (Senior Lecturer, School of Curriculum, Teaching and Inclusive Education). James is best known for his work in mathematics. We had a great day exploring challenging maths tasks and working on our school's pedagogical approach. The teachers are excited to incorporate these ideas into their practice.

PORTABLES

Finally - we have all relocated! The year 6s have moved into the portables and 3J have moved to the classroom off the library.



YEAR 5 CAMP TO NARMBOOL

Our Year 5 students will be heading to camp Narmbool, from July 26 to July 28. Students will visit Sovereign Hill before arriving at their campsite. Environmental science and Australian history is the main focus with students having the opportunity to spend time on a working farm.

WORKS COMPLETED

- Holes in the Solomon St car park were repaired over the holidays.
- Air conditioning/heating units added into the PAC
- Gates and fences installed around the portables

EXTRA-CURRICULAR ACTIVITIES

Just a reminder that Kids Unlimited are running Chess Club on a Monday lunchtime from 1.30-2.30pm and a Science Club afterschool on Wednesday from 3.30-4.30pm. If you would like your child to join, please refer to page 7.

LEAVE

Currently we have Masa Yamazaki on Long Service Leave for the next four weeks. Masa is travelling back to Japan to spend time with family. Something he hasn't been able to do for many years.

I will be taking Long Service Leave from Friday 21 July to Aug 2nd. I will be heading to Bali (with my family) to enjoy some warmer weather. Carolyn Datson will be Acting Principal in my absence.

REMINDER - ASSEMBLY

This coming Monday we have our first assembly for Term 3, at 2.30pm. Just a reminder that you will receive a Sentral notification if your child is receiving an award. We love having parents attend our assemblies. If you are free, please join us on Monday.

Let's celebrate...

- A great start to Term 3!
- Students moving into their new classroom spaces

Sharon Reiss-Stone

Principal

Assistant Principals News

Welcome Back! We hope everyone had a great holiday and we are looking forward to a bumper term!

As we come back to school, students start to work with friends again and continue to build relationships. Sometimes students can find friendships challenging or have to navigate tricky situations. Social and emotional learning can assist students with building strategies to make and maintain friendships. Friendships also help children develop important life skills, like getting along with other people and sorting out conflicts and problems.

We focus on building resilience in our wellbeing sessions. The Resilience Project, SWPBS (School Wide Positive Behaviour Support) and Respectful Relationships are all incorporated into the wellbeing hour. Our SWPBS teaching matrix and behaviour expectations have resilience embedded throughout.

Kids Helpline has a good section about building resilience. It includes what it is, what helps to develop it and what to do when facing a challenge.

Building social and emotional skills are an important part of growing up, they help promote mental health.

As adults and parents, it is important to model resilience to our children.

We can do this by:

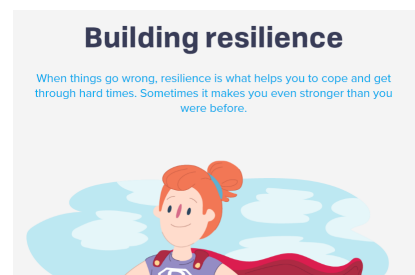
- Using positive self talk
- Making mistakes but accepting that it is ok and moving on
- Working towards goals and sticking with them, no matter how challenging it may become
- Accepting change
- Asking for help, when you need it.

If you would like to read more, you can find it on the Kids Helpline site.

<https://kidshelpline.com.au/teens/issues/building-resilience>

Carolyn Datson

Assistant Principal

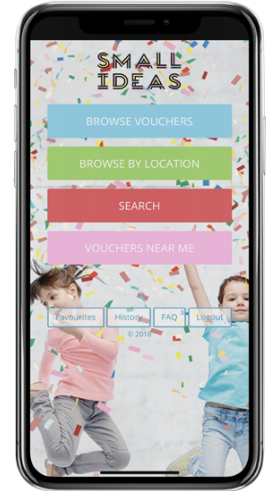


PA News

SMALL IDEAS – HUGE FAMILY SAVINGS

Small Ideas is the best way for you and your family to have hours of FUN and ADVENTURE all year long.

For just \$34.95 you can get hundreds of discount vouchers to use at venues, for activities and products and services all over Melbourne, making eating out, birthday parties, school holidays, sport/art classes and other Melbourne attractions affordable for everyone. Some of the vouchers include discounts for Village Cinema, 3 Park Theme park pass on the Gold Coast, Funfields, Gumbuya World, Lollipops, Boost Juice, and plenty more.



Have you got a trip planned to Bali? Small ideas have got you covered!!!

Everyone who buys Small Ideas loves it and more importantly \$10 of each one sold goes towards our schools fundraising efforts. Why not ask friends and relatives if they would like one, too? The more we sell the more money we make.

Please make sure you purchase one from the Link provided below and you'll receive an email instantly so you can start saving and having fun!

<https://smallideas.com.au/fundraisers/support/?id=30493>

Thank you for helping us raise money and supporting local business'.

A promotional banner for Small Ideas. At the top, the 'SMALL IDEAS' logo is displayed. Below it is a red navigation bar with a 'MENU' icon on the left and 'LOGIN' on the right. The main part of the banner features a photograph of a young child with red hair, wearing a white shirt with a daisy, giving two thumbs up. Overlaid on the photo is the text 'BIG SAVINGS FOR SMALL PEOPLE' in large, bold, white letters. At the bottom of the banner, on a red background, it says 'AUSTRALIA'S NO.1 MEMBERSHIP FOR FAMILIES!' and includes a white button with the text 'ORDER NOW' in green.

Recycle your Bread bags!!

Collection date extended, so keep sending in your bread bags!!

Send in your empty bread bags and place them in our Wonder Pink collection box. The more we collect, the more points we earn to redeem new sports equipment! We have a Pink box collection point in the office.



 9807 8120



mountwaverley.heights.ps@education.vic.gov.au



www.mountwaverleyheightsps.vic.edu.au



[Facebook.com/MtWaverleyHeightsPS](https://www.facebook.com/MtWaverleyHeightsPS)

Extend News

EXTEND IS LANDING INTO TERM 3 WITH EXTRAORDINARY FUN!



Term 2 has been a wild ride! Now it's time to strap in and continue the extraordinary journey with Term 3! Join Extend and land into the new term with style!



With a few materials and a splash of imagination, you can create a beautiful bouquet of colourful flowers!



Try your hand at making a rainbow themed artwork with water paints and a trusty palm!



Make the most of those colourful fallen leaves in the winter time and design your own nature craft project!

Drop into a new fun-filled term with Extend!
Make your bookings today at extend.com.au

GENESIS MUSIC SCHOOL

MUSIC LESSONS

Want to learn how to play an instrument? Sign up now!

CALL 0421 426 674 FOR ENQUIRIES

ENROL
GENESISMUSICSCHOOL.COM.AU

Learn at your own pace and improve your skills in playing various instruments under the guidance of our expert musicians.

Extra-Curricular Activities at Mt Waverley Heights Primary

ENROL ONLINE NOW!

CHESS

- Mon, 1:30 - 2:30 pm
- Starts on 17 Jul
- Run for 8 sessions
- For Years 1-6
- Room: Year 4 classrooms

SCIENCE

- Wed, 3:30 - 4:30 pm
- Starts on 19 Jul
- Run for 8 sessions
- For Years 1-6
- Room: Art room

Chess is the original and enduring "thought sport" played throughout the world and has many benefits for young people. These include improved cognitive skills as well as self confidence and resilience. With coaches who rank among the best players in the country our chess programs are tailored to suit the needs of all abilities.

For curious minds only, the science program is a way to extend young people outside of the classroom. Our passionate coaches will engage and enthuse students with a range of exciting science based lessons ranging from astronomy to chemistry and physics. The hands on approach to learning will ensure a memorable experience.

CONTACT US FOR TRIALS

Scan or click the QR code to enrol online!

Kids Unlimited
 info@kidsunlimited.com.au
 www.kidsunlimited.com.au
 1300 424 377

vida tennis

Kids Hot Shots Lessons

For kids of all ages and adults

Book in for Term 3 tennis with us!

REGISTER NOW

Term Dates
 Monday, 10th July 2023 to Friday, 15th September 2023

FREE Intro Lessons Available For Kids and Adults

<https://www.vidatennis.com.au/free-intro/>

Contact Us
 Angelo
 angelo@vidatennis.com.au
 0407 477 798

MCC Glen Iris Valley Tennis Club
 260 High Street Rd
 Mount Waverley, VIC