

# The Heights Happenings

Thursday 28 February 2019



MOUNT WAVERLEY  
**HEIGHTS**  
PRIMARY SCHOOL

Dates to remember

## **TERM ONE 2019**

**Thursday 28th February**

Think U Know Session 6:30pm

**Monday 4th March**

Preps start FULL TIME

Assembly 2:45pm

**Friday 8th March**

Teddy Bears Picnic 2pm

**Monday 11th March**

LABOUR DAY PUBLIC HOLIDAY

**Thursday 14th March**

Twilight Sports 5:30 – 7pm

**Wednesday 20th March**

School Council – AGM 6pm

**Friday 22nd March**

SDSSA Athletics Carnival Year 5/6

**Monday 25th March**

Dental Van – ALL WEEK

**Thursday 28th March**

PB BBQ

**Monday 1st April**

End of term assembly 9am

**Friday 5th April**

Last Day TERM ONE 2:30pm

Easter Raffle

Assembly 2:00pm

## **TERM TWO 2019**

**Tuesday 23rd April**

First Day Term Two

**Thursday 25th April**

ANZAC DAY – Public Holiday

**Monday 29th April**

Assembly 2:45pm

**Tuesday 30th April**

School Photos

**Wednesday 8th May**

School Council



Refer to the website for Notices

<http://mountwaverleyheightsps.vic.edu.au/parent-information/>

## TONIGHT!

**THINK YOU KNOW SESSION - DON'T MISS OUT. ONE OF THE BEST SESSIONS YOU CAN ATTEND AS A PARENT!**

Our school will be hosting a ThinkUKnow presentation on tonight **Thursday Feb 28 (6.30-8.00pm)** and all parents and carers are encouraged to attend.



ThinkUKnow Australia is a cyber safety education program that educates parents, carers and teachers of how people are using technology, the challenges they may face online, and how to help them overcome these in a safe and ethical way.

ThinkUKnow Australia is a partnership between the Australian Federal Police, Microsoft Australia, Datacom and the Commonwealth Bank. The program is delivered in collaboration with policing partners Victoria Police, New South Wales Police Force, Northern Territory Police, Queensland Police, South Australia Police, Tasmania Police, Western Australia Police, as well as Neighbourhood Watch Australasia.

The presentation will be delivered by a local law enforcement member and an industry volunteer. The presentation covers issues relating to children and young peoples' privacy and security online, their relationships with other users and their online reputation. It provides insight into the devices young people are using, as well as the popular websites, apps and social networking sites they're accessing.

This is a fantastic opportunity for you to learn more about young people and the online environment, and how you can help them to be safe and responsible users of technology.

For more information, you can visit [www.thinkuknow.org.au](http://www.thinkuknow.org.au)



9807 8120



9888 1921



Facebook.com/MtWaverleyHeightsPS



Mountwaverley.heights.ps@edumail.vic.gov.au



Mountwaverleyheightsps.vic.edu.au

### **Year Prep-6 Information Exchange**

Thank you to everyone who came along to the Information Exchange (Parent/Teacher Interview) night last Thursday. Please remember, that if you have any concerns regarding your child's learning or social/emotional development, please make an appointment with your child's classroom teacher as the issues arise. It is best not to delay, so that we can address concerns in a timely manner.

### **TWILIGHT SPORTS - WHOLE SCHOOL SPORTING EVENT**

Our annual House sports will take place Thursday March 14 from 5:00 -7pm. We invite parents, grandparents, family and friends to our whole school event. This year the Parents Association will be selling sausages, hamburgers, drinks and icy poles. We are after parents to assist with the bbq. If you are able to help, even if it is only for 20min, it would be much appreciated. Please see the flyer insert in this newsletter to register your help.

Families are also welcome to bring their own food. The races and novelty events will take place from 5:45pm-7pm. We will conclude the night with a parent tunnel ball event. **We encourage all students and their families to come dressed in their child's House Colors.**

### **BRIDGES, STA & EAL PROGRAMS**

A couple of years ago we trained all our Integration Support staff in the 'Bridges' intervention strategy. Like Reading Recovery, this strategy is a fantastic intervention approach focused on improving reading and comprehension skills. Training all our Integration staff in this approach, has meant that we are able to provide more students with one to one support. Six students have been selected to begin the first round of additional support, each student receiving two individualised lessons each week for a period of eight weeks. We are currently targeting the Year 1/2 students.

Alongside Bridges, we are once again providing STA (Speech Therapy Assistance) which is supported by Jessica Linnell (Speech Pathologist). Jess works with two Integration Support Staff who have been trained in STA to run the program. Jess selects the students based on a range of assessments and students participate in small groups developing their oral language and phonological awareness skills. We will be once again offering this program.

EAL – English as an Alternative Language. Our EAL classes began last week supporting a range of students in both the junior and senior school who have limited English skills. These lessons help build confidence and provide a positive support network with others in a similar situation. They also learn crucial English skills that will support their classroom learning.

We truly have an amazingly talented and dedicated Integration Support team!

### **TEDDY BEARS PICNIC – Friday March 8 from 2.30pm**

We will once again be holding our special 'Teddy Bear Picnic' event on Friday March 8 from 2.00-3pm. We are encouraging our preps to bring along their favourite teddy bear for an afternoon of fun and games. Our local pre-schoolers and kinder kids have been invited along too! If you have a 3 or 4 year old child, you are welcome to come along too!

### **We need your old phones AND their charges!**

If you have recently upgraded your phone and no longer need your old one, we would love to reuse it as part of our technology upgrade. Donated phones (smart phones) will be used in VR devices and run off our school's network. If you are able to help out, please drop them in at the office. Thank you

### **Twilight Sports. Can you help?**

The Parents Association will be selling drinks and BBQ food at the Twilight Sports on 14th March. Please show your support by assisting on the stall – "many hands make light work". Whilst you are cheering your child on, please consider helping to raise funds for our school by giving 20 mins of your time, (or your partners!) on the night to either cook sausages or sell drinks. If you are new to the school, it will be great to meet you.



9807 8120



9888 1921



Facebook.com/MtWaverleyHeightsPS



Mountwaverley.heights.ps@edumail.vic.gov.au



Mountwaverleyheightsps.vic.edu.au

## **INTERNATIONAL WOMEN'S DAY 2019: #BalanceforBetter**

Next week is International Women's Day, so I thought it would be good to highlight some of the amazing girls who are making a change to better the world/lives around us.

### **Macinley Butson, 17, inventor**

Macinley won the 2017 INTEL International Science and Engineering Award, the first Australian to do so, for her invention of Smart Armour – a shield to protect the non-treated breast of cancer patients undergoing radiotherapy treatment. She is 2018 NSW Young Australian of the Year and a national youth ambassador with environmental group Green Cross Australia.



"I came up with the idea for Smart Armour after a conversation over the dinner table. Dad works in medical physics and he mentioned that the other breast that isn't being treated receives excess radiation and this can cause side effects, like skin burning. I was in Year 10 and I couldn't understand why there wasn't already something to shield the breast from all this radiation – you know, it's a bit of a no-brainer. So, I decided to do something about it."

### **Molly Steer, 10, environmental campaigner**

When Molly was nine she started Straw No More - and in one year has convinced more than 90 schools in Australia and overseas to do away with plastic straws, and has persuaded Cairns Regional Council to get rid of single-use plastics.

"My mum said, 'When you start something, it's always best to start small.' Straws seemed pretty small. So, I said I was going to stop using them. And then I asked my friends to do the same thing, and my whole school took it on. Then other schools in town heard about it. When I started the Straw No More project, it was just meant to be at Cairns schools. But really quickly, schools from all over Australia and even overseas started getting in touch. I spoke to a lot of schools, and then I was asked to do a TEDx talk. Then more schools signed up, businesses too."



### **Maternity Leave**

We would like to wish Emma and her husband Andrew (Thomas) all the very best for the safe arrival of their second child. Monday will be Emma's last day at work. We are looking forward to welcoming and meeting baby number 2!

Until next week,

## Sharon

Sharon Reiss-Stone

## Parent Helper Induction Information

Thanks again to the parents who attended the induction. It is always handy to have a refresher and meet some other parents at the same time. If you were unable to attend the induction for parent helpers, here is a very quick recap:

## **Our teaching and learning framework**

Our lessons follow the REACH framework and is visible in all our classrooms.

## **Ways you can help out:**

Sport days/ literacy and numeracy lessons/ excursions/ incursions/ swimming/ school events

## **Your role in the classroom**

Parent helpers supervise and assist with activities:

- Check the students know what to do
- Assist them in getting started
- Talk through what they need to do
- Model good speech
- Help keep students on task
- Ask questions

## **Literacy/ reading:**

If helping in the literacy block with reading we would like you to use the 3P's.

**Pause:** If a mistake occurs, pause; wait to give the student a chance to solve the problem.

**Prompt:** Give a hint or lead to encourage an answer.

**Praise:** Use a variety of praise and encouragement for the student's efforts.

You must have a working with children's check and a signed child safe code of conduct. We also covered our OHS induction. Please see our office for the OHS induction and child safe forms.

## **Final reminders:**

- Encouragement is the key word – praise effort, involvement and success
- You may not be working with your child, but they will enjoy having you in the room
- Behaviour issues should be directed to the teacher
- Not all children learn at the same rate and you will see the range of abilities and understanding
- Privacy and confidentiality is very important
- Working With Children's Check and a signed Child Safe Code of Conduct

We love to see helpers in our literacy block but speak to your teacher if you have other times available that you would be able to help in the classroom. If you have any questions about helping at our school please contact Sharon or myself.

Thanks

*Carolyn*

Carolyn Datson

Assistant Principal

## LEARNING AND TEACHING FRAMEWORK

**R** revisit

**E** xplicit teaching

**A** pply & Assess

**C** hallenge thinking

**H** ow will they share their learning?



9807 8120



9888 1921



Facebook.com/MtWaverleyHeightsPS



Mountwaverley.heights.ps@edumail.vic.gov.au

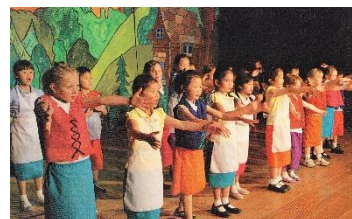


Mountwaverleyheightsps.vic.edu.au



## Drama Club

Drama Club will begin Monday 25<sup>th</sup> from 3:30pm – 4:30pm in the Art Room portable for Year 1 to 6 students. During the classes children will gain a good insight into all genres of theatre. There will be a mix of dance, drama and singing specially formulated to bring out every child's true potential. As well as having fun in the classes, your child will enjoy the benefits of greater confidence, improved concentration and an increased awareness of what they can achieve. There are places still available for the remainder of Term One. Please contact Ceila on [celia@planet359.com](mailto:celia@planet359.com)



## Seesaw

It has been fantastic to see how many parents have already downloaded the free Seesaw family app and connected to their children using the individual QR code that was sent home at the Parent information nights. The Specialist Team has been busy uploading photos and videos of the children to give you an insight into our programmes. If you haven't yet joined Seesaw please take the time to do it so that you don't miss out on the opportunity to see the fabulous activities they participate in during Specialist classes.

## Instrumental Music Lessons with Genesis Music.

Instrumental Music lessons on Fridays are in full swing with our new teacher, Miss Caitlin Thomas from Genesis Music. Caitlin is teaching drums, guitar and keyboard and is pictured here with Emma and Alexander during their keyboard lessons.

If your child would like to learn a woodwind instrument we will have a specialist woodwind teacher starting shortly so please collect an enrollment form from the office.

It is very exciting to see the programme already going from strength to strength. We look forward to seeing their performances in future assemblies.

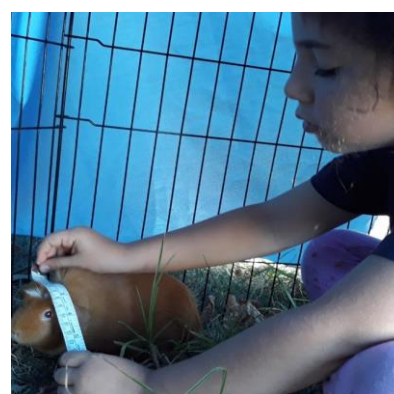


## EXTEND UPDATE

### What's Been Happening?

Wow, What an amazing week we've had so far! As usual we started the week off with a cooking activity and this weeks cooking activity was pita chips, which was requested by Harry B, and now we wish we could eat these every week! Thanks Harry for your tasty suggestion.

Our Extend families know that every week we have a new 'Question of the Week', where children and families can vote on a range of different opportunities and experiences we have going on in the service. Last week our question was about what type of slime the children wanted to make, which resulted in us making Floam slime on Wednesday, but if it were up to the children, we would be making slime every day because of how much they love it!



*Last weekend our Mascots slept over at Zoe A's house, and whilst they were there, they were pampered with a custom fitting. A bonnet for Marshmallow and a petite bow for Brownie, all hand crafted by Zoe and her Mum, Ariella. How beautiful!*

### The Extend Superstar is...

William Hetherington from 1/2J, for always being polite and using beautiful manners with everyone you cross paths with. Sometimes it's the small things that make a huge difference! Keep it up Will!

### Coming up next week:

Monday	Tuesday	Wednesday	Thursday	Friday
<b>Around the world:</b> Japan! <b>Cooking:</b> Veggie Sushi	<b>Dream Time Program</b> & Indigenous Game - Woggabaliri	<b>Science:</b> Crystal Cherry Blossoms & Ball Sports	<b>Art:</b> Origami Creations & Playground	<b>Community:</b> Pen Pal Letter w/ St. Joseph & Group Games

From Jayde & the children.

**Enrol and book now: [extend.com.au](http://extend.com.au)**



9807 8120



9888 1921



Facebook.com/MtWaverleyHeightsPS



Mountwaverley.heights.ps@edumail.vic.gov.au



Mountwaverleyheightsps.vic.edu.au



# Time to DANCE!



**ALL IN ONE CLASS**  
Weekly class includes ballet, gym, singing, acting & more

**FREE TRIAL**  
First two classes free! Register your interest below. Ages 3+

**CLASS OPTIONS**  
Classes held Wednesday & Saturday in Oakleigh

TINY TOTS:	3 – 4 years	Saturday, 9 – 10am
TINIES:	5 – 7 years	Saturday, 9 – 10.30am & Wednesday, 4 – 5.30pm
SUB-JUNIORS:	10 years & under	Saturday, 10.45am – 1.45pm
JUNIORS:	13 years & under	Wednesday, 5 – 8pm

Give it a go! ✂

Phone: Kathryn on 0400 871 170  
Email: [info@emmanuelcalisthenics.com.au](mailto:info@emmanuelcalisthenics.com.au)

**DISCOUNT COUPON**  
**\$50 OFF**

Mention this ad to receive \$50 off your first term fees  
Promo code: [JOINUS19](#)




## nab AFL Auskick

### Register Now!

**Oakleigh District**  
Princes Hwy Reserve Dandenong Road Oak East

Sunday 10.00am - 12pm Starts April 28th

Pat McGlenchy  
[Pat.McGlenchy@anz.com](mailto:Pat.McGlenchy@anz.com)

Visit [play.afl/auskick](http://play.afl/auskick)

[f](#) [i](#) [t](#) [t](#)



**MELBOURNE VFL**  
**2 DAY JUNIOR BASKETBALL CAMP**

**\$175**

**WAVERLEY BASKETBALL STADIUM**

Monday 15th & Tuesday 16th April  
Corner Batesford Road & Power Avenue, Chadstone

[soda stream](#) [Tyrepower](#) [TROJAN](#) [Dreamstreet](#) [dodo](#) [NEW AGE](#) [Chris](#) [A](#) [Bulla](#) [Woolworths](#)

**BRENTWOOD SECONDARY COLLEGE**

1969 **50<sup>TH</sup>** 2019  
**ANNIVERSARY**

**LIVE OUTDOOR CONCERT**  
**TWILIGHT MARKET AMUSEMENTS**  
**HISTORICAL PHOTO DISPLAY FOOD TRUCKS**  
**FRIDAY MARCH 15 5PM-9PM**

**GOLD COIN DONATION**  
**ENTRY VIA HEATH ST**

**B**  
BRENTWOOD SECONDARY COLLEGE



# **TWILIGHT SPORTS**

## **14TH MARCH, 5-7PM**

Come along and watch the kids participate in some fun races and wear your runners to join in the adults tunnel ball comp! Don't forget to wear your team colours!

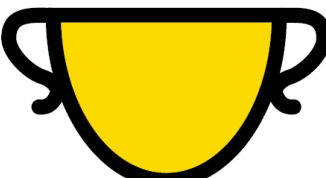
BYO picnic dinner or make it an easy night and grab something from our BBQ! Sports start at 5:30pm, so come and join in some social time before cheering on the kids!

---

**SAUSAGES \$2.50**  
**HAMBURGERS \$2.50**  
**DRINKS \$2.00**  
**ICY POLES 50C**

**VEGETARIAN & GLUTEN FREE OPTIONS AVAILABLE**

**PLEASE SIGN UP TO HELP OUT AT THE BBQ FOR 20 MINS**  
**AT [HTTP://SIGNUP.COM/GO/LPNXBSP](http://signup.com/go/LPNXBSP)**



9807 8120



9888 1921



Facebook.com/MtWaverleyHeightsPS



Mountwaverley.heights.ps@edumail.vic.gov.au



Mountwaverleyheightsps.vic.edu.au