

The Heights Happenings

Thursday 13 September 2018



MOUNT WAVERLEY
HEIGHTS
PRIMARY SCHOOL

Dates to remember

Principal's Report

TERM THREE 2018

Thursday 13th September

Nara Presentation Night 5pm

Friday 12th October

World Teachers Day

Monday 17th – Thursday 20th September

School Swimming Program

Monday 17th September

End of Term Assembly 9-10am – Prep D

Friday 21st September

Footy Day / Subway Lunch

Reading Data Movie morning 9:30-11am

Last day of Term Three – 2:30pm finish

TERM FOUR 2018

Monday 8th October

First day of Term Four

Wednesday 10th October

Monash Waverley Athletics (Yr 4-6)

Friday 12th October

World Teachers Day

Wednesday 17th October

Technology Information Night

Thursday 18th October

Japanese Celebration Day

EMR Athletics

Friday 19th October

SDSSA Summer Sports Round 1

Prep Transition 1

Wednesday 24th October

School Council 6pm



Refer to the website for Notices

<http://mountwaverleyheightsps.vic.edu.au/parent-information/>

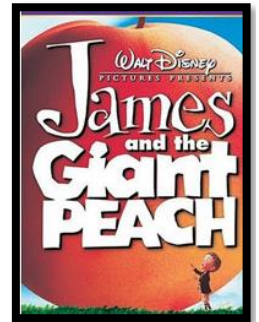
**Launching our technology
partnership October 17!**

END OF TERM ASSEMBLY

Just a reminder that our special end of term assembly will be held on Monday from 9-10am. All parents welcome.

READING DATA

On Friday 21 September we will be inviting those students, who have consistently read 5 nights a week over the term, to a special movie. As we are celebrating books, we have decided to pick a classic movie based on a very famous and well-loved story. We will be watching James and Giant Peach which is rated PG. Notices were sent home today. Congratulations to all who have been reading each and every night.



SWIMMING WEEK

Our first week of swimming went well. The students were super excited to participate in our school swimming program. Thank you to all the parents who volunteered their time and assisted classes down at the pool. For some students it is a lesson of organisation and responsibility - as they try to avoid losing clothing items! Students will be more tired than usual and it might be a good idea to cut down on afterschool activities over the coming week.

In order to assist the children in the change rooms after their lesson, you must have a current **Volunteer** Working with Children's Check (WWCC) and a signed Child Safe policy. If you are coming down to the pool to watch or help for the day **no photos or video** are to be taken at the pool.

NARA NIGHT

We invite all our Year 4 students and their families to our special 'Community Placement Project' night tonight. It is a fantastic opportunity for our students to share their learning and engage with our local kinder. The night begins at 5pm.

Thank you to our Year 4 teachers who prepared the students and coordinated the writing project. Thank you also to Helen for printing and binding a copy for each child. The picture story books are truly beautiful and a great memento for the kinder kids.



9807 8120



9888 1921



Facebook.com/MtWaverleyHeightsPS



Mountwaverley.heights.ps@edumail.vic.gov.au



Mountwaverleyheightsps.vic.edu.au

FOOTY DAY – Friday September 21

Don't forget to come dressed up in your favourite sporting team colours. If in doubt – just come wearing black and yellow! A Subway order form was sent home this week. Please ensure that you return this form by **FRIDAY 14th SEPTEMBER** (sorry no late orders can be accepted). Parent helpers are required to assist with the sporting activities organised for the day. If you are able to help out, please see Carolyn.

PORTABLES BEING REMOVED

The portables which were used to decant students for the new building works, will be removed these holidays. They will be taking the double portable (which previously housed Year 1/2 students). The Art/Music room portable will be removed at a later stage. I am still awaiting dates and times. During this process, parents may need to park on the surrounding streets and walk their child/children into the Holiday Program. Contractors will be liaising with the staff at Extend to ensure safety.

YEAR 3/4 CAMP TO GUNDIWINDI - OCT 10-12

Not long now, till our Year 3/4 students head off to camp. Mrs Geddes (Wed/Thu), Mrs Douglas, Tracy and myself (Thu/Fri) will be the teachers attending camp. Thank you to the following parents: Charmaine Bacon, Darren Pountney and Aaron King for volunteering to attend. We look forward to a wonderful time away.

TECHNOLOGY INFORMATION NIGHT - A night for all, but particularly important for 2-5 parents.

On **Wednesday October 17**, we will be launching our partnership with a special information evening for families. We are expecting families from Year 2-5 to attend, so our school community can be prepared and informed of the exciting opportunities provided.

At the information session, you will be provided with the opportunity to trial the technology, understand your responsibilities and additional conditions, ask questions and meet our partners. Additional information will be sent home next week.

EXTEND WINNERS

Congratulations to MWHPS Extend who won the Kids Club Competition! The service has won a free incursion. A great result by Extend and all the students who attend.

CURRICULUM DAY

Our last Curriculum Day for this year will be held on Monday 5 November. No students are to attend school on this day.

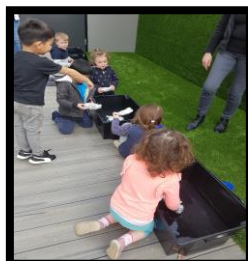
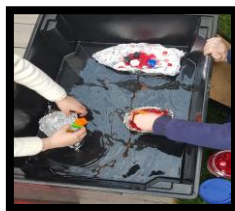
Let's celebrate

- A fantastic turnout to our final Piece Together Prep Session. Thank you to Carolyn for organising the activities. The students loved making their own boats and testing a range of items to see if they would float or sink.
- Students representing MWHPS at the SDSSA Basketball Round Robin with a positive attitude and team spirit.
- Our first week of swimming completed!
- Richmond playing exceptionally well!

Until next week,

Sharon

Sharon Reiss-Stone



Curriculum Update

We have had lots of great class segments this term at assembly. Well done everyone! Recently 1/2A and 1/2B presented. Check out the photos below...



1/2B recited the following poems at assembly and presented how these parts of a sentence can help their writing to be more detailed, engaging and interesting for the reader.

Nouns – Every name is called a noun, like a person, place a thing or a town

Adjective – An adjective describes a thing, like a magic wand or a diamond ring

Verb – a verb is an action, something done, to read, to write, to jump to run.



Some Common Japanese Phrases:	
Good morning:	おはようございます ohayoo gozaimasu
Hello/good afternoon:	こんにちは konnichiwa
Goodbye:	さようなら sayoonara
Thank you:	ありがとう arigatoo
You're welcome:	どういたしまして douitashimashite
I'm sorry:	ごめんなさい gomennasai
Excuse me:	すみません sumimasen
Stand up:	たってください tatte kudasai
Sit down:	すわってください suwatte kudasai
Look:	みてください mite kudasai
Listen:	きいてください kiite kudasai

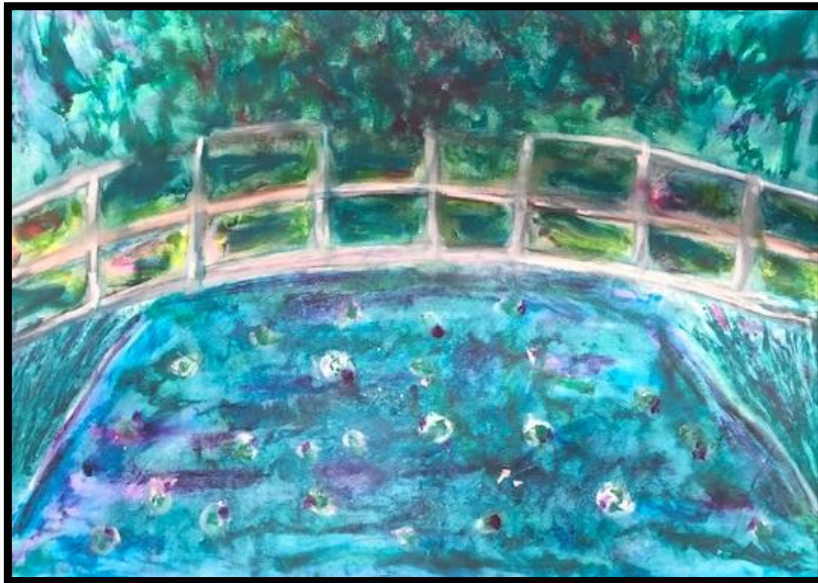


Our students are very lucky to have Japanese classes weekly with Sensei. Sensei takes the students through lessons involving the language, culture and history of Japan. Learning Japanese gives our students access to the language and cultures of Japan. Japanese is a phonetic language and all the sounds can be written with 46 letters called Hiragana.

Thanks

Carolyn

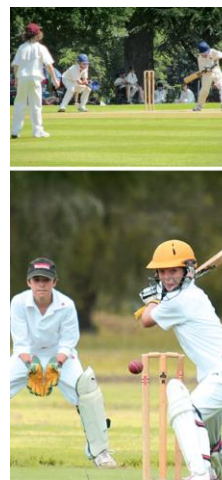
Carolyn Datson
Assistant Principal



This week's artist of the week is Cooper Stephens from 5/6H for his amazing use of oil pastel techniques in his Monet - inspired water lilies piece.

Furniture Free To Good Home!

*The double portables are being removed over the school holiday break. There is some furniture that we need to re-home. If there are any families who could use adjustable tables, moveable trolleys, desks etc please see the office. We need all furniture removed by **21st September.***



**COME AND PLAY
JUNIOR CRICKET!**

**Mount Waverley Mayfield
Junior Cricket Club**

Mayfield Park, Lewton Road, Mount Waverley
Melway Map 70 B4

Ages 8 - 13 (Boys and Girls)

Season fees **\$160**

Contact: Brett • mwmjcc@gmail.com • 0425 741 377
Rebecca • 0488 779 000

HOW TO REGISTER
Visit www.mwmjcc.org.au

LOST PROPERTY

There are numerous items of clothing, lunch boxes, and drink bottles in lost property.

If you have misplaced an item or lost something of value please see the office for further information.



9807 8120



9888 1921



Facebook.com/MtWaverleyHeightsPS



Mountwaverley.heights.ps@edumail.vic.gov.au



Mountwaverleyheightsps.vic.edu.au

S.D.S.S.A Basketball Round Robin

On Friday 7th September selected Year 5&6 students attended the S.D.S.S.A Basketball Round Robin at Nunawading Basketball Centre. We had a boys and girls team competing at this event and everyone tried their best and continued to improve throughout the day.

The boys' team had some success late in the day when they won their final game of the tournament. Their skills and teamwork was commendable and it was fair to say that they all were trying their best and enjoyed playing the games.

The girls' team had a great start, winning their first match and although they didn't win another match for the day, they never gave up and kept trying throughout all the games.

Well done to Mia J. and Tanna S. who were awarded the 'All Star Players' from Mount Waverley Heights, a great achievement!

Again congratulations to all students who participated in the round robin. I hope you all had fun and enjoyed the day. Thank you also to April and Caleb who assisted on the day and to the parents who came to watch and support the teams.

Mrs Black
P.E Coordinator



Extend OSHC at Mount Waverley Heights Primary School

Wow! What an awesome week we had here at Extend!

We have been focusing on well-being at Extend recently, and it has been great to see the children be so positive, respectful and have such an input into our conversations and activities. We are all friends at Extend and it has been great to watch the children grow and form amazing new friendships.

The highlight of our week, was our science activity: Ice-cream in a bag. The children said it was the best result they have had, out of all the times we have run the activity! This taught us the importance of experimentation and learning as we go! It was awesome to see the children have so much fun, and we have already had a request to do it again, though trial some different flavours. That will be a fun experiment for the future!

SLIME PARTY:

Last day of term we are having an awesome slime party. Throughout the term the children have been telling us about all different types of slime. We thought it would be fantastic to have an afternoon experimenting and having some sticky fun!

Community Links:

We have a hamper at our service collecting stationary, sports equipment, teaching materials (workbooks) and children's books to donate to a school in the Solomon Islands. Please feel free to come into Extend for more information or to drop off your donations, all are welcome.

Coming up next week:

Monday: Imagination Creation, Extend Olympics

Tuesday: Extend Play, Extend Olympics

Wednesday: Specialist Activity: Finish Painting Mugs, Extend Olympics

Thursday: Cooking: Corn Fritters, Soccer

Friday: SLIME PARTY!!

AND OUR EXTEND SUPER-STAR OF THE WEEK IS.....

Jada T Prep M

For: Always having a smile on your face and trying your best at everything you do. It is great to have such a positive and happy person at Extend and someone always ready to be a friend or help someone in need. Keep up the awesome work Jada.

From Caitlin and the kids at Extend. :)

****Spring Extend Squad - Fantabulous school holiday experiences ****

Extend's school holiday programs are a fantastic opportunity for your child to do fun and engaging activities with friends.

Book 14 days in advance to receive the early bird rate.

Bookings now open!

Find your local Extend Squad: extend.com.au



Announcing our Kids Club Competition Group Entry winners

Congratulations to everyone that entered their art mural into this year's Kids Club Competition. We were blown away by the hard work and effort put into each entry, and are delighted to announce our Runners Up and Winner of the 2018 Kids Club Competition Group Entry category.

And the winner is....Mount Waverley Heights Primary School



**Gilbert the Gecko's best friend,
Bunji the Gecko**

For NAIDOC week, the team created a hand printed Aboriginal flag and talked about paying their respect to the traditional owners of the land.

This gave MTWA the fantastic idea to create an Indigenous Gecko, as Gilbert's best friend. The children had so many creative ideas and incorporated a variety of dots, finger prints and a tribal face. The children's Gecko friend is called Bunji, meaning friend.

Congratulations to Caitlin and her team for winning a free incursion at After School Care!





BASKETBALL HOLIDAY CAMPS

GET READY FOR THE SUMMER SEASON!

Just started or thinking of playing next season? Join us at our **BEGINNER** holiday camps for an introduction to the basics and fundamental skills of the game in an enjoyable learning environment.
Monday 24th, Tuesday 25th & Thursday 27th September

Are you looking to prepare for the summer season? More experienced players are invited to attend our **ADVANCED** holiday camp for further skills coaching and guidance.
Wednesday 26th September

Camps are ideal for players 6 - 12 years. Building confidence whilst having fun!

4 BIG days of basketball in September
10am - 3pm **BYO Basketball & Lunch**
\$55 per day per participant
Waverley Basketball Stadium, Batesford Road, Chadstone
All ages and skills are invited to attend the beginner camp

Register ONLINE to book your spot
www.tinyurl.com/bballcamps
Enquiries please call 9095 6567

Basketball Victoria



EXTEND SQUAD
FANTABULOUS school holiday experiences!

Extend's school holiday programs are a fantastic opportunity for your child to do fun and engaging activities with friends.
Book 14 days in advance to receive the early bird rate.

Bookings now open!
Find your local Extend Squad: extend.com.au



Our netball club will soon be holding trials for our Rep level teams: 13/U, 15/U and 17/U; and also taking expressions of interest for our Premier League and Open Rep level teams.

Our teams compete at Waverley Night Netball Association. We are proud to offer Rep level teams, but still in a club environment. Players do not have to have previously played at St Michael's.

Contact Scott Toniazzo on repteams@stmichaelsnc.com.au



MONASH-
OAKLEIGH
COMMUNITY
SUPPORT AND
INFORMATION
SERVICE

Monash – Oakleigh Community Support Food Drive

MWHPS are collecting non-perishable food items (tinned food, pasta, cereals etc.) to support Monash-Oakleigh Community Support Service.

Donations can be left at the office till the end of term.

Thank-you!