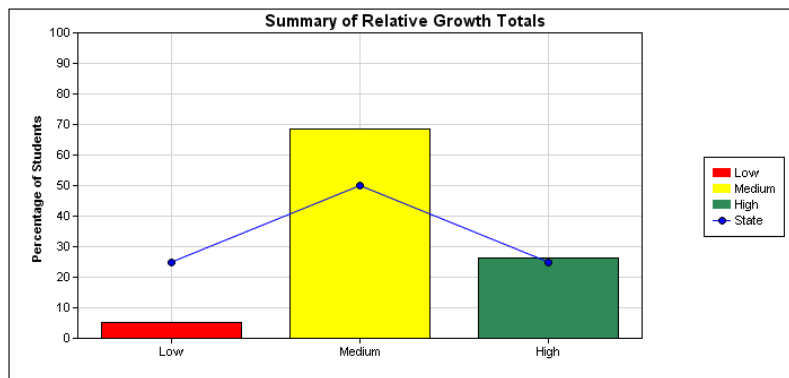


2016 NAPLAN DATA

The 2016 Naplan data has been released and we have much to celebrate. I have always been really proud of the Relative Growth Data of our school. It isn't dependent on the number of students sitting the test, so greater consistency of data collection can be achieved. The Relative Growth Data is where you can truly tell the success of a school. It measures the impact of the quality of teaching and learning practices. The data collected through NAPLAN compares a student's result in Year 3 to their result in Year 5. Schools want all students to make great growth. Even if a student is achieving well above level academically, we want to ensure that there is rigour and challenge in their learning so that students continue to progress at least 1.0 (level) per year. This year, almost all children (bar 1 to 2) across all areas tested made medium to high learning growth – which is quite extraordinary! This is the collective effort of all their teachers. In fact the progress made by the students in our school because of the exemplary teaching practices is fantastic. Most schools will show -25% making low, 50% making medium and 25% making high growth. The blue line marks the state. Across all areas, more of our students are making medium to high. Check out the results below.

Relative Growth Report - Graphical Summary for READING Year 5 - Class: All

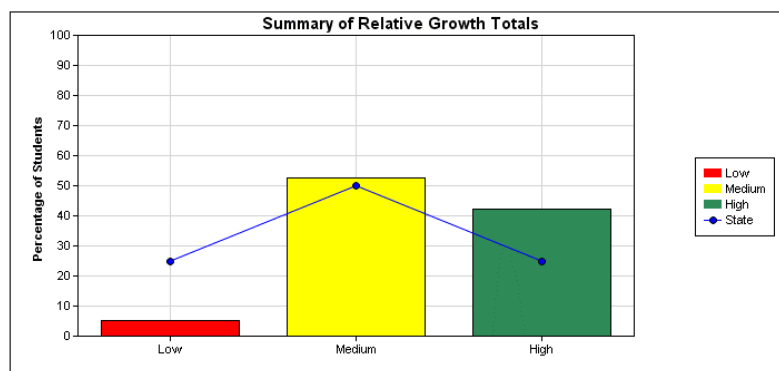
[View - Information about this report](#)



Reading: It is good that we are below the state in the low growth (red) column, as this means all but one student made medium to high growth.

Relative Growth Report - Graphical Summary for WRITING Year 5 - Class: All

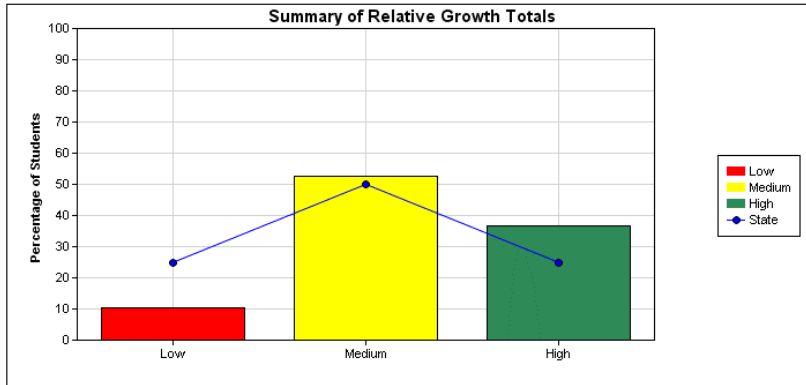
[View - Information about this report](#)



Writing: A large proportion of our students made high growth. Well above state expectations.

Relative Growth Report - Graphical Summary for SPELLING Year 5 - Class: All

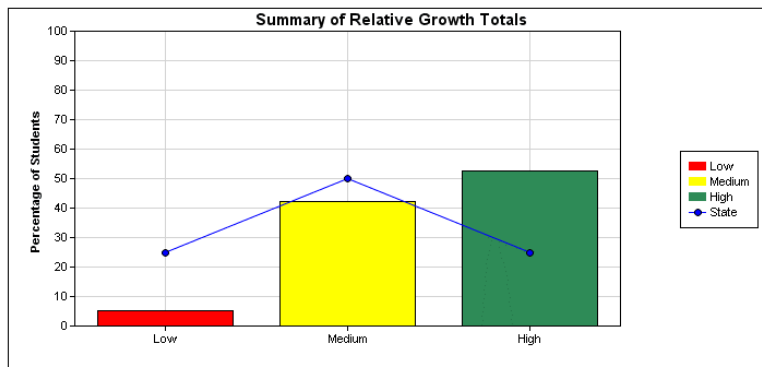
[View - Information about this report](#)



Spelling: Once again a large proportion of our students made high growth.

Relative Growth Report - Graphical Summary for NUMERACY Year 5 - Class: All

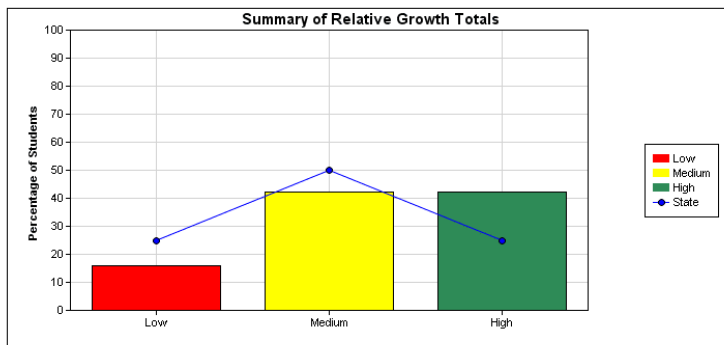
[View - Information about this report](#)



Numeracy: Most of our students made high growth. Well above state expectations.

Relative Growth Report - Graphical Summary for GRAMMAR & PUNCTUATION Year 5 - Class: All

[View - Information about this report](#)



Grammar and Punctuation: An equal number of students made mid to high growth.